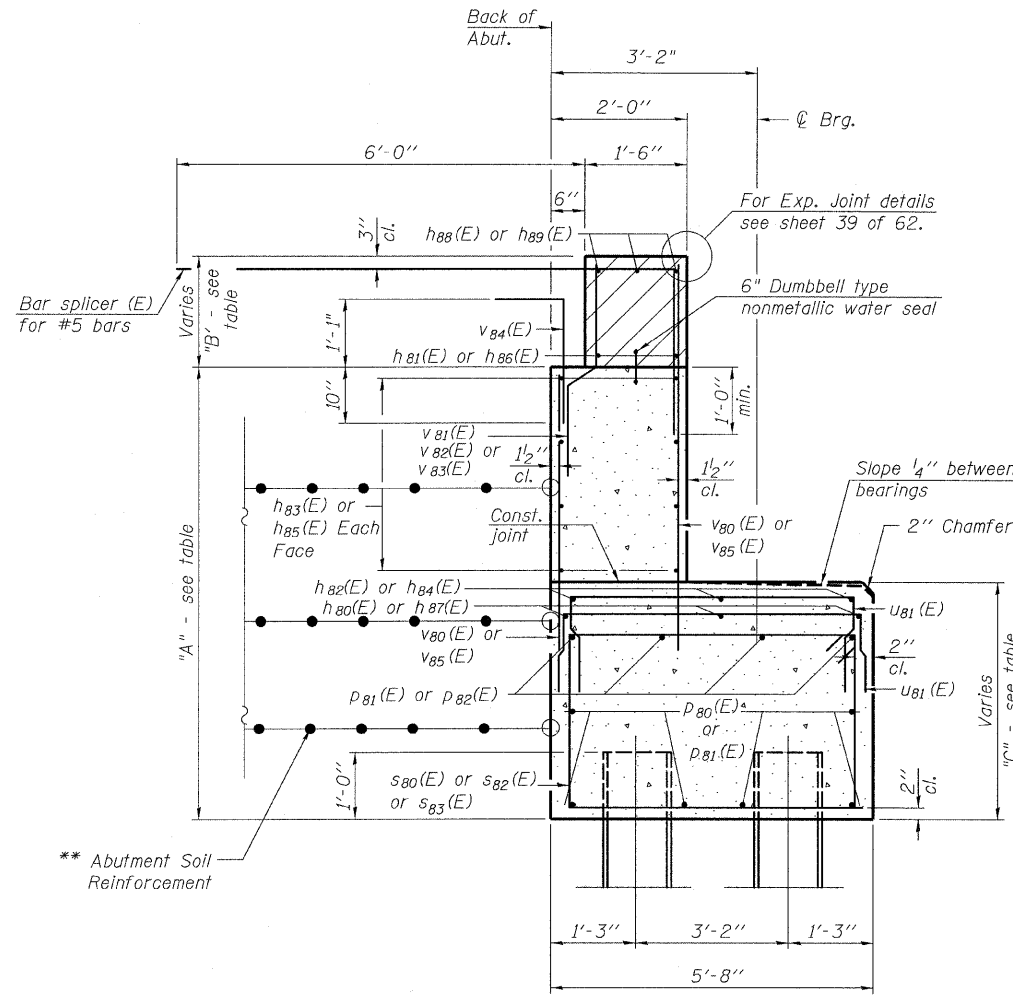


STATE OF ILLINOIS
DEPARTMENT OF TRANSPORTATION

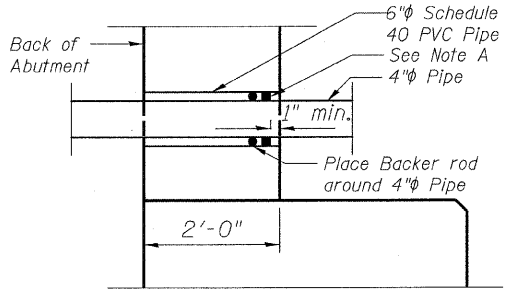
WEST ABUTMENT
BILL OF MATERIAL



SEC. THRU ABUT.

Note A:
Non-staining gray one component non-sag elastomeric gun grade polyurethane sealant meeting the requirements of ASTM C-920, Type S, Grade NS, Class 25 rod.

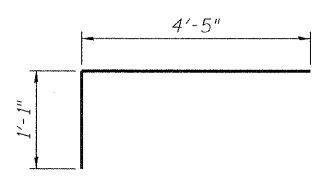
**The M.S.E. wall supplier shall design the abutment soil reinforcement to resist a horizontal force of 2 kips/ft. Contractor shall coordinate abutment construction with construction of MSE retaining wall.



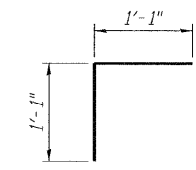
DETAIL B

Shown for 6" pipe.
Use 10" Schedule 40 PVC pipe for 8" drainage pipe.

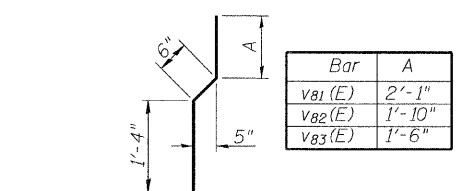
Note: Backer Rod, 6" PVC Pipe & sealant shall be included in the cost of Concrete Structures.



BAR b103 (E)



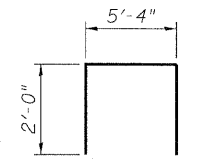
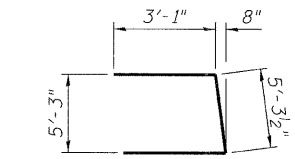
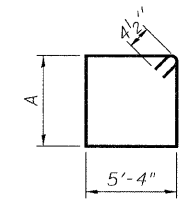
BAR v84 (E)



BAR v81 (E), v82 (E) & v83 (E)

Bar	A
s80 (E)	3'-2"
s82 (E)	3'-5"
s83 (E)	3'-9"

BARS s80 (E), s82 (E) & s83 (E) BAR u80 (E)



BARS u81 (E)

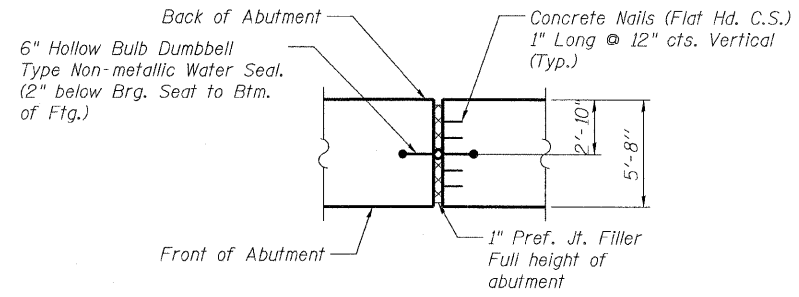
Location	A	B	C
C-D Road A	6'-9 ³ / ₄ "	1'-4" to 1'-8 ¹ / ₂ "	4'-0 ⁵ / ₈ " to 4'-4"
NB I-57	6'-4 ³ / ₄ "	1'-4" to 2'-0 ⁵ / ₈ "	3'-7 ⁵ / ₈ " to 4'-3 ³ / ₈ "
SB I-57	6'-3"	1'-4" to 2'-3"	3'-6" to 4'-4"

Bar	No.	Size	Length	Shape
b103 (E)	8	#6	6'-4"	Γ
h80 (E)	6	#5	29'-9"	—
h81 (E)	8	#6	39'-9"	—
h82 (E)	6	#5	18'-6"	—
h83 (E)	32	#5	39'-10"	—
h84 (E)	3	#5	18'-2"	—
h85 (E)	16	#5	22'-9"	—
h86 (E)	4	#6	22'-8"	—
h87 (E)	3	#5	43'-7"	—
h88 (E)	6	#6	23'-9"	—
h89 (E)	12	#6	40'-1"	—
p80 (E)	24	#7	40'-6"	—
p81 (E)	10	#7	42'-3"	—
p82 (E)	16	#7	40'-10"	—
s80 (E)	132	#4	17'-9"	□
s82 (E)	131	#4	18'-3"	□
s83 (E)	72	#4	18'-11"	□
u80 (E)	24	#6	8'-5"	U
u81 (E)	158	#4	7'-4"	U
v80 (E)	154	#5	5'-9"	—
v81 (E)	77	#4	3'-11"	—
v82 (E)	77	#4	3'-8"	—
v83 (E)	44	#4	3'-4"	—
v84 (E)	198	#5	3'-10"	Γ
v85 (E)	242	#5	5'-11"	—
Structure Excavation		Cu. Yd.	4,010	
Concrete Structures		Cu. Yd.	206.1	
Reinforcement Bars, Epoxy Coated		Pound	16,870	
Furnishing Steel Piles, HP12x53		Foot	2,040	①
Pile Shoes		Each	52	
Driving Piles		Foot	2,040	①
Test Pile Steel HP12x53		Each	1	
Concrete Sealer		Sq. Ft.	1,650	

For details of Bar Splicers, see sheet 55 of 62.
For details of piles, see sheet 56 of 62.

PILE DATA

Type: HP12x53 with Piles Shoes
Nominal Required Bearing: 219 kips
Factored Resistance Available: 230 kips
Est. Length: 39.71
No. Production Piles: 51
No. Test Piles: 1



SECTION A-A

Cost of Water Seal included in the cost of Concrete Structures.

WEST ABUTMENT DETAILS
S.N. 016-1252

TYLIN INTERNATIONAL	DESIGNED - DY	REVISIONS		SHEET NO. 46	F.A.I. RTE.	SECTION	COUNTY	TOTAL SHEETS	SHEET NO.						
	CHECKED - AD,LS	NAME	DATE							57	1414.2B	COOK	516	359	
	DRAWN - DY,EI									62 SHEETS	CONTRACT NO. 60J27				
	CHECKED - LS,SP,PDF										FED. ROAD DIST. NO. 1 ILLINOIS FED. AID PROJECT				
	DATE - 03/18/10	Δ REVISED								05/24/10					

P:\60254057-294\STRUCTURAL\1-57-OVER-RAMP-BN.rvt, submitted: 03-17-2010 10:16:25, 60J27-046-W-ABUT-DT.dgn, 5/21/2010 2:22:45 PM