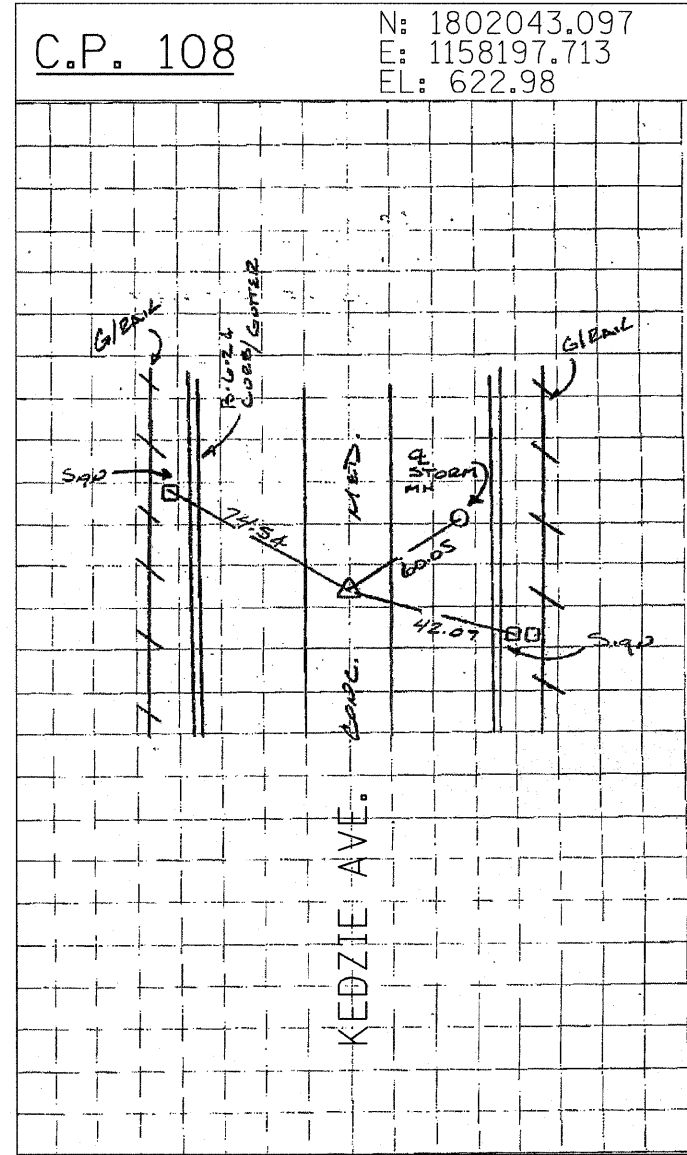
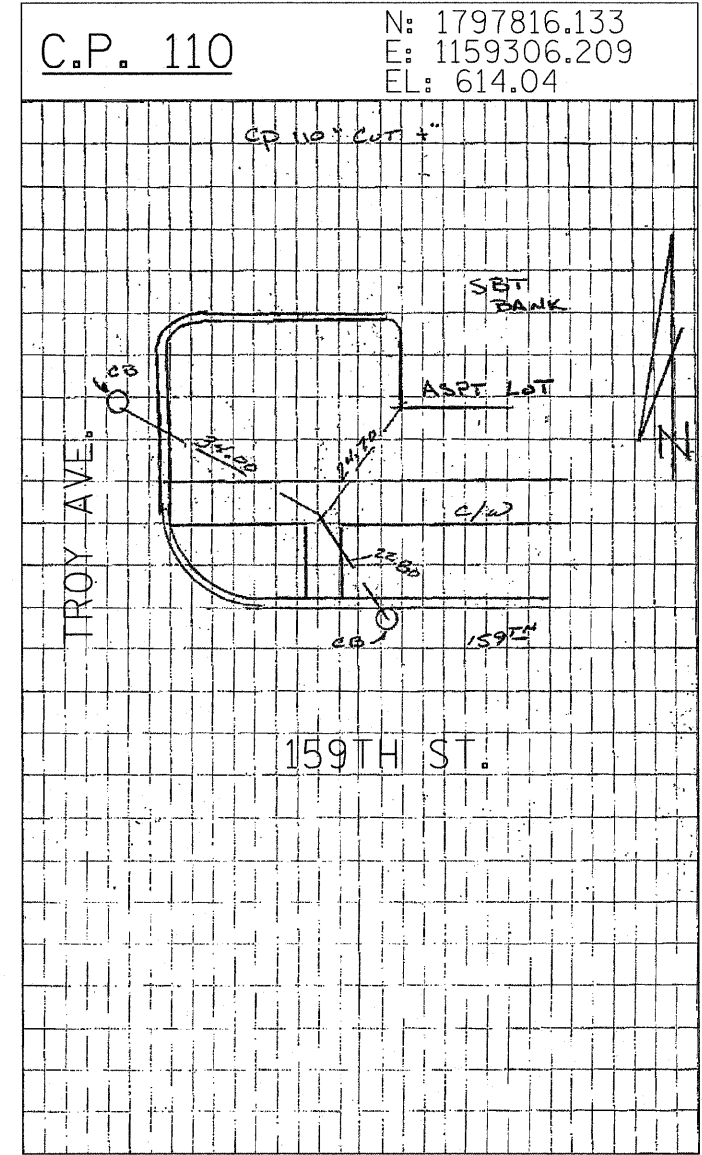


SET MAG NAIL IN NORTHERLY SHOULDER OF WESTBOUND 159TH ST. AND SOUTHBOUND I-57 TRIMUS ± 200' WESTERLY OF C I-57



SET CROSS CUT IN CONCRETE MEDIAN WITH RUMBLE STRIPS ± C KEDZIE AVE. ± 350' NORTH OF KEDZIE / I-57 BRIDGE C



CROSS CUT IN SIDEWALK AT NORTH EAST CORNER OF TROY AVENUE AND 159TH STREET.

<b>TYLIN INTERNATIONAL</b>	USER NAME =	DESIGNED - CAC	REVISED -
	PLOT SCALE =	DRAWN - CAC	REVISED -
	PLOT DATE =	CHECKED - JDF	REVISED -
		DATE - 3/18/2010	REVISED -

**STATE OF ILLINOIS  
 DEPARTMENT OF TRANSPORTATION**

**I-57 AT I-294 INTERCHANGE PROJECT  
 SURVEY TIES FOR CONTROL POINTS**

SCALE: N.T.S.    SHEET NO. 8 OF 10 SHEETS    STA. 425+00 TO STA. 3118+34.77

F.A.I. RTE.	SECTION	COUNTY	TOTAL SHEETS	SHEET NO.
57	1414.2B	COOK	516	18A
FED. ROAD DIST. NO.			ILLINOIS FED. AID PROJECT	
			CONTRACT NO. 60J27	