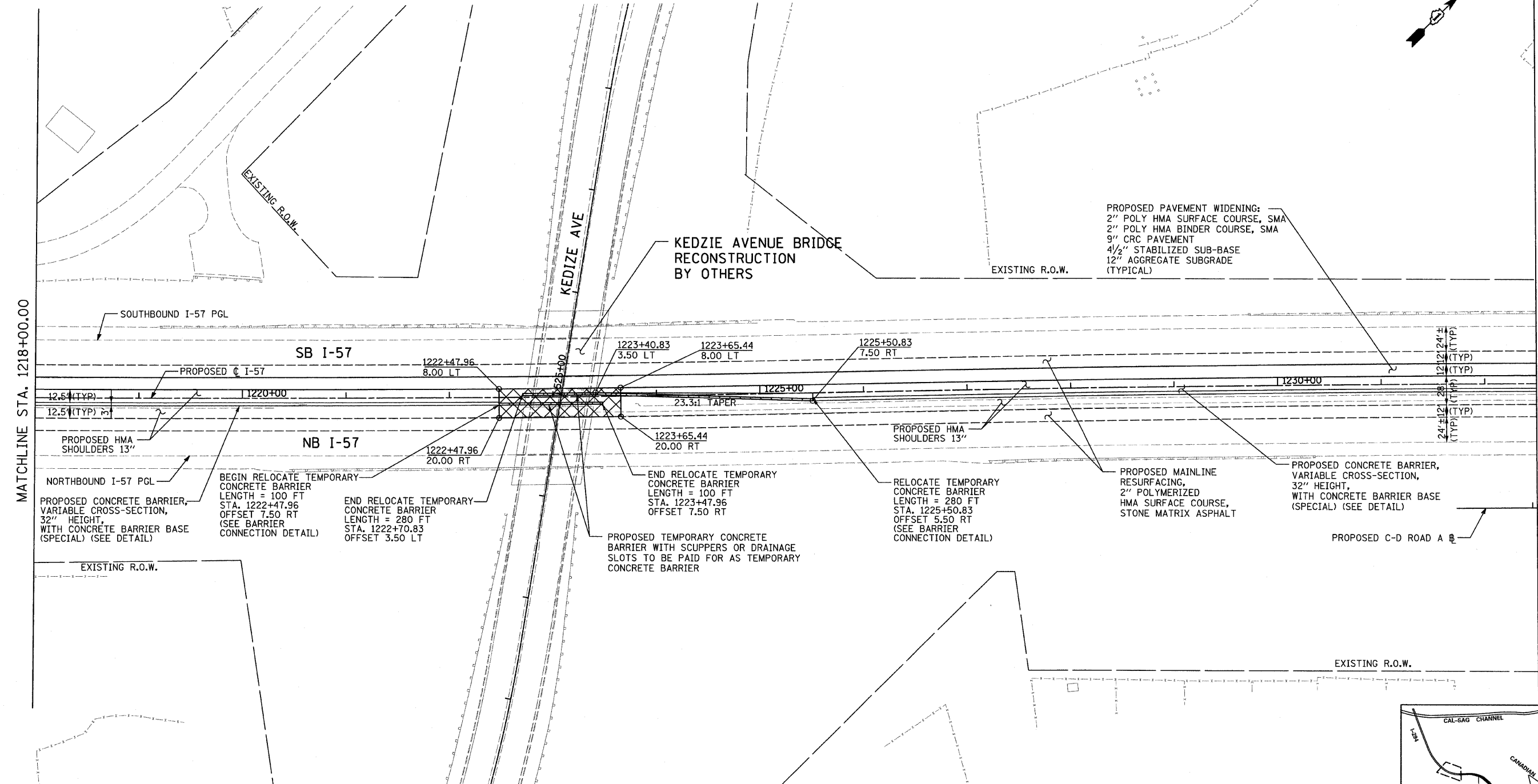
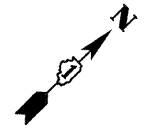


P:\602540\57-294\road\PI157_BR\PI_PP_SHT05.dgn



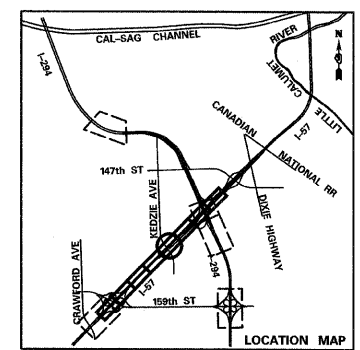
MATCHLINE STA. 1218+00.00

MATCHLINE STA. 1232+50.00

- LEGEND:**
- TEMPORARY PAVEMENT (TO REMAIN)
 - RELOCATED TEMPORARY CONCRETE BARRIER (TO REMAIN)
 - RELOCATED IMPACT ATTENUATOR (NON-REDIRECTIVE) DESIGN CRITERIA TEST LEVEL 3 (TO REMAIN)

NOTES:

PGL FOR NORTHBOUND AND SOUTHBOUND PROFILES IS LOCATED 56' RT OR LT, RESPECTIVELY, FROM I-57 C.



SCALE: 1" = 50'-0"

TYLIN INTERNATIONAL	USER NAME =	DESIGNED - CAC	REVISED - 4/29/2010	STATE OF ILLINOIS DEPARTMENT OF TRANSPORTATION	I-57 AT I-294 INTERCHANGE PROJECT PROPOSED PLANS ALONG I-57			F.A.I. RTE.	SECTION	COUNTY	TOTAL SHEETS	SHEET NO.
	PLOT SCALE =	DRAWN - CAC	REVISED -		57	1414.2B	COOK	516	45			
	PLOT DATE =	CHECKED - JDF	REVISED -		CONTRACT NO. 60J27							
		DATE - 3/18/2010	REVISED -		FED. ROAD DIST. NO. ILLINOIS FED. AID PROJECT							
				SCALE: 1"=50' SHEET NO. 5 OF 8 SHEETS STA. 1218+00 TO STA. 1232+50								