

MATCHLINE STA. 1276+00.00

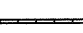

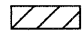
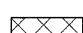

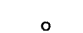
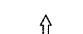
PALMER AVE.

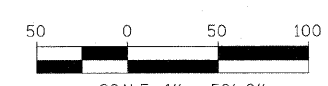
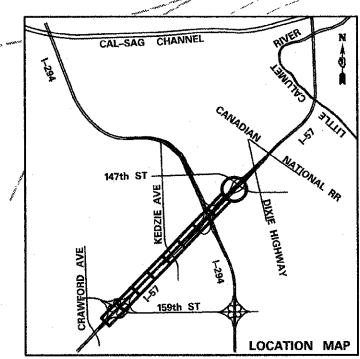
147TH STREET

147TH STREET

PALMER AVE.

**LEGEND:**

-  TEMPORARY CONCRETE BARRIER
-  TRAFFIC LANE
-  WORK ZONE
-  TEMPORARY PAVEMENT (INTERSTATE)
-  BARRICADE, TYPE III
-  DRUM WITH MONO-DIRECTIONAL STEADY BURNING LIGHT
-  ARROW BOARD



<b>TYLIN INTERNATIONAL</b>	USER NAME =	DESIGNED - DM	REVISED -	<b>STATE OF ILLINOIS DEPARTMENT OF TRANSPORTATION</b>	<b>I-57 AT I-294 INTERCHANGE PROJECT MAINTENANCE OF TRAFFIC - I-57 STAGE 2</b>			F.A.I. RTE. =	SECTION =	COUNTY =	TOTAL SHEETS =	SHEET NO. =
	PLOT SCALE =	DRAWN - DM	REVISED -		57	1414.2B	COOK	516	110			
	PLOT DATE =	CHECKED - JPM	REVISED -		SCALE: 1"=50'    SHEET NO. 9 OF 9 SHEETS    STA. 1276+00 TO STA. 1290+50			CONTRACT NO. 60J27				
		DATE - 3/18/2010	REVISED -		FED. ROAD DIST. NO.    ILLINOIS FED. AID PROJECT							