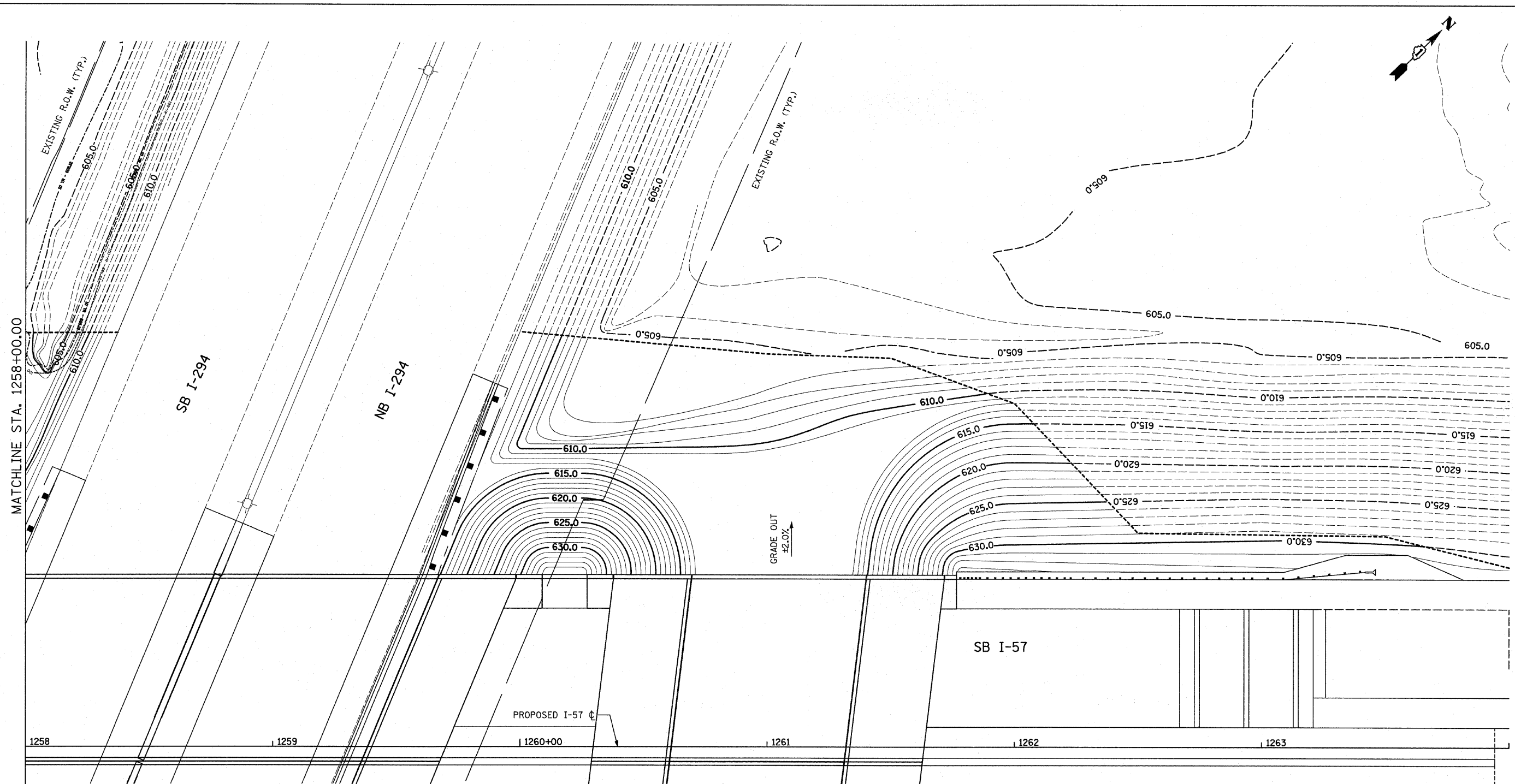
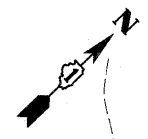


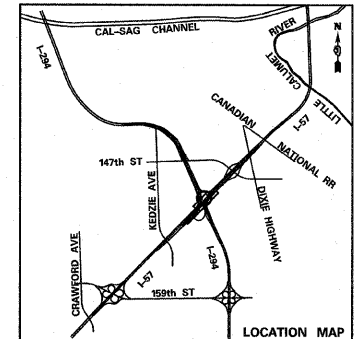
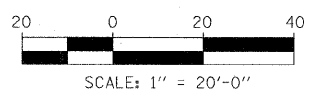
P:\602540\57-294\road\p1_157_br\PI.GP_SHT07.dgn

5:03:42 PM 3/17/2010



LEGEND:

- | | | | |
|-----------------|---------------------------------------------------------------------|-----------|----------------------------------------------------------------------|
| 615.0 - - - - - | EXISTING MAJOR ELEVATIONS AND MAJOR CONTOUR LINES AT 5 FT INTERVALS | 615.0 ——— | PROPOSED MAJOR ELEVATIONS AND MAJOR CONTOUR LINES AT 5 FT INTERVALS |
| - - - - - | EXISTING MINOR CONTOUR LINES AT 1 FT INTERVALS | ————— | PROPOSED MINOR CONTOUR LINES AT 1 FT INTERVALS |
| | TEMPORARY PAVEMENT (SEE MOT AND CROSS OVER DETAILS SHEETS) | - - - - - | PROPOSED GRADING LIMITS (AS DEPICTED IN THE PROPOSED CROSS SECTIONS) |
| | PROPOSED DITCH (SEE PROPOSED CROSS SECTION SHEETS) | | |



TYLIN INTERNATIONAL

USER NAME =	DESIGNED - JDF	REVISED -
PLOT SCALE =	DRAWN - JDF	REVISED -
PLOT DATE =	CHECKED - JPM	REVISED -
	DATE - 3/18/2010	REVISED -

**STATE OF ILLINOIS
DEPARTMENT OF TRANSPORTATION**

**I-57 AT I-294 INTERCHANGE PROJECT
PROPOSED GRADING PLAN ALONG SB I-57**

SCALE: 1"=20' SHEET NO. 7 OF 7 SHEETS STA. 1258+00 TO STA. 1264+00

F.A.I. RTE. 57	SECTION 1414.2B	COUNTY COOK	TOTAL SHEETS 516	SHEET NO. 178
CONTRACT NO. 60J27				
FED. ROAD DIST. NO. ILLINOIS FED. AID PROJECT				