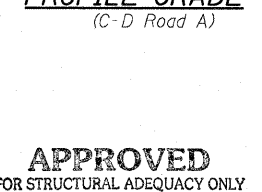
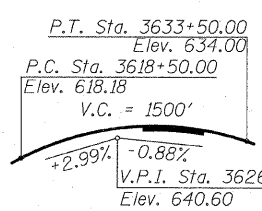
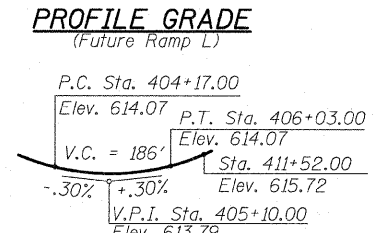
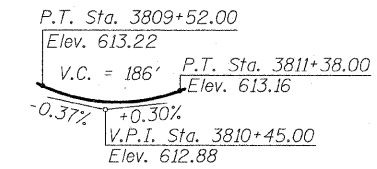
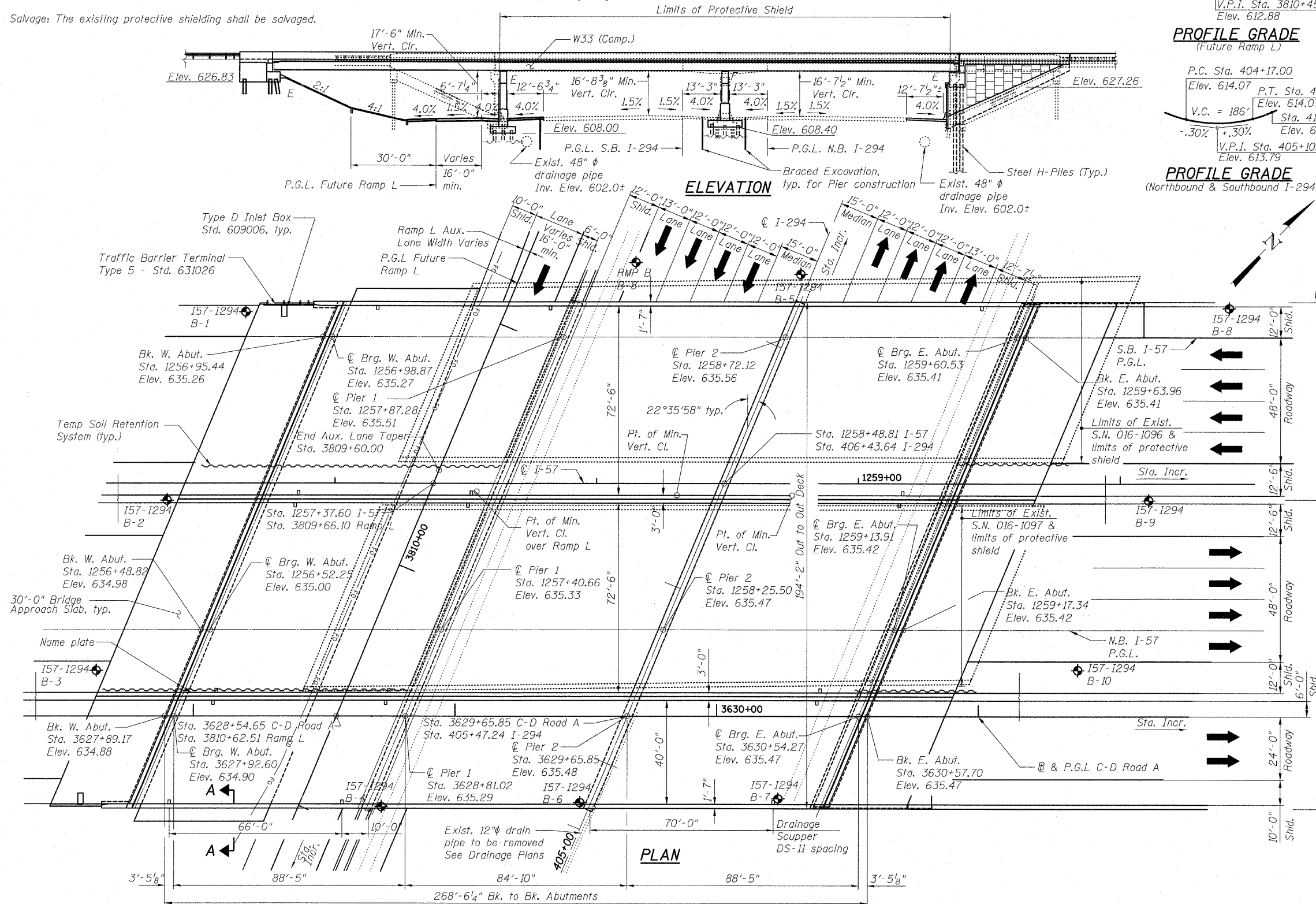


STATE OF ILLINOIS
DEPARTMENT OF TRANSPORTATION

Bench Mark: Iron rod with yellow cap set 7'± off west side of N.B. shoulder at Sta. 400+00. Elev. 610.79

Existing Structures: S.N. 016-1096 S.B. and 016-1097 N.B. built in 1968 as F.A.I. Rte. Section 068-1414.2-C.F. at Sta. 252+48.70. Each structure consists of a reinforced concrete deck supported by two span continuous steel welded plate girders, with an overall length of 254'-10 3/8" and width varying from 68'-9 9/16" to 70'-9 9/16". The spans are supported by a reinforced concrete pier and vaulted abutments on steel piles. Traffic to be maintained by stage construction.

Salvage: The existing protective shielding shall be salvaged.



DESIGN SPECIFICATIONS
2007 AASHTO LRFD Bridge Design Specifications, 4th Edition with 2008 & 2009 Interims

LOADING HL-93
Allow 50#/sq. ft. for future wearing surface.

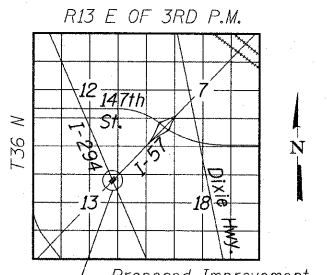
DESIGN STRESSES
FIELD UNITS
f'c = 3,500 psi
fy = 60,000 psi (Reinforcement)
fy = 50,000 psi (M270 Grade 50)

SEISMIC DATA
Seismic Performance Zone (SPZ) = 1
Design Spectral Acceleration at 1.0 sec. (SD1) = 0.091
Design Spectral Acceleration at 0.2 sec. (SD5) = 0.155
Soil Site Class = D

APPROVED
FOR STRUCTURAL ADEQUACY ONLY
Ralph E. Anderson (TS)
ENGINEER OF BRIDGES AND STRUCTURES



Signed *SP*
Spiros Pantazis, S.E. II Lic. No. 081-006448
Expires 11-30-2010
Date 3/18/10



GENERAL PLAN & ELEVATION
I-57 OVER I-294
F.A.I. RTE. 57 SEC. 1414.2B
COOK COUNTY
STATION 1258+48.81
STRUCTURE NO. 016-1251

TYLIN INTERNATIONAL

DESIGNED - SP	REVISIONS	
CHECKED - SP, PDF	NAME	DATE
DRAWN - PK		
CHECKED - SP, PDF		
DATE - 03/18/10		

SHEET NO. 1	F.A.I. RTE.	SECTION	COUNTY	TOTAL SHEETS	SHEET NO.
	57	1414.2B	COOK	516	246
68 SHEETS	CONTRACT NO. 60J27				
	FED. ROAD DIST. NO. 1 ILLINOIS FED. AID PROJECT				

P:\60254067-294\STRUCTURAL\I-57 OVER I-294\0161251-60J27-001-GPE.dgn 3/17/2010