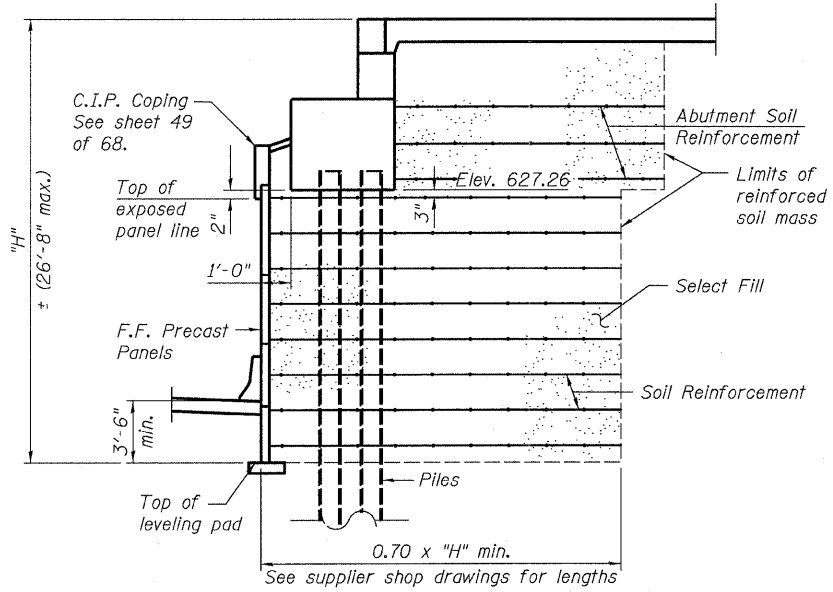
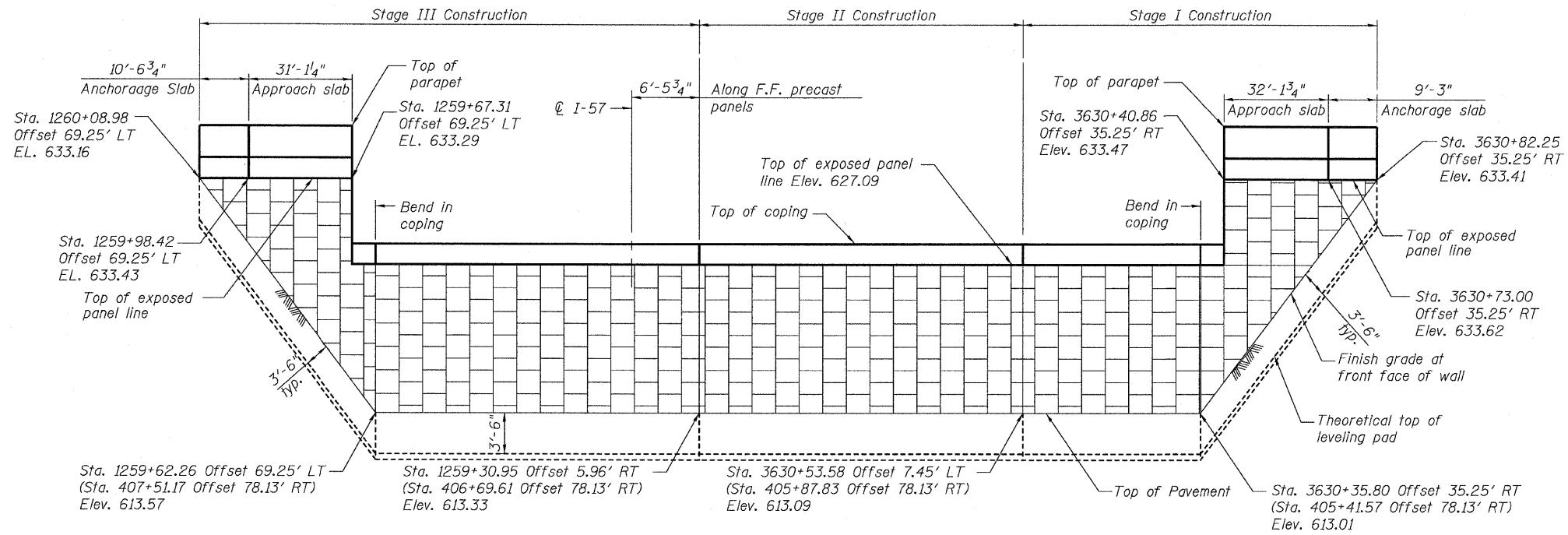


STATE OF ILLINOIS  
DEPARTMENT OF TRANSPORTATION



**SECTION THRU ABUTMENT**

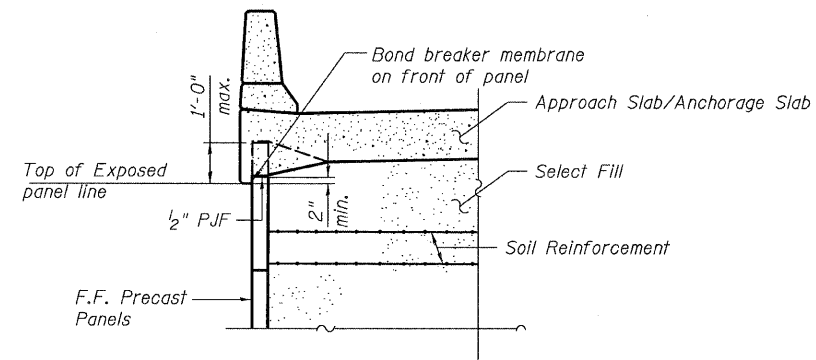
**NOTES**

The MSE wall supplier shall design the abutment soil reinforcement to resist a horizontal force of 1.83 kips/ft of abutment.

Piles shall be driven prior to placement of the reinforced select fill and coated with bitumen from the bottom of the select fill to 1" above the base of abutment. The cost of the bitumen coating shall be included with the cost of furnishing piles.

**EAST ABUTMENT WALL**

Developed elevation along front face



**SECTION THRU WINGWALLS**

The M.S.E. wall supplier's internal stability design shall account for the slabs bearing pressure surcharge of 1.0 ksf.

**NOTES**

Offsets are to Front Face of precast panels.

For coping details see sheet 49 of 68.

For anchorage slab details, see sheet 35 of 68.

**MECHANICALLY STABILIZED  
EARTH RETAINING WALL  
STRUCTURE NO. 016-1251**

<b>TYLIN INTERNATIONAL</b>	DESIGNED - JA	REVISIONS		SHEET NO. 48	F.A.I RTE. 57	SECTION 1414.2B	COUNTY COOK	TOTAL SHEETS 516	SHEET NO. 293
	CHECKED - SP, PDF	NAME	DATE						
	DRAWN - JA								
	CHECKED - SP, PDF								
	DATE - 03/18/10		04/29/10	68 SHEETS	CONTRACT NO. 60J27				
					FED. ROAD DIST. NO. 1 ILLINOIS FED. AID PROJECT				