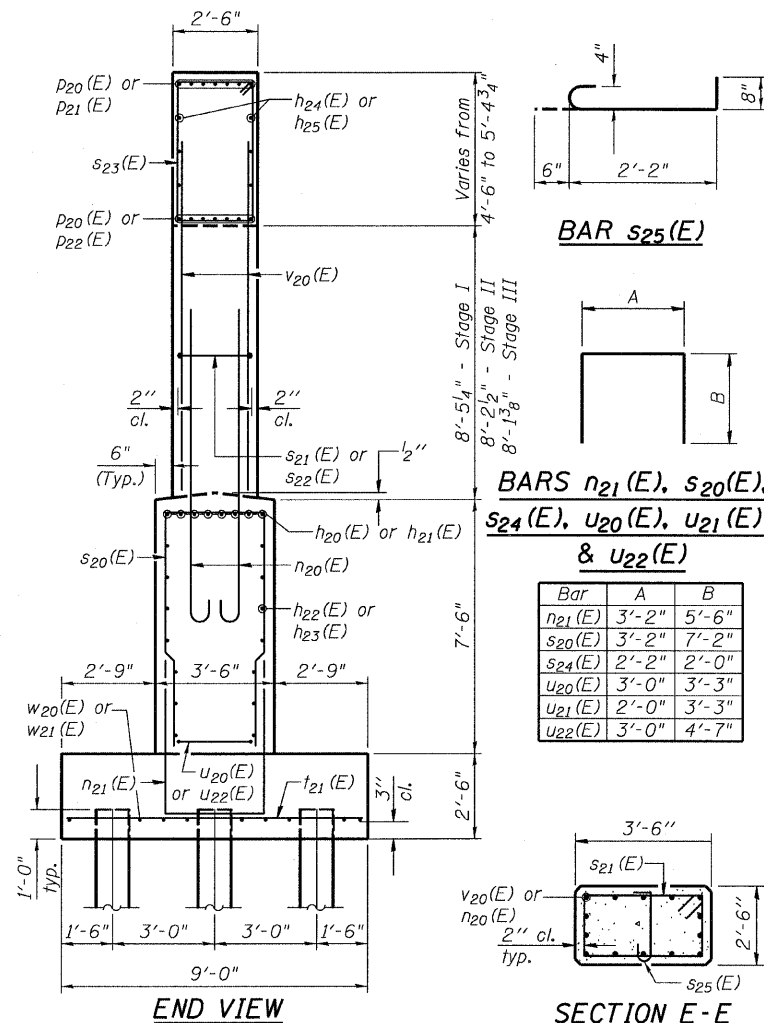


PIER 1 - BILL OF MATERIAL

PIER 2 - BILL OF MATERIAL



Bar	No.	Size	Length	Shape
h20(E)	8	#8	46'-2"	
h21(E)	32	#8	44'-10"	
h22(E)	14	#5	46'-2"	
h23(E)	56	#5	42'-8"	
h24(E)	6	#5	46'-0"	
h25(E)	24	#5	41'-10"	
h26(E)	4	#5	13'-0"	
h27(E)	4	#5	40'-2"	
h28(E)	8	#5	32'-1"	
h29(E)	4	#5	19'-11"	

n20(E)	224	#8	11'-8"	
n21(E)	315	#5	14'-2"	

p20(E)	14	#8	46'-0"	
p21(E)	28	#9	45'-1"	
p22(E)	12	#9	51'-8"	
p23(E)	12	#9	37'-6"	
p27(E)	14	#9	18'-8"	
p28(E)	28	#9	18'-6"	

s20(E)	315	#5	17'-6"	
s21(E)	126	#4	11'-5"	
s22(E)	36	#4	10'-3"	
s23(E)	303	#5	13'-7"	
s24(E)	123	#4	6'-2"	
s25(E)	144	#4	3'-4"	

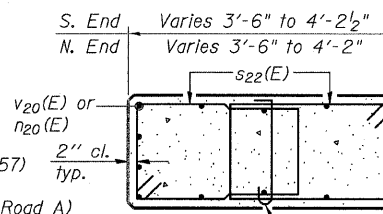
t21(E)	277	#8	8'-9"	
u20(E)	8	#5	9'-6"	
u21(E)	30	#5	8'-6"	
u22(E)	8	#5	12'-2"	

v20(E)	224	#8	12'-3"	
w20(E)	18	#7	27'-5"	
w21(E)	54	#7	31'-9"	

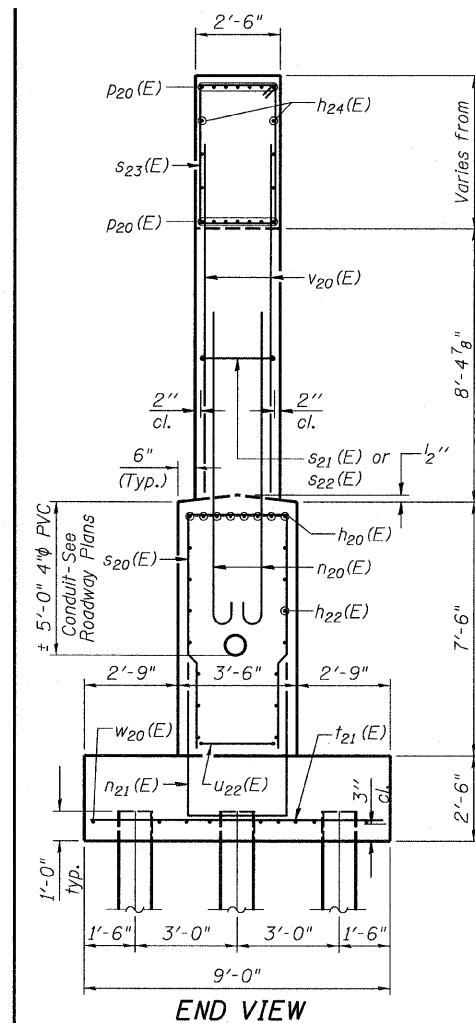
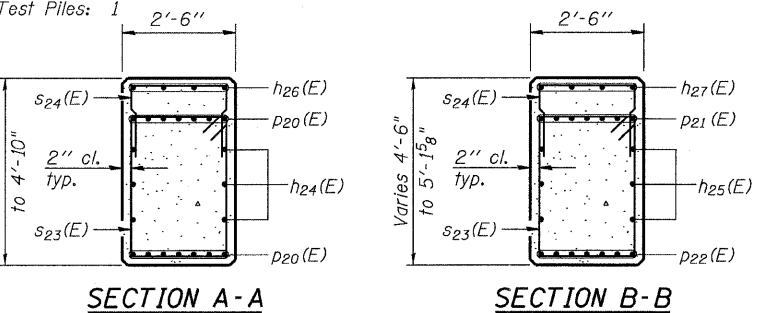
Structure Excavation	Cu. Yd.	570
Concrete Structures	Cu. Yd.	519.7
Reinforcement Bars, Epoxy Coated	Pound	64,660
Furnishing Steel Piles, HP12x53	Foot	3,601
Driving Piles	Foot	3,601
Test Pile Steel HP12x53	Each	1

PILE DATA

Type: HP 12x53 with Pile Shoes
 Nominal Req. Bearing: 378 kips (SB I-57)
 Factored Resistance Available: 208 kips (SB I-57)
 Est. Length: 32 ft (SB I-57)
 Nominal Req. Bearing: 350 kips (NB I-57, C-D Road A)
 Factored Resistance Available: 193 kips (NB I-57, C-D Road A)
 Est. Length: 37 ft (NB I-57, C-D Road A)
 No. Production Piles: 103
 No. Test Piles: 1

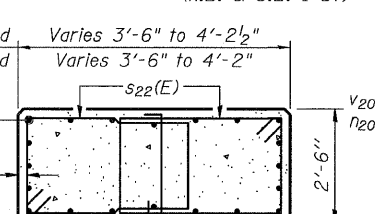


ANCHOR BOLT LAYOUT

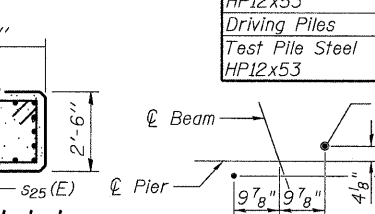
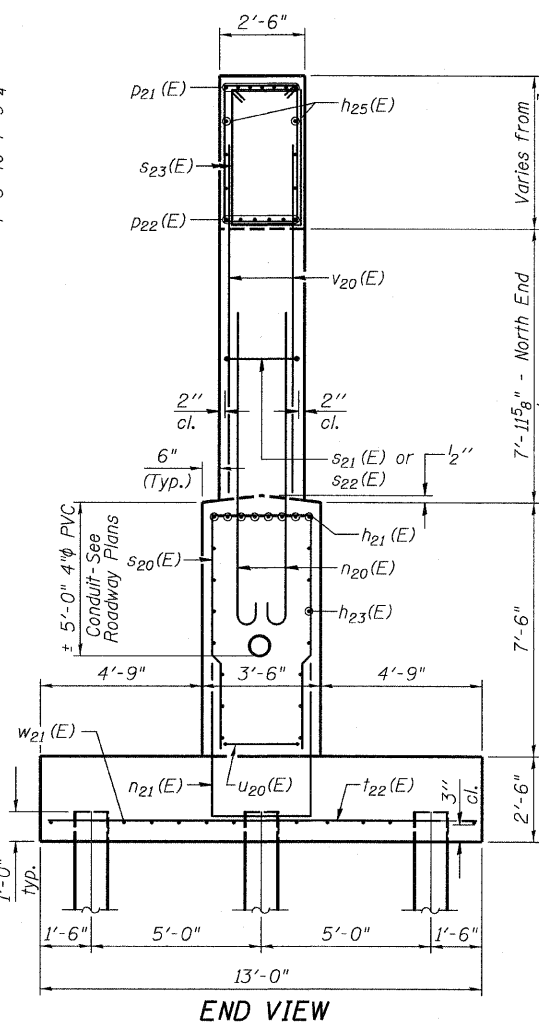
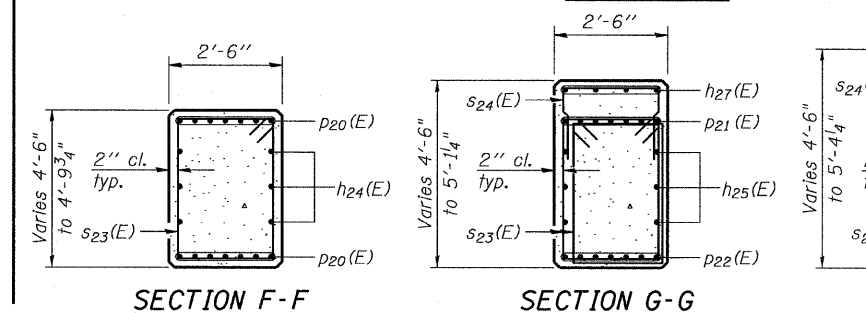


PILE DATA

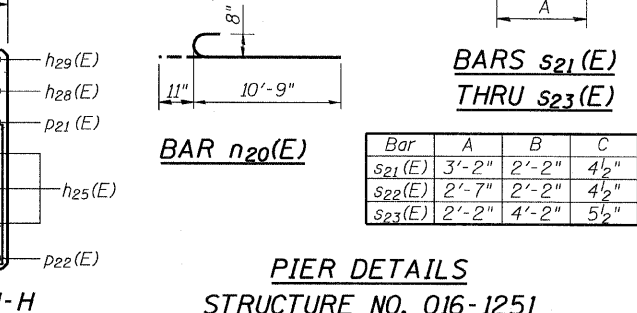
Type: HP 12x53 with Pile Shoes
 Nominal Required Bearing: 394 kips
 Factored Resistance Available: 217 kips
 Est. Length: 30 ft
 No. Production Piles: 135
 No. Test Piles: 1



ANCHOR BOLT LAYOUT



ANCHOR BOLT LAYOUT



Bar	No.	Size	Length	Shape
h20(E)	8	#8	46'-2"	
h21(E)	32	#8	44'-10"	
h22(E)	14	#5	46'-2"	
h23(E)	56	#5	42'-8"	
h24(E)	6	#5	46'-0"	
h25(E)	24	#5	41'-10"	
h27(E)	4	#5	40'-2"	
h28(E)	8	#5	32'-1"	
h29(E)	4	#5	19'-11"	

n20(E)	320	#8	11'-8"	
n21(E)	315	#5	14'-2"	

p20(E)	14	#8	46'-0"	
p21(E)	28	#9	45'-1"	
p22(E)	12	#9	51'-8"	
p23(E)	12	#9	37'-6"	
p27(E)	14	#9	18'-8"	
p28(E)	28	#9	18'-6"	

s20(E)	315	#5	17'-6"	
s21(E)	126	#4	11'-5"	
s22(E)	36	#4	10'-3"	
s23(E)	383	#5	13'-7"	
s24(E)	123	#4	6'-2"	
s25(E)	144	#4	3'-4"	

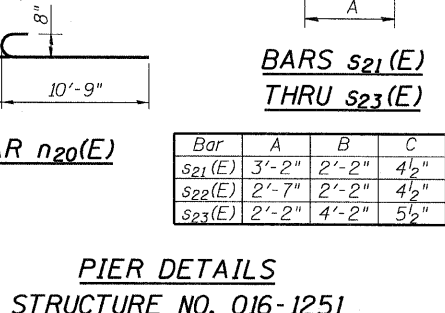
t21(E)	56	#8	8'-9"	
t22(E)	191	#8	12'-9"	
u20(E)	8	#5	9'-6"	
u21(E)	30	#5	8'-6"	
u22(E)	8	#5	12'-2"	

v20(E)	320	#8	12'-3"	
w20(E)	18	#7	27'-5"	
w21(E)	66	#7	31'-9"	

Structure Excavation	Cu. Yd.	704
Concrete Structures	Cu. Yd.	579.8
Reinforcement Bars, Epoxy Coated	Pound	73,990
Furnishing Steel Piles, HP12x53	Foot	4,050
Driving Piles	Foot	4,050
Test Pile Steel HP12x53	Each	1

PILE DATA

Type: HP 12x53 with Pile Shoes
 Nominal Req. Bearing: 378 kips (SB I-57)
 Factored Resistance Available: 208 kips (SB I-57)
 Est. Length: 32 ft (SB I-57)
 Nominal Req. Bearing: 350 kips (NB I-57, C-D Road A)
 Factored Resistance Available: 193 kips (NB I-57, C-D Road A)
 Est. Length: 37 ft (NB I-57, C-D Road A)
 No. Production Piles: 103
 No. Test Piles: 1



PIER DETAILS STRUCTURE NO. 016-1251

TYLIN INTERNATIONAL	DESIGNED - PK	REVISIONS		SHEET NO. 54	F.A.I. RTE. 57	SECTION 1414.2B	COUNTY COOK	TOTAL SHEETS 516	SHEET NO. 299
	CHECKED - SP,	NAME	DATE						
	DRAWN - PK								
	CHECKED - SP, PDF			CONTRACT NO. 60J27					
	DATE - 03/18/10	04/29/10		FED. ROAD DIST. NO. 1 ILLINOIS FED. AID PROJECT					

4/28/2010 P:\602540(57-294)\STRUCTURAL\I-57 OVER I294\0161251-60J27-054-PIER-DTL.dgn