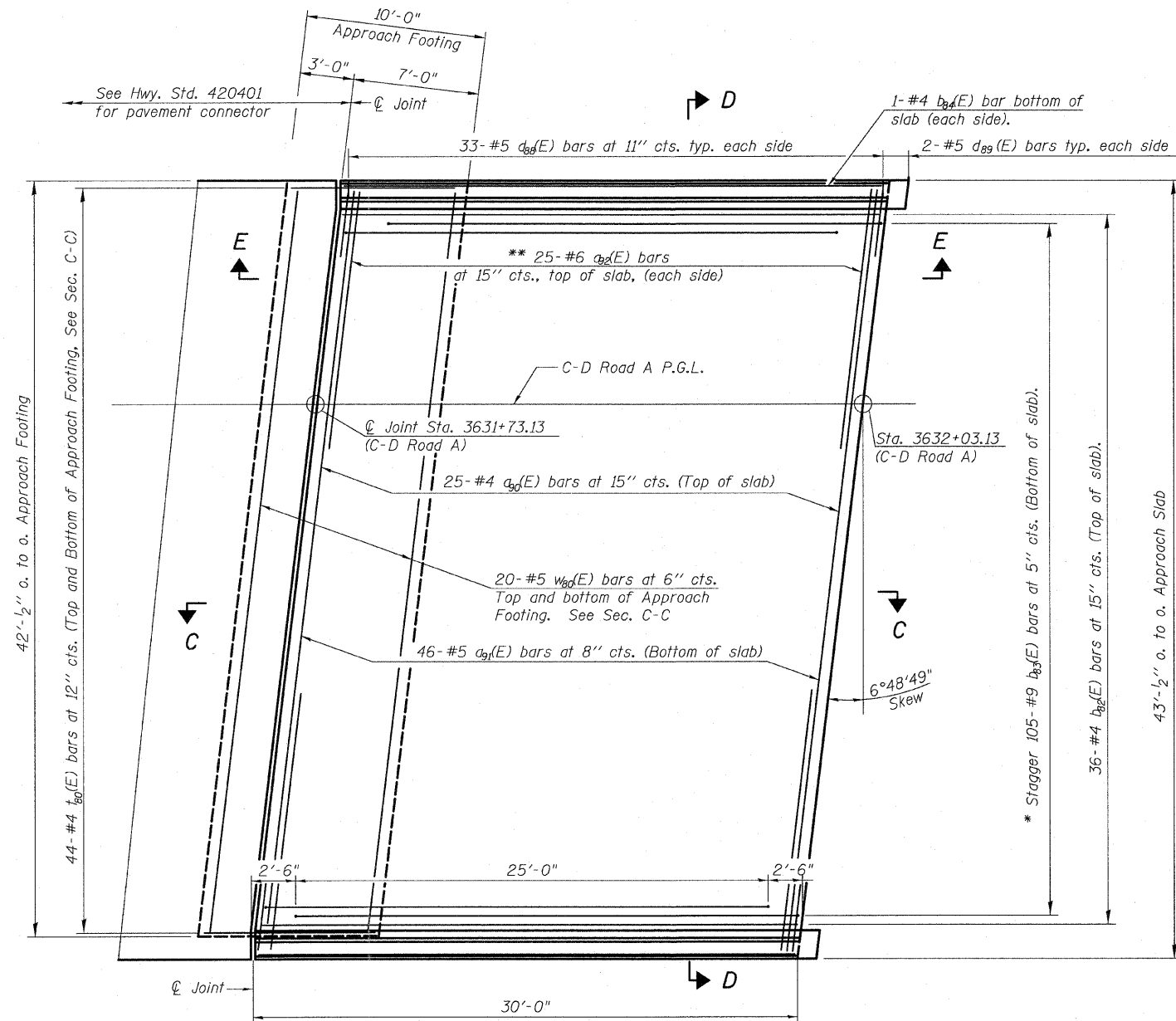


STATE OF ILLINOIS  
DEPARTMENT OF TRANSPORTATION

Notes:  
See sheet 23 of 62 for Sections C-C & D-D and View E-E.  
 $a_3(E)$  and  $a_1(E)$  bar spacings measured along  $\varnothing$  Rdwy.

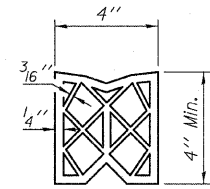


PLAN

\* Tilt #9  $b_3(E)$  bars as required to maintain clearance.  
\*\* Space between  $a_3(E)$  bars, typ. each parapet.

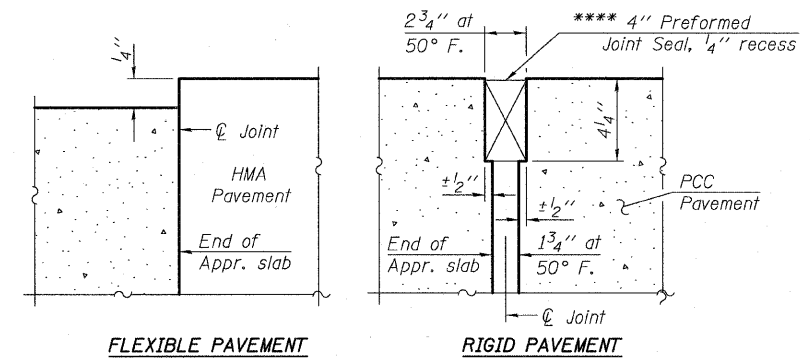
MINIMUM BAR LAPS

#4 Bar 2'-11"  
#5 Bar 3'-3"



PREFORMED  
JOINT SEAL

\*\*\*\* Cost included with Concrete Superstructure.



FLEXIBLE PAVEMENT

RIGID PAVEMENT

DETAIL A

WEST APPROACH SLAB C-D ROAD A - 1  
STRUCTURE NO. 016-1252

TYLIN INTERNATIONAL

DESIGNED	MRB	REVISIONS	
CHECKED	AMD	NAME	DATE
DRAWN	MRB		
CHECKED	LS,SP,PDF		
DATE	03/18/10		

SHEET NO. 22	F.A.I. RTE.	SECTION	COUNTY	TOTAL SHEETS	SHEET NO.
	57	1414.2B	COOK	516	335
62 SHEETS			CONTRACT NO. 60J27		
FED. ROAD DIST. NO. 1 ILLINOIS FED. AID PROJECT					

P:\602540\57-294\STRUCTURAL\1-57 OVER RAMP BY final submittal 03-17-2010 final submittal 03172010\0161252-60J27-022-W\_APPRI.dgn 9:54:06 AM 3/18/2010