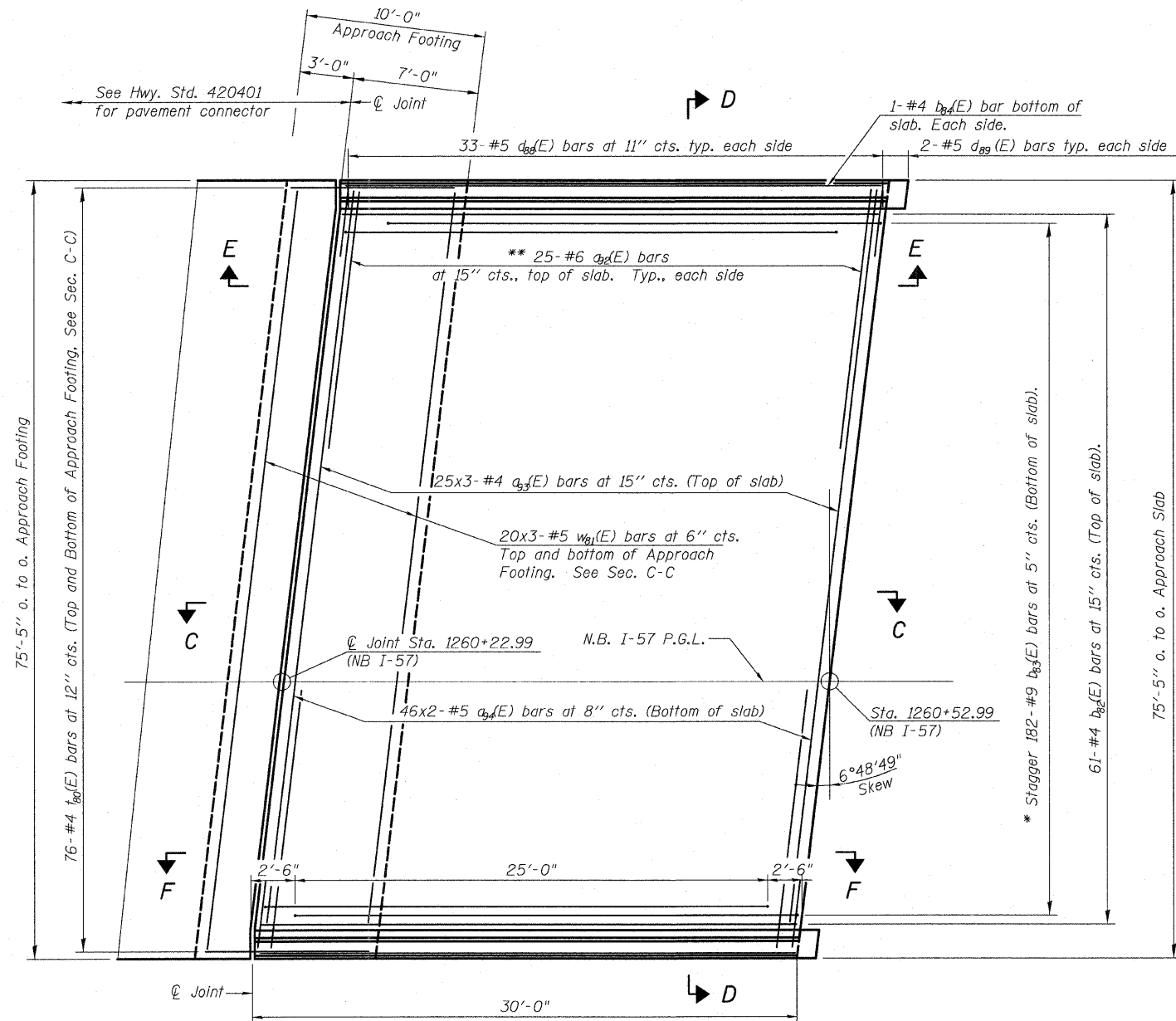


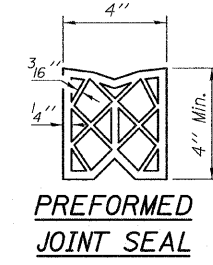
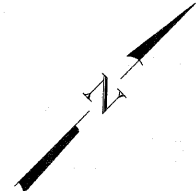
STATE OF ILLINOIS
DEPARTMENT OF TRANSPORTATION

Notes:
See sheet 25 of 62 for Sections C-C & D-D and Views E-E and F-F.
 $a_{93}(E)$ and $a_{94}(E)$ bar spacings measured along \varnothing Rdwy.
Bars indicated thus 20x3-#5 etc. indicates 20 lines of bars with three lengths per line.



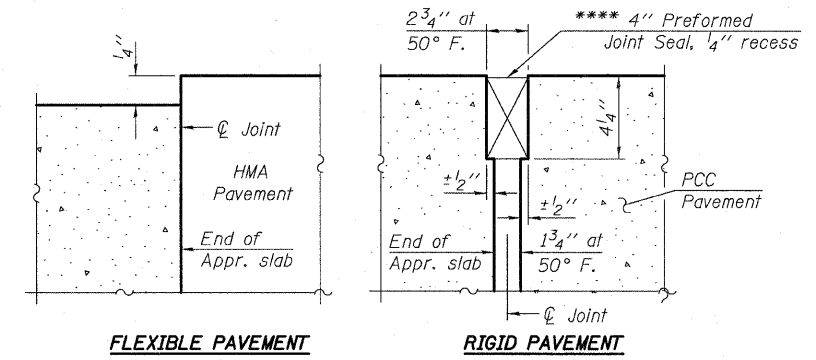
PLAN

* Tilt #9 $b_{83}(E)$ bars as required to maintain clearance.
** Space between $a_{93}(E)$ bars, typ. each parapet.



PREFORMED
JOINT SEAL

**** Cost included with Concrete Superstructure.



DETAIL A

MINIMUM BAR LAPS

#4 Bar 2'-11"
#5 Bar 3'-3"

WEST APPROACH SLAB NB I-57 - 1
STRUCTURE NO. 016-1252

TYLIN INTERNATIONAL

DESIGNED	MRB	REVISIONS	
CHECKED	AMD	NAME	DATE
DRAWN	MRB		
CHECKED	LS,SP,PDF		
DATE	03/18/10		

SHEET NO. 24 62 SHEETS	F.A.I RTE.	SECTION	COUNTY	TOTAL SHEETS	SHEET NO.
	57	1414.2B	COOK	516	337
			CONTRACT NO. 60J27		
FED. ROAD DIST. NO. 1 ILLINOIS FED. AID PROJECT					

P:\602540157-2941\STRUCTURAL\I-57 OVER RAMP BY\Final submittal_03-17-2010\Final submittal_03-17-2010\Final submittal_03-17-2010\0161252-60J27-024-W_APPR3.dgn 9:54:10 AM 3/18/2010