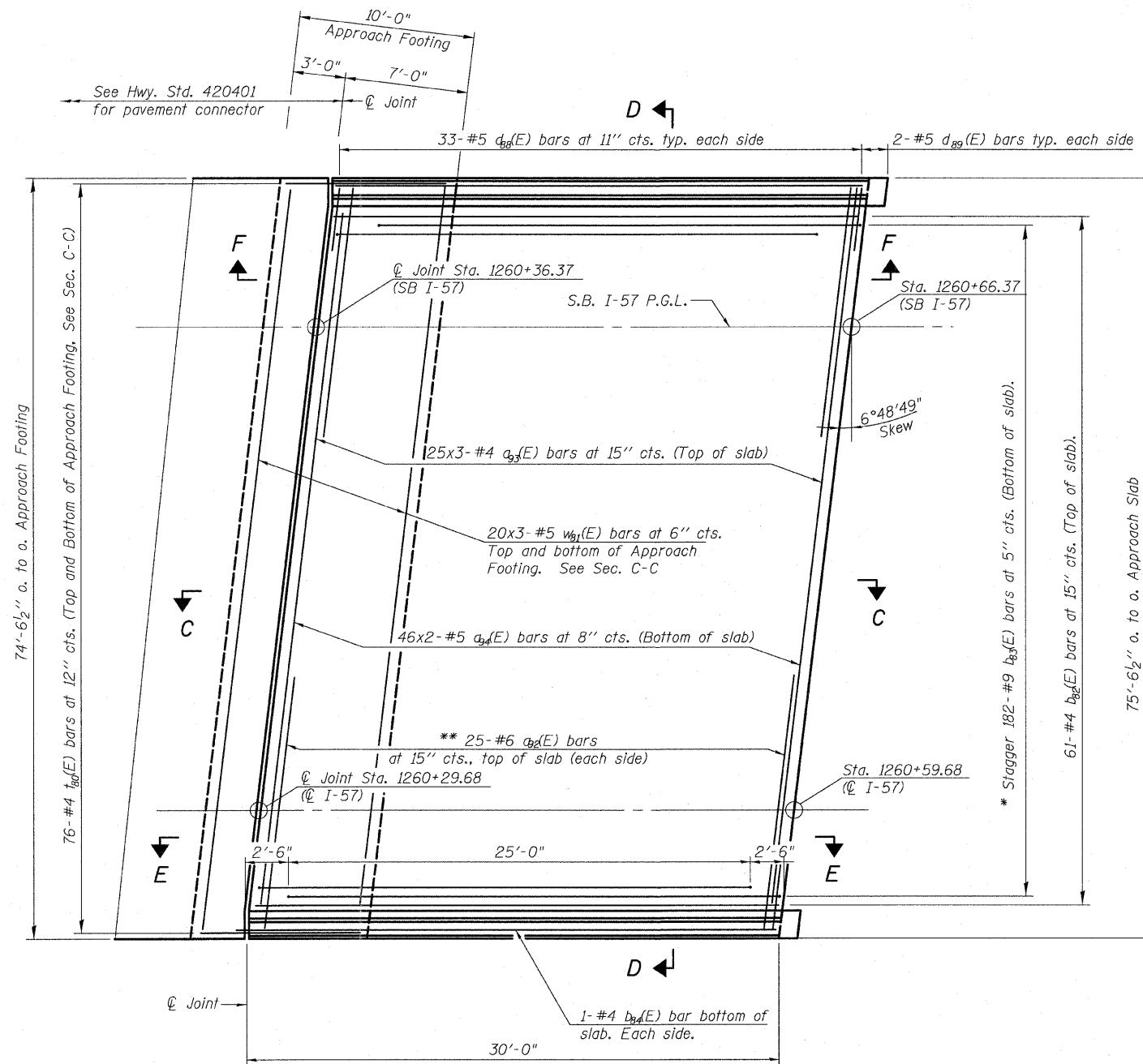


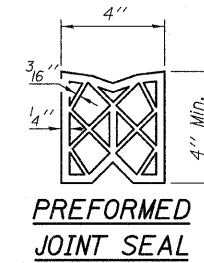
STATE OF ILLINOIS
DEPARTMENT OF TRANSPORTATION

Notes:
See sheet 27 of 62 for Sections C-C & D-D and View E-E.
a₉₅(E) and a₉₆(E) bar spacings measured along \varnothing Rdwy.
Bars indicated thus 20x3-#5 etc indicates 20 lines of bars with three lengths per line.

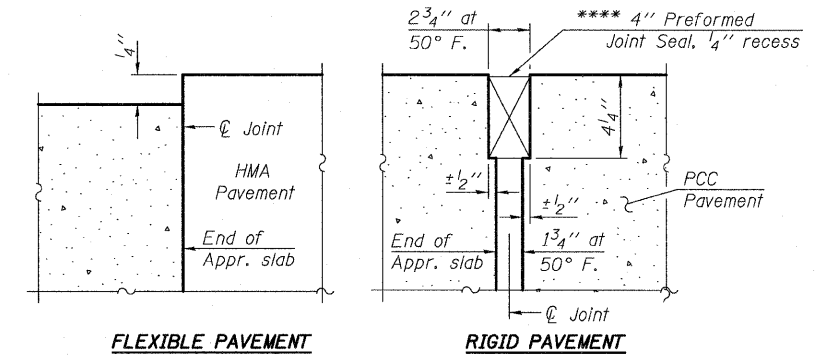


PLAN

* Tilt #9 b₉₃(E) bars as required to maintain clearance.
** Space between a₉₃(E) bars, typ. each parapet.



**** Cost included with Concrete Superstructure.



DETAIL A

MINIMUM BAR LAPS

#4 Bar 2'-11"
#5 Bar 3'-3"

TYLIN INTERNATIONAL

DESIGNED	MRB	REVISIONS	
CHECKED	AMD	NAME	DATE
DRAWN	MRB		
CHECKED	LS,SP,PDF		
DATE	03/18/10		

SHEET NO. 26	F.A.I. RTE.	SECTION	COUNTY	TOTAL SHEETS	SHEET NO.
62 SHEETS	57	1414.2B	COOK	516	339
			CONTRACT NO. 60J27		
FED. ROAD DIST. NO. 1		ILLINOIS	FED. AID PROJECT		

WEST APPROACH SLAB SB I-57 - 1
STRUCTURE NO. 016-1252