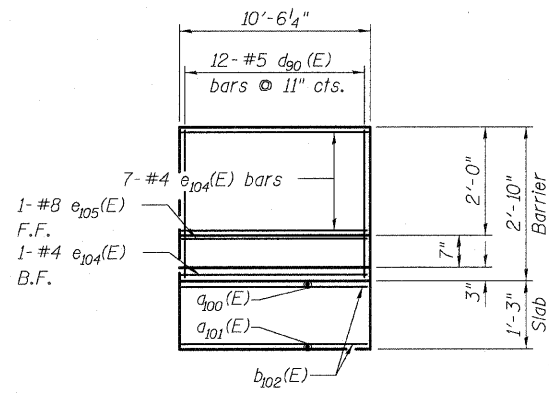
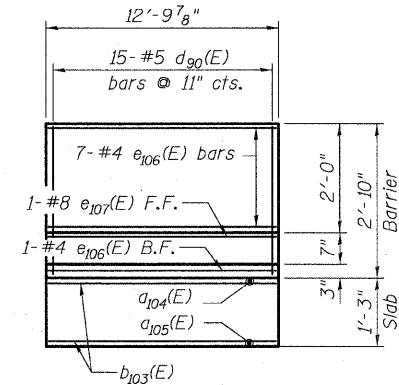


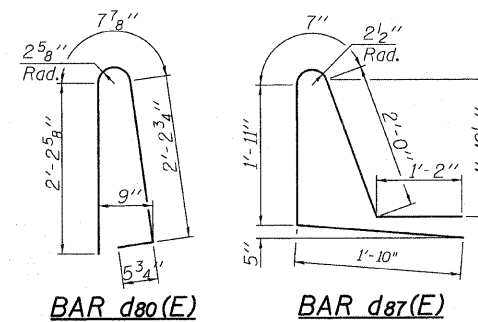
STATE OF ILLINOIS
DEPARTMENT OF TRANSPORTATION



INSIDE ELEVATION OF NORTH BARRIER

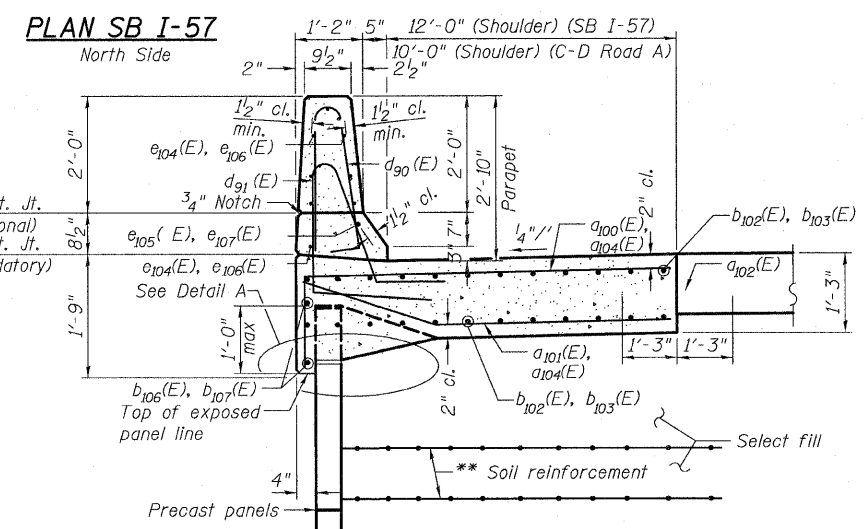
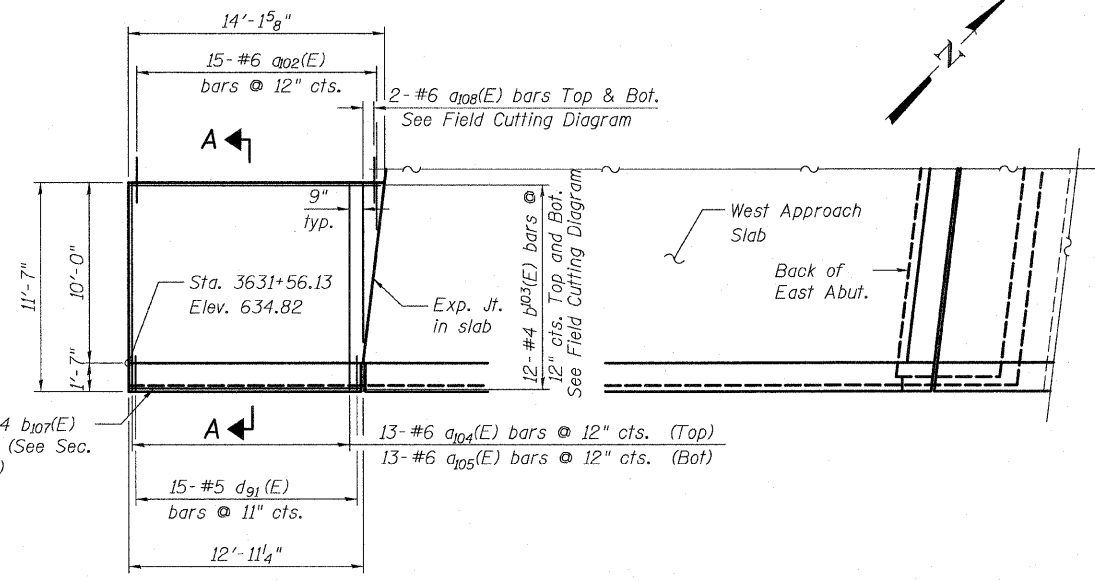
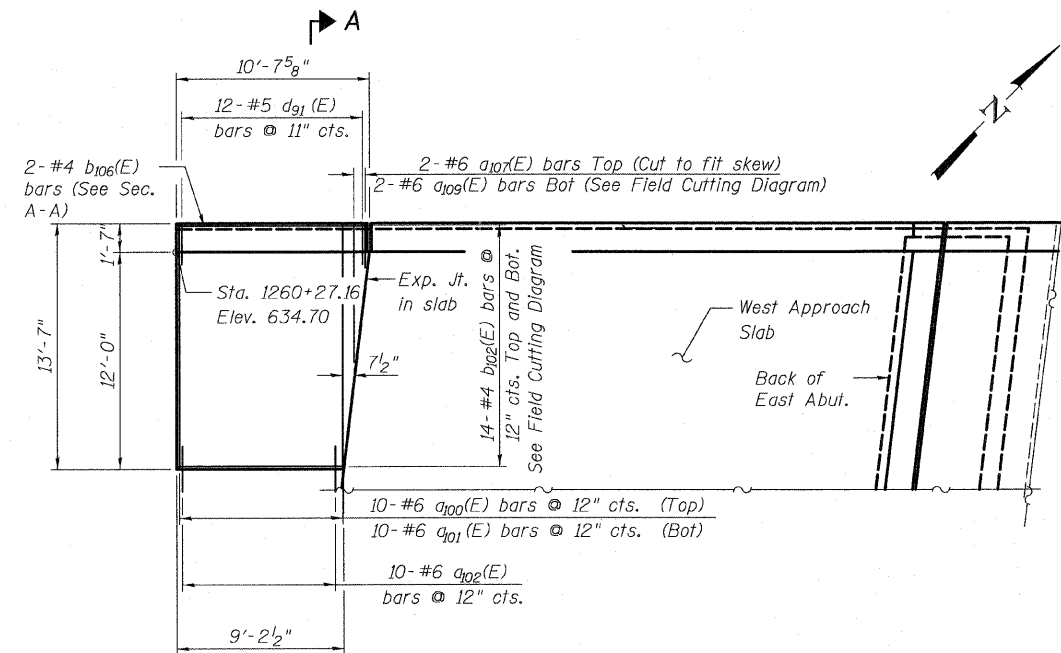


INSIDE ELEVATION OF SOUTH BARRIER



BILL OF MATERIAL

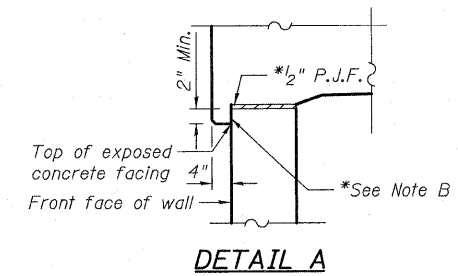
Bar	No.	Size	Length	Shape
a100(E)	10	#6	14'-8"	┌
a101(E)	10	#6	13'-3"	┌
a102(E)	25	#6	2'-6"	┌
a104(E)	13	#6	12'-8"	┌
a105(E)	13	#6	11'-3"	┌
a107(E)	2	#6	9'-0"	┌
a108(E)	4	#6	11'-2"	┌
a109(E)	2	#6	9'-11"	┌
b102(E)	28	#4	19'-3"	┌
b103(E)	24	#4	26'-6"	┌
b106(E)	2	#4	10'-3"	┌
b107(E)	2	#4	12'-7"	┌
d80(E)	27	#5	5'-7"	┌
d87(E)	27	#5	7'-6"	┌
e104(E)	8	#4	10'-3"	┌
e105(E)	1	#8	10'-3"	┌
e106(E)	8	#4	12'-6"	┌
e107(E)	1	#8	12'-6"	┌
Concrete Superstructure				Cu. Yds. 16.8
Reinforced Bars, Epoxy Coated				Pound 2,480



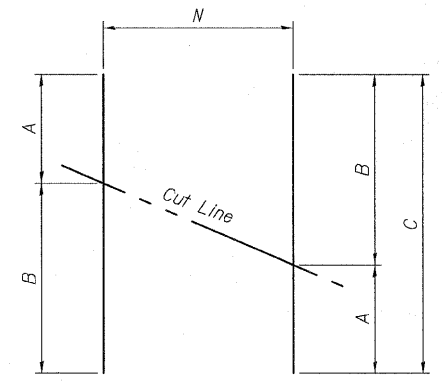
SECTION A-A

PLAN C-D ROAD A South Side

*Cost included with Concrete Superstructure.



Note B:
*Bond breaker membrane on top and front of fascia wall.



FIELD CUTTING DIAGRAM

BAR a107(E)

BAR a104(E)

BAR a100(E)

Bar	N	A	B	C
a107(E)	2	2'-5"	8'-9"	11'-2"
a104(E)	1	2'-4"	7'-7"	9'-11"
b102(E)	14	8'-11"	10'-4"	19'-3"
b103(E)	12	12'-8"	13'-10"	26'-6"

Order bars full length. Cut as shown and use remainder of bars in opposite face

WEST ANCHORAGE SLAB DETAILS
S.N. 016-1252

TYLIN INTERNATIONAL	DESIGNED - DY	REVISIONS	
	CHECKED - AD,LS	NAME	DATE
	DRAWN - DY,EI		
	CHECKED - LS,SP,PDF		
	DATE - 03/18/10		

SHEET NO. 34	F.A.I. RTE. 57	SECTION 1414.2B	COUNTY COOK	TOTAL SHEETS 516	SHEET NO. 347
62 SHEETS	CONTRACT NO. 60J27			FED. ROAD DIST. NO. 1 ILLINOIS FED. AID PROJECT	

P:\602540\57-294\STRUCTURAL\I-57 OVER RAMP B.F.inel submittal 03-17-2010\F.inel submittal 03-17-2010\0161251-60J27-034-W.ANCH.SLAB.dgn 3/18/2010 9:54:27 AM