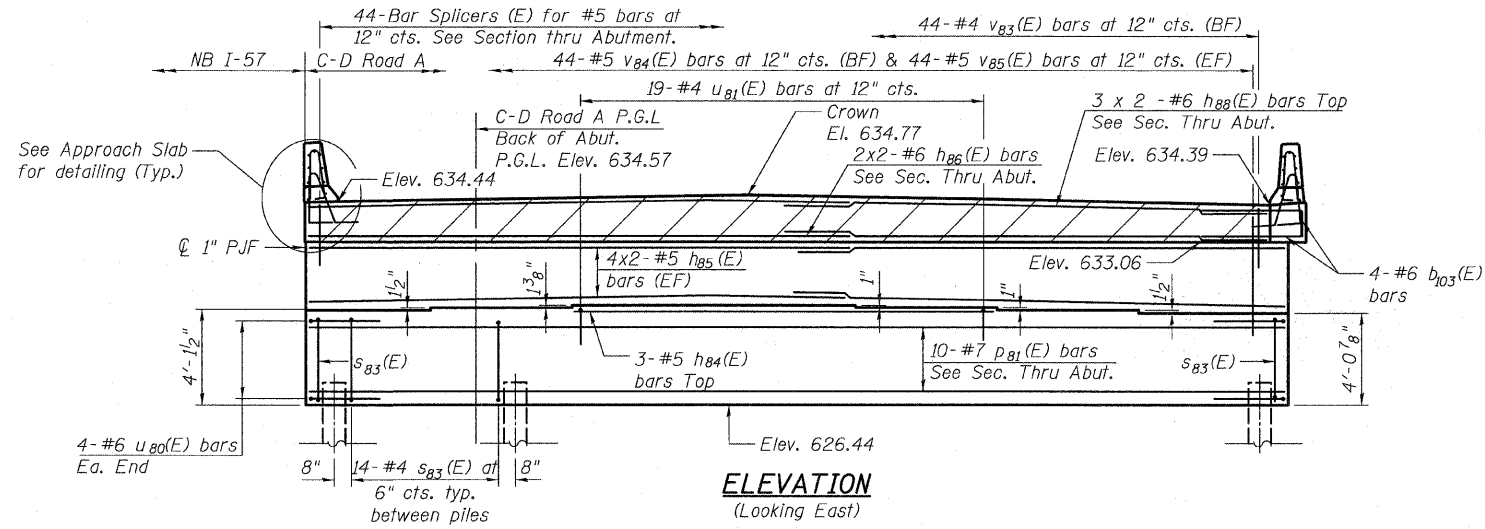


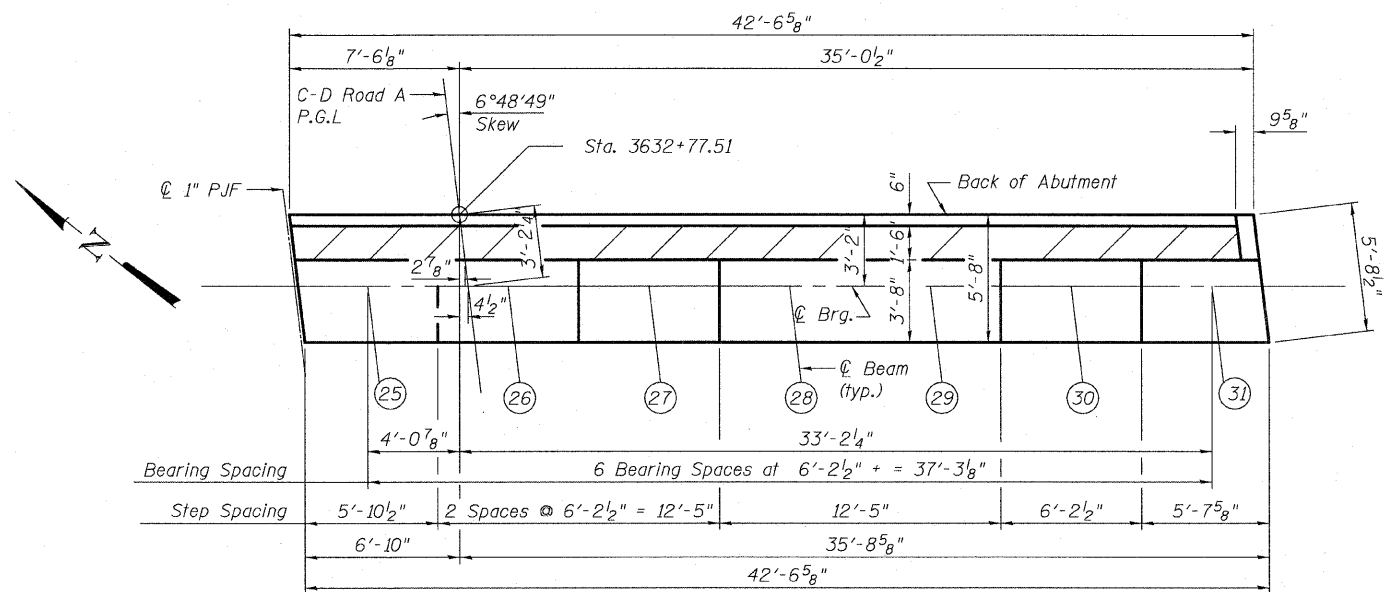
STATE OF ILLINOIS
DEPARTMENT OF TRANSPORTATION



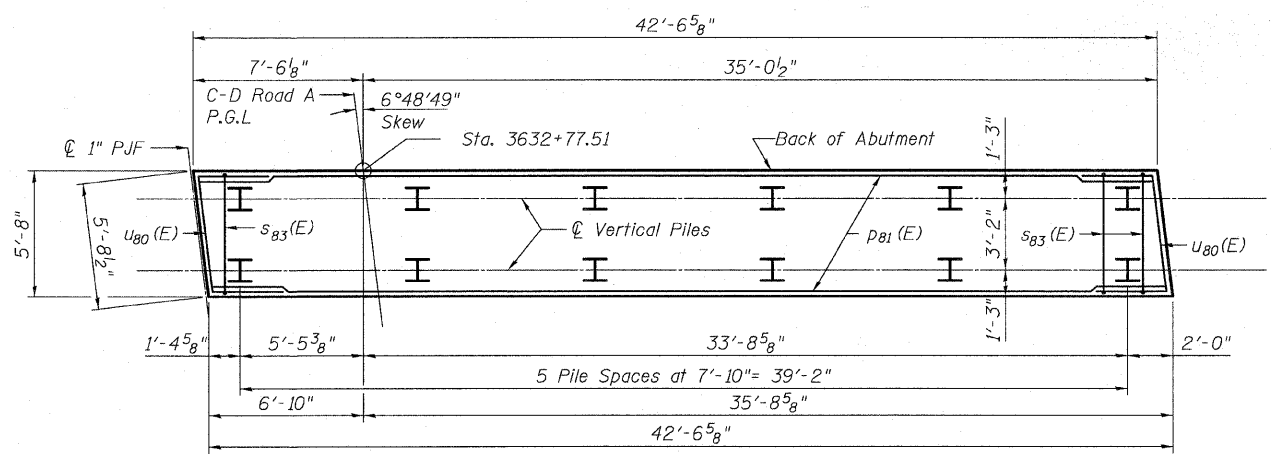
ELEVATION
(Looking East)

**BRIDGE SEAT
ELEVATIONS**

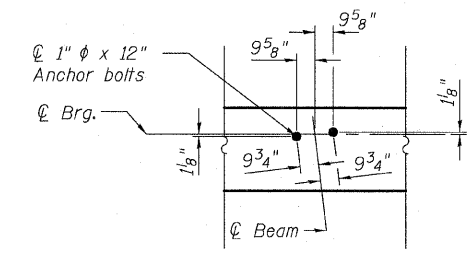
Beam	Seat Elevation
25	630.56
26	630.68
27	630.79
28	630.79
29	630.71
30	630.63
31	630.51



TOP VIEW



PLAN-PILE CAP



**ANCHOR BOLT
LAYOUT**

NOTES:

See Sheet 50 of 62 for abutment section, pile data and Bill of Material.
Space reinforcement in cap to miss anchor bolts.
Pour steps monolithically with cap.
Hatched area to be poured after superstructure forms have been removed. Quantity of concrete included with Concrete Superstructure.
Bars indicated thus 20 x 3- #7 etc. indicates 20 lines of bars with 3 lengths per line.
All edges shall have standard 3/4\"/>

**MINIMUM BAR
LAPS**

Bar	Lap	Notes
#4	2'-7"	
#5	3'-3"	
#6	3'-10"	
#6	4'-5" (Top)	for h ₈₈ (E)
#7	5'-2"	
#7	5'-10" (Top)	

**EAST ABUTMENT - 1
S.N. 016-1252**

TYLIN INTERNATIONAL	DESIGNED - DY	REVISIONS		SHEET NO. 47	F.A.I. RTE. 57	SECTION 1414.2B	COUNTY COOK	TOTAL SHEETS	SHEET NO.
	CHECKED - AD,LS	NAME	DATE					516	360
	DRAWN - DY,EI							CONTRACT NO. 60J27	
	CHECKED - LS,SP,PDF							FED. ROAD DIST. NO. 1 ILLINOIS FED. AID PROJECT	
	DATE - 03/18/10								

P:\602540157-2941\STRUCTURAL\I-57 OVER RAMP BX\Final submittal_03-17-2010\Final submittal_03-17-2010\0161252-60J27-047-E-Abut-RAMP A.dgn 3/18/2010 9:54:46 AM