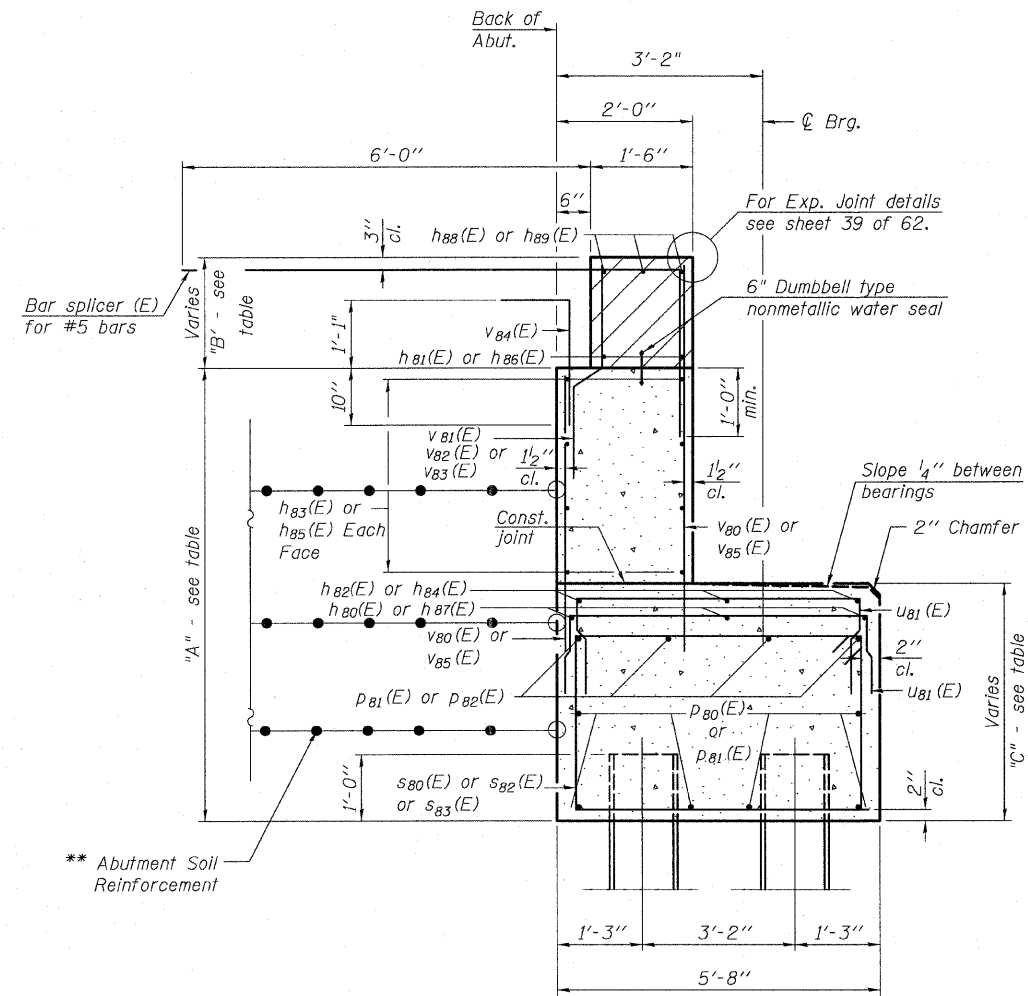


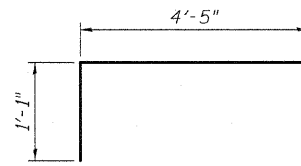
STATE OF ILLINOIS  
DEPARTMENT OF TRANSPORTATION



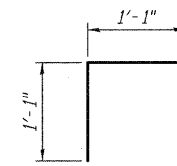
**SEC. THRU ABUT.**

\*\* The M.S.E. wall supplier shall design the abutment soil reinforcement to resist a horizontal force of 2 kips/ft. Contractor shall coordinate abutment construction with construction of MSE retaining wall.

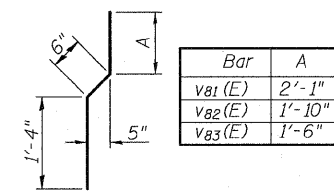
Location	A	B	C
C-D Road A	6'-7 1/2"	1'-4" to 1'-8 1/2"	4'-0 3/4" to 4'-4 1/8"
NB I-57	6'-2 3/8"	1'-4" to 2'-0 3/4"	3'-7 5/8" to 4'-3 1/2"
SB I-57	6'-0 5/8"	1'-4" to 2'-2 7/8"	3'-6" to 4'-3 7/8"



**BAR b<sub>103</sub>(E)**



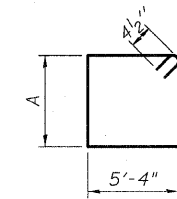
**BAR v<sub>B4</sub>(E)**



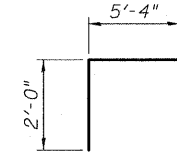
**BAR v<sub>B1</sub>(E), v<sub>B2</sub>(E) & v<sub>B3</sub>(E)**

Bar	A
s <sub>B0</sub> (E)	3'-2"
s <sub>B2</sub> (E)	3'-5"
s <sub>B3</sub> (E)	3'-9"

**BARS s<sub>B0</sub>(E), s<sub>B2</sub>(E) & s<sub>B3</sub>(E)**



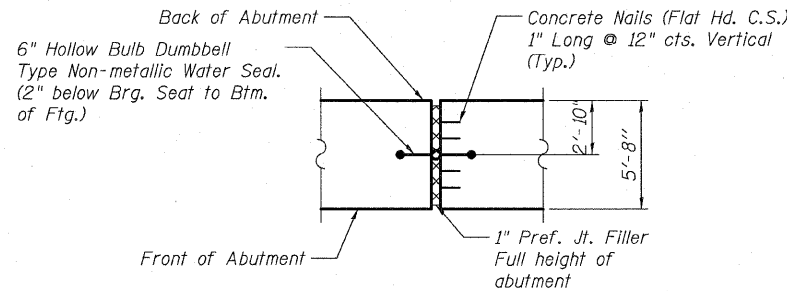
**BAR u<sub>B1</sub>(E)**



**BARS u<sub>B1</sub>(E)**

**PILE DATA**

Type: HP12x53 with Pile Shoes  
Nominal Required Bearing: 300 kips  
Factored Resistance Available: 150 kips  
Est. Length: 36 ft  
No. Production Piles: 51  
No. Test Piles: 1



**SEC. THRU 1" EXP. JT. FILLER**

Cost of Water Seal included in the cost of Concrete Structures.

**EAST ABUTMENT  
BILL OF MATERIAL**

Bar	No.	Size	Length	Shape
b <sub>103</sub> (E)	8	#6	6'-4"	Γ
h <sub>80</sub> (E)	6	#5	29'-9"	—
h <sub>81</sub> (E)	8	#6	39'-9"	—
h <sub>82</sub> (E)	6	#5	18'-6"	—
h <sub>83</sub> (E)	32	#5	39'-10"	—
h <sub>84</sub> (E)	3	#5	18'-2"	—
h <sub>85</sub> (E)	16	#5	22'-9"	—
h <sub>86</sub> (E)	4	#6	22'-8"	—
h <sub>87</sub> (E)	3	#5	43'-7"	—
h <sub>88</sub> (E)	6	#6	23'-9"	—
h <sub>89</sub> (E)	12	#6	40'-1"	—
p <sub>B0</sub> (E)	24	#7	40'-6"	—
p <sub>B1</sub> (E)	10	#7	42'-3"	—
p <sub>B2</sub> (E)	16	#7	40'-10"	—
s <sub>B0</sub> (E)	132	#4	17'-9"	□
s <sub>B2</sub> (E)	132	#4	18'-3"	□
s <sub>B3</sub> (E)	72	#4	18'-11"	□
u <sub>B0</sub> (E)	24	#6	8'-5"	—
u <sub>B1</sub> (E)	158	#4	7'-4"	—
v <sub>B0</sub> (E)	154	#5	5'-9"	—
v <sub>B1</sub> (E)	77	#4	3'-11"	—
v <sub>B2</sub> (E)	77	#4	3'-8"	—
v <sub>B3</sub> (E)	44	#4	3'-4"	—
v <sub>B4</sub> (E)	198	#5	3'-10"	—
v <sub>B5</sub> (E)	242	#5	5'-11"	—
Structure Excavation			Cu. Yd.	4,010
Concrete Structures			Cu. Yd.	203.4
Reinforcement Bars, Epoxy Coated			Pound	16,880
Furnishing Steel Piles, HP12x53			Foot	1,836
Pile Shoes			Each	52
Driving Piles			Foot	1,836
Test Pile, HP12x53			Each	1
Concrete Sealer			Sq. Ft.	1,610

For details of Bar Splicers, see sheet 55 of 62.  
For details of piles, see sheet 56 of 62.

**EAST ABUTMENT DETAILS  
S.N. 016-1252**

**TYLIN INTERNATIONAL**

DESIGNED	DY	REVISIONS	
CHECKED	AD,LS	NAME	DATE
DRAWN	DY,EI		
CHECKED	LS,SP,PDF		
DATE	03/18/10		

SHEET NO. 50	F.A.I. RTE.	SECTION	COUNTY	TOTAL SHEETS	SHEET NO.
62 SHEETS	57	1414.2B	COOK	516	363
CONTRACT NO. 60J27					
FED. ROAD DIST. NO. 1 ILLINOIS FED. AID PROJECT					

P:\602540\57-2941\STRUCTURAL\1-57-OVER-RAMP-BX\Final-submittal\_03-17-2010\Final-submittal\_03-17-2010\0161252-60J27-050-E-ABUT-DT.dwg 9:54:53 AM 3/18/2010