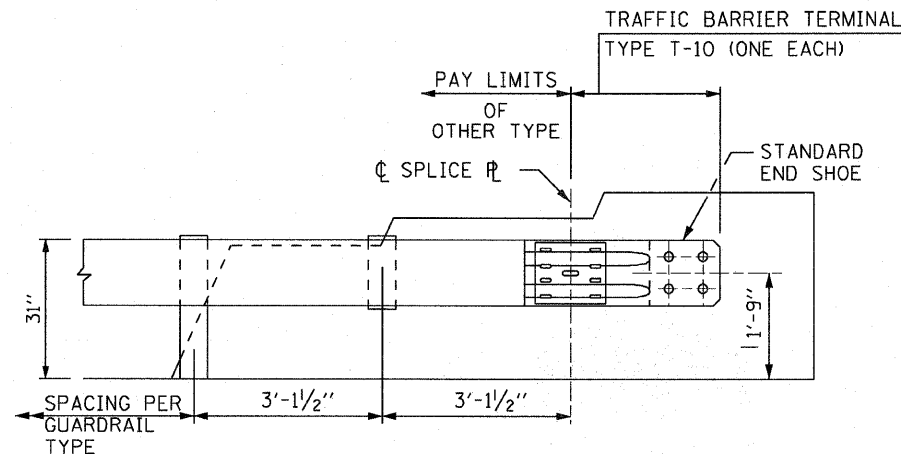
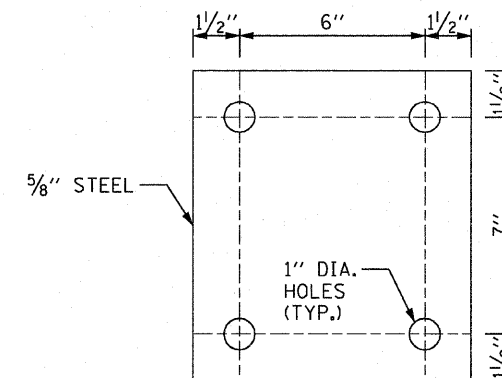


ELEVATION

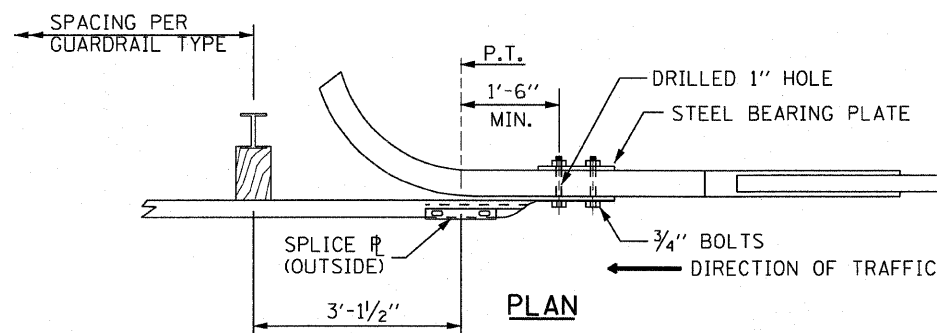


ELEVATION

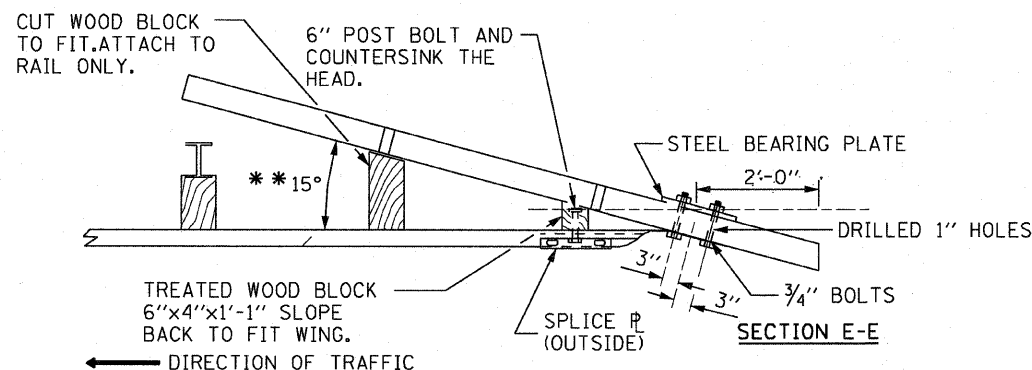


PARAPET STEEL BEARING PLATE DETAIL

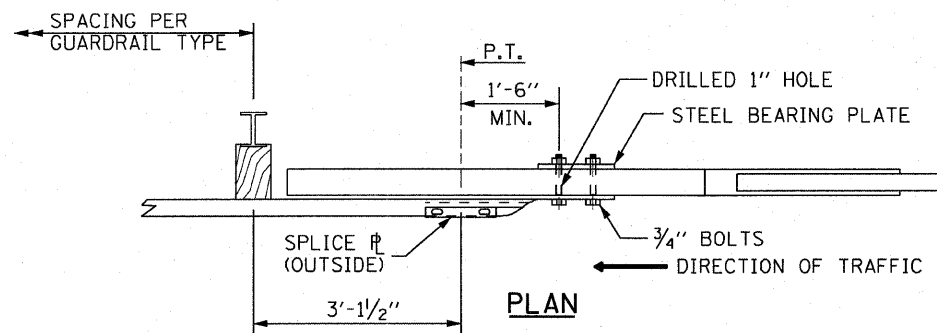
(4 EACH INDIVIDUAL 5"x5"x5/8" STEEL PLATES WITH CENTERED HOLES MAYBE SUBSTITUTED FOR THE PLATE SHOWN)



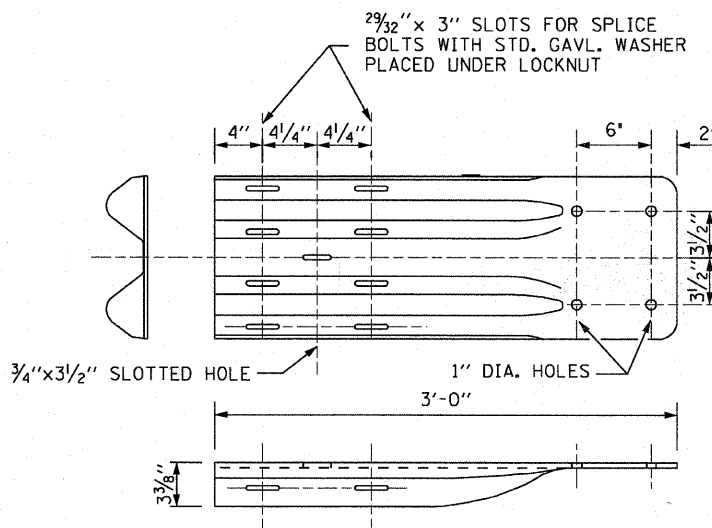
CURVED WING



PLAN FLARED WING



TANGENT WING



END SHOE

NOTES:

- SEE STANDARD C1 FOR DETAILS OF GUARDRAIL NOT SHOWN.
- THE TYPE T10 TERMINAL IS TYPICALLY UTILIZED TO CONNECT GALVANIZED STEEL PLATE BEAM GUARDRAIL TO THE DEPARTING END OF AN EXISTING BRIDGE CONCRETE WING WALL.
- UNDER NO CIRCUMSTANCES SHALL AN EXISTING TERMINAL, THAT WAS DESIGNED USING A PREVIOUS STANDARD, BE ATTACHED TO OR MODIFIED IN ANYWAY FROM ITS ORIGINAL DESIGN. IF ANY MODIFICATION IS REQUIRED AND A PROPER BARRIER WARRANT HAS BEEN COMPLETED, THE ENTIRE BARRIER INSTALLATION SHALL BE COMPLETELY REMOVED AND REPLACED WITH A NEW SYSTEM THAT CONFORMS TO THE CURRENT STANDARD.
- TRAFFIC BARRIER TERMINAL SHALL BE IN ACCORDANCE WITH THE MANUFACTURER'S DETAILS AND SPECIFICATIONS.
- WHEN END SHOE IS ATTACHED TO A BRIDGE PARAPET WHICH HAS AN EXPANSION JOINT, THE BOLTS SHALL BE PROVIDED WITH A LOCKNUT OR DOUBLE NUT AND SHALL BE TIGHTENED ONLY TO A POINT THAT WILL ALLOW GUARDRAIL MOVEMENT.
- THE TERMINAL SYSTEM HAS BEEN PERFORMANCE-TESTED FOR CRASHWORTHINESS UNDER PROCEDURES DEFINED IN THE NATIONAL COOPERATIVE HIGHWAY RESEARCH PROGRAM (NCHRP) REPORT 350. NO MODIFICATION TO THIS STANDARD DRAWING SHALL BE PERMITTED.

GENERAL NOTES:

- * TAPER GUARDRAIL TO 2'-7/8" AT THIRD POST.
- ** OR TO BE DETERMINED IN THE FIELD.

APPROVED: *Paul Kovacs* CHIEF ENGINEER DATE 7-1-2009

DATE	REVISIONS
3-1-2010	REVISED NOTES, ADDED END SHOE AND PARAPET BEARING PLATE DETAIL.

Illinois Tollway
 Open Roads for a Faster Future

TRAFFIC BARRIER TERMINAL, TYPE T10

STANDARD C11-01

409 OF 516