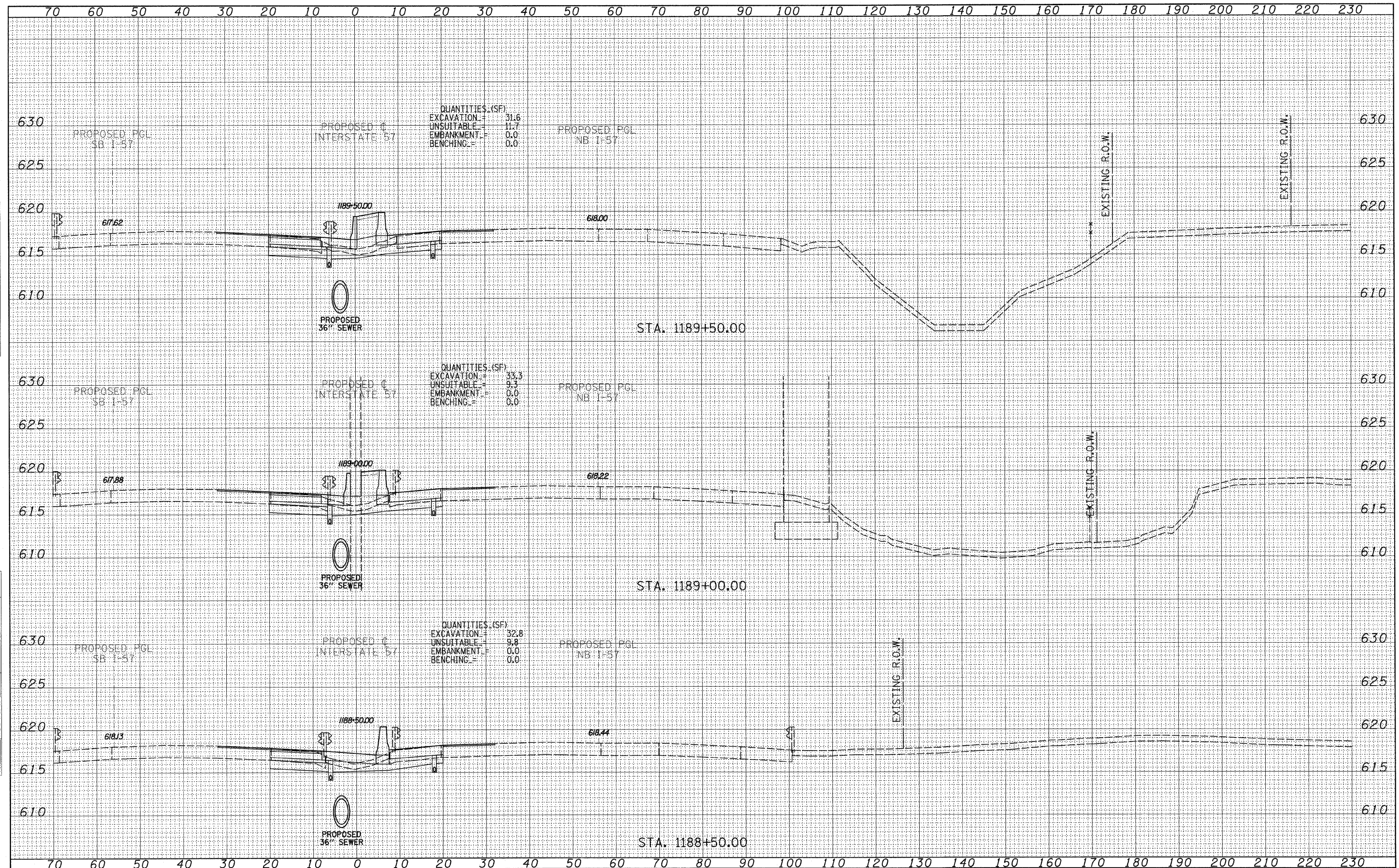


DATE	
BY	
ORIGINAL SURVEY	
SURVEYED	
PLOTTED	
TEMPLATE	
NOTE BOOK	
AREAS CHECKED	
NO.	

DATE	
BY	
ORIGINAL SURVEY	
SURVEYED	
PLOTTED	
TEMPLATE	
NOTE BOOK	
AREAS CHECKED	
NO.	



QUANTITIES (SF)
 EXCAVATION = 31.6
 UNSUITABLE = 11.7
 EMBANKMENT = 0.0
 BENCHING = 0.0

QUANTITIES (SF)
 EXCAVATION = 33.3
 UNSUITABLE = 9.3
 EMBANKMENT = 0.0
 BENCHING = 0.0

QUANTITIES (SF)
 EXCAVATION = 32.8
 UNSUITABLE = 9.8
 EMBANKMENT = 0.0
 BENCHING = 0.0

TYLIN INTERNATIONAL

USER NAME =
 PLLOT SCALE =
 PLOT DATE =

DESIGNED - JDF
 DRAWN - JDF
 CHECKED - JPM
 DATE - 3/18/2010

REVISED -
 REVISED -
 REVISED -
 REVISED -

STATE OF ILLINOIS
 DEPARTMENT OF TRANSPORTATION

I-57 AT I-294 INTERCHANGE PROJECT
 PROPOSED I-57 CROSS SECTIONS
 SCALE: 1" = 10' V, 1" = 100' H
 SHEET NO. OF SHEETS STA. 1188+50.00 TO STA. 1189+50.00

F.A.I. RTE.	SECTION	COUNTY	TOTAL SHEETS	SHEET NO.
57	1414.2B	COOK	516	432
FED. ROAD DIST. NO. ILLINOIS FED. AID PROJECT			CONTRACT NO. 60J27	