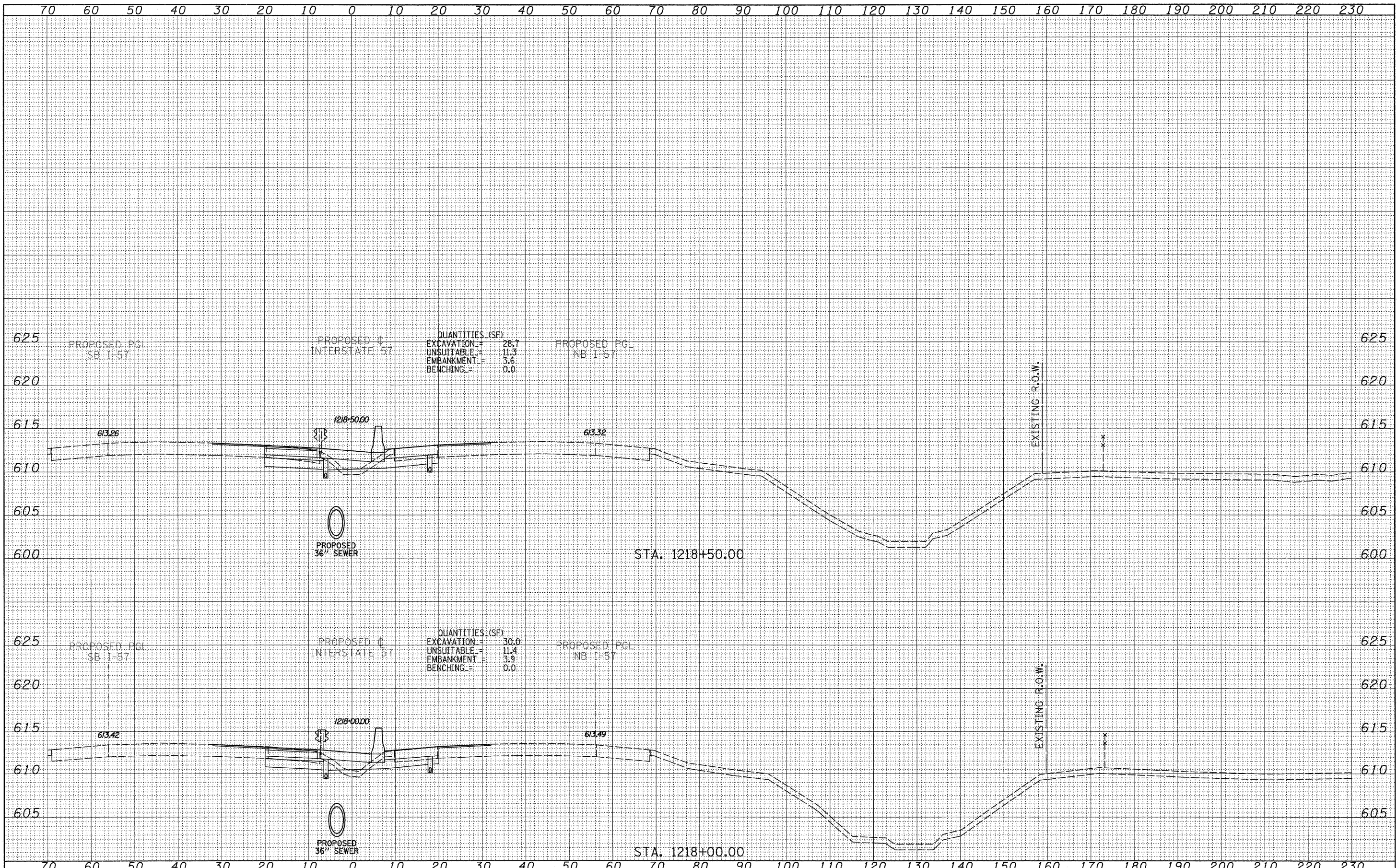


DATE	
BY	
SURVEYED	
PLOTTED	
NOTE BOOK	
AREAS CHECKED	
NO.	

DATE	
BY	
ORIGINAL SURVEY	
PLOTTED	
NOTE BOOK	
AREAS CHECKED	
NO.	



QUANTITIES (SF)

EXCAVATION	=	28.7
UNSUITABLE	=	11.3
EMBANKMENT	=	3.6
BENCHING	=	0.0

QUANTITIES (SF)

EXCAVATION	=	30.0
UNSUITABLE	=	11.4
EMBANKMENT	=	3.9
BENCHING	=	0.0

TYLIN INTERNATIONAL

USER NAME =
 PLOT SCALE =
 PLOT DATE =

DESIGNED - JDF
 DRAWN - JDF
 CHECKED - JPM
 DATE - 3/18/2010

REVISED -
 REVISED -
 REVISED -
 REVISED -

**STATE OF ILLINOIS
 DEPARTMENT OF TRANSPORTATION**

**I-57 AT I-294 INTERCHANGE PROJECT
 PROPOSED I-57 CROSS SECTIONS**
 SCALE: 1" = 10' V, 1" = 80' H
 SHEET NO. OF SHEETS STA. 1218+00.00 TO STA. 1218+50.00

F.A.T. RTE.	SECTION	COUNTY	TOTAL SHEETS	SHEET NO.
57	1414.2B	COOK	516	455
FED. ROAD DIST. NO. ILLINOIS FED. AID PROJECT			CONTRACT NO. 60J27	

P:\602540(57-294)\Road\PI_157 BR\PI_157XS_SHT.dgn