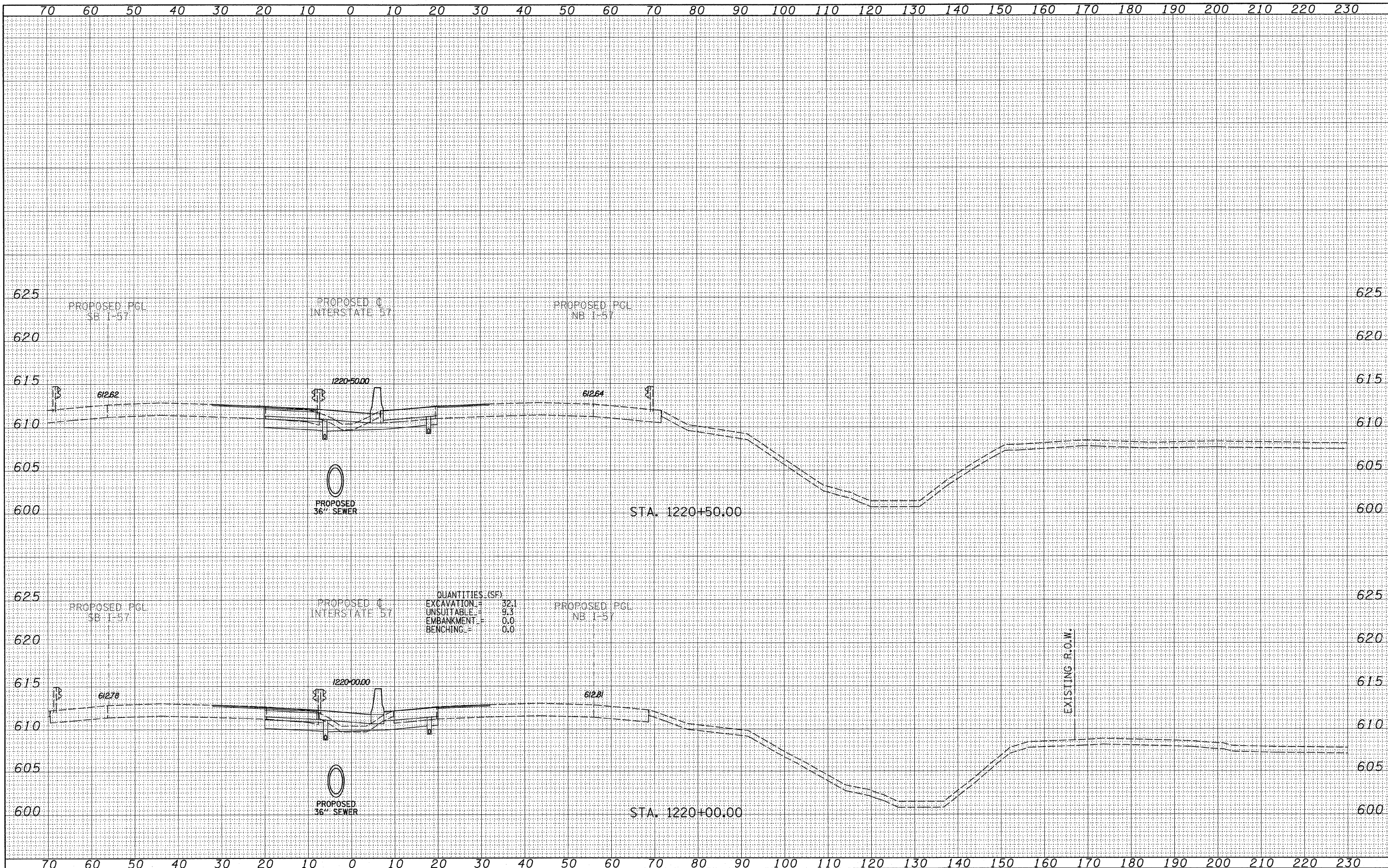


DATE	
BY	
NO.	
FINAL SURVEY	SURVEYED
NOTE BOOK	PLOTTED
NO.	TEMPLATE
	AREAS CHECKED

DATE	
BY	
NO.	
ORIGINAL SURVEY	SURVEYED
NOTE BOOK	PLOTTED
NO.	TEMPLATE
	AREAS CHECKED



**TYLIN INTERNATIONAL**

USER NAME =  
 PLOT SCALE =  
 PLOT DATE =

DESIGNED - JDF  
 DRAWN - JDF  
 CHECKED - JPM  
 DATE - 3/18/2010

REVISED -  
 REVISED -  
 REVISED -  
 REVISED -

**STATE OF ILLINOIS  
 DEPARTMENT OF TRANSPORTATION**

**I-57 AT I-294 INTERCHANGE PROJECT  
 PROPOSED I-57 CROSS SECTIONS**  
 SCALE: 1" = 10' V, 1" = 100' H  
 SHEET NO. OF SHEETS STA. 1220+00.00 TO STA. 1220+50.00

F.A.I. RTE.	SECTION	COUNTY	TOTAL SHEETS	SHEET NO.
57	1414.2B	COOK	516	457
FED. ROAD DIST. NO. ILLINOIS FED. AID PROJECT			CONTRACT NO. 60J27	