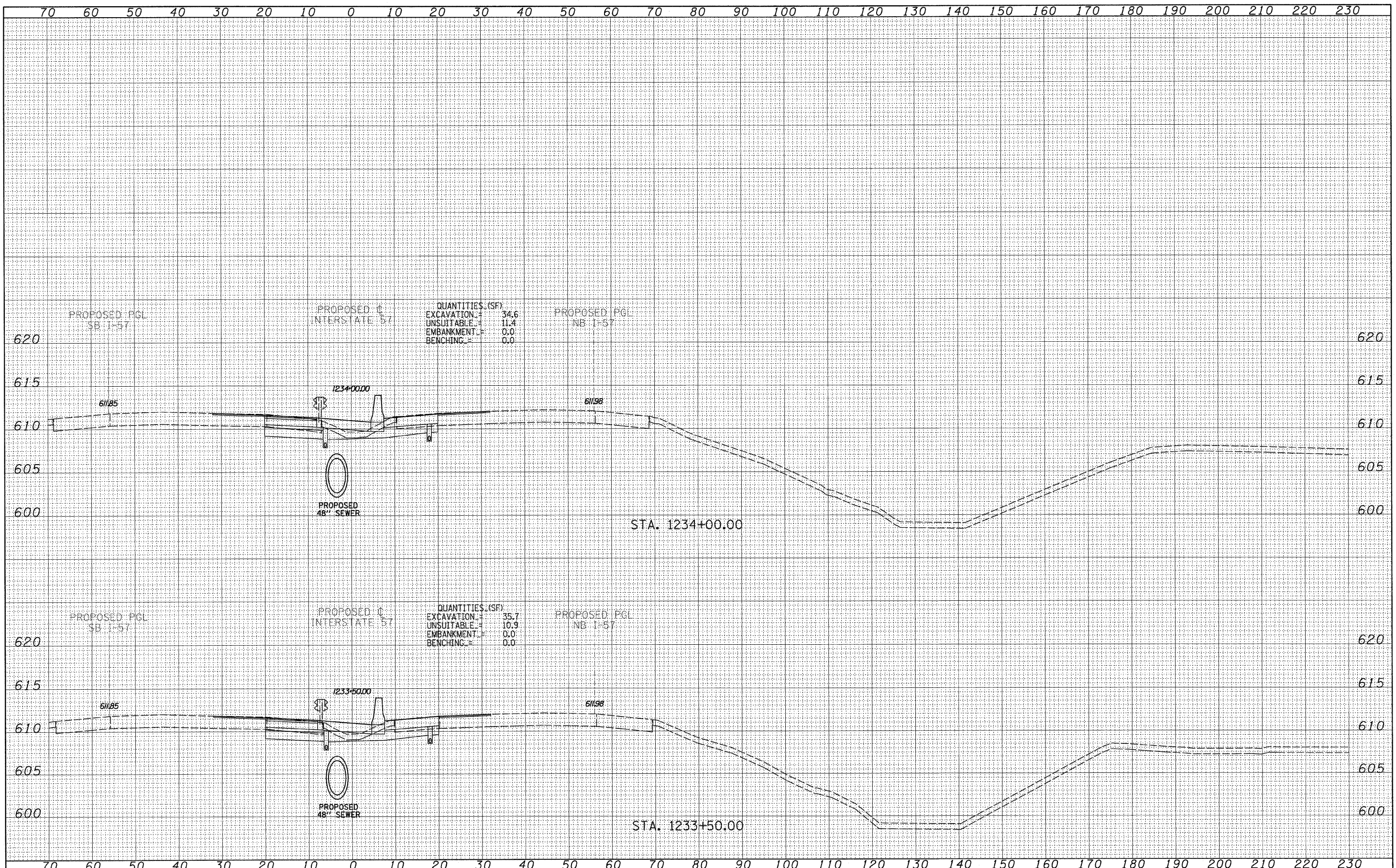


DATE	
BY	
SURVEYED	
PLOTTED	
TEMPLATE	
NOTE BOOK	
AREAS CHECKED	
NO.	

DATE	
BY	
SURVEYED	
PLOTTED	
TEMPLATE	
NOTE BOOK	
AREAS CHECKED	
NO.	



TYLIN INTERNATIONAL	USER NAME =	DESIGNED - JDF	REVISED -	STATE OF ILLINOIS DEPARTMENT OF TRANSPORTATION	I-57 AT I-294 INTERCHANGE PROJECT			F.A.I. RTE.	SECTION	COUNTY	TOTAL SHEETS	SHEET NO.
	PLOT SCALE =	DRAWN - JDF	REVISED -		PROPOSED I-57 CROSS SECTIONS			57	1414.2B	COOK	516	470
	PLOT DATE =	CHECKED - JPM	REVISED -		SCALE: $\frac{1"}{40'} = \frac{10"}{480'} = \frac{1"}{48'} = \frac{10"}{480'}$			SHEET NO. OF SHEETS		CONTRACT NO. 60J27		
		DATE - 3/18/2010	REVISED -		STA. 1233+50.00 TO STA. 1234+00.00			FED. ROAD DIST. NO. ILLINOIS FED. AID PROJECT				