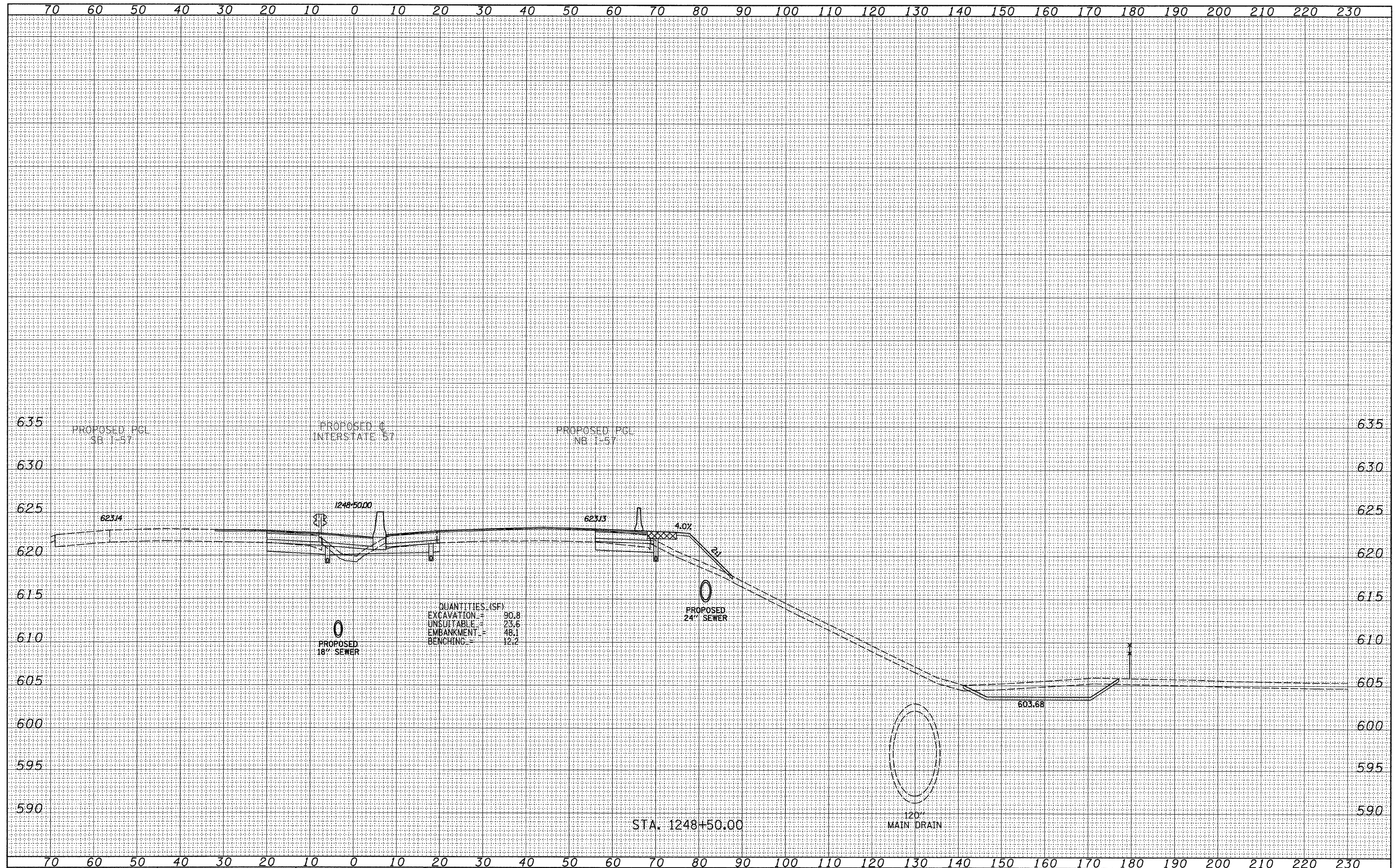


FINAL SURVEY	SURVEYED	DATE
NOTE BOOK	PLOTTED	BY
NO.	DATE	
	AREAS	CHECKED

ORIGINAL SURVEY	SURVEYED	DATE
NOTE BOOK	PLOTTED	BY
NO.	DATE	
	AREAS	CHECKED



QUANTITIES (SF)
 EXCAVATION = 90.8
 UNSUITABLE = 23.6
 EMBANKMENT = 48.1
 BENCHING = 12.2

TYLIN INTERNATIONAL

USER NAME =	DESIGNED - JDF	REVISED - 4/29/2010
PLLOT SCALE =	DRAWN - JDF	REVISED -
PLLOT DATE =	CHECKED - JPM	REVISED -
	DATE - 3/18/2010	REVISED -

**STATE OF ILLINOIS
 DEPARTMENT OF TRANSPORTATION**

**I-57 AT I-294 INTERCHANGE PROJECT
 PROPOSED I-57 CROSS SECTIONS**
 SCALE: 1" = 10' H
 SHEET NO. OF SHEETS STA. 1248+50.00 TO STA. 1248+50.00

F.A.I. RTE.	SECTION	COUNTY	TOTAL SHEETS	SHEET NO.
57	1414.2B	COOK	516	488
FED. ROAD DIST. NO.			ILLINOIS FED. AID PROJECT	
			CONTRACT NO. 60J27	

P:\602540(57-294)\Road\PI.157 BR\PI.157XS_SHT_R.dgn