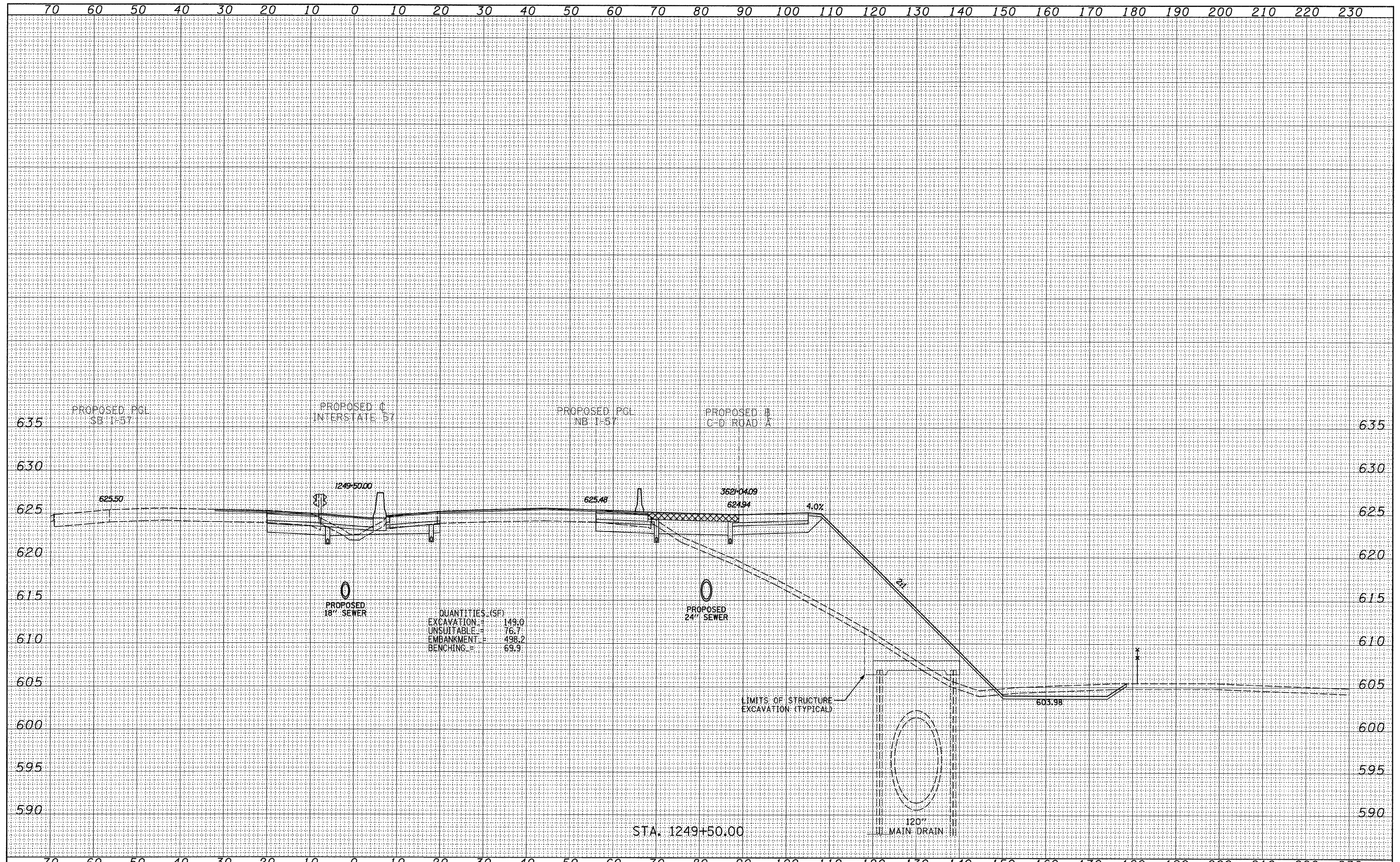


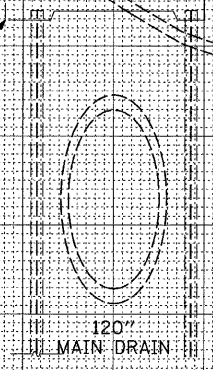
FINAL SURVEY	SURVEYED	DATE
NOTE BOOK	PLOTTED	BY
NO.	DATE	
	AREAS CHECKED	

ORIGINAL SURVEY	SURVEYED	DATE
NOTE BOOK	PLOTTED	BY
NO.	DATE	
	AREAS CHECKED	



QUANTITIES (SF)

EXCAVATION	=	149.0
UNSUITABLE	=	76.7
EMBANKMENT	=	498.2
BENCHING	=	69.9



<b>TYLIN INTERNATIONAL</b> USER NAME = PLOT SCALE = PLOT DATE =	DESIGNED - JDF	REVISED - 4/23/2010	<b>STATE OF ILLINOIS</b> <b>DEPARTMENT OF TRANSPORTATION</b>	<b>I-57 AT I-294 INTERCHANGE PROJECT</b> <b>PROPOSED I-57 CROSS SECTIONS</b>		F.A.I. RTE. 57	SECTION 1414.2B	COUNTY COOK	TOTAL SHEETS 516	SHEET NO. 490
	DRAWN - JDF	REVISED -		SCALE: 1" = 10' H	SHEET NO. OF SHEETS	STA. 1249+50.00 TO STA. 1249+50.00	FED. ROAD DIST. NO.	ILLINOIS FED. AID PROJECT	CONTRACT NO. 60J27	
	CHECKED - JPM	REVISED -								
	DATE - 3/18/2010	REVISED -								

P:\602540(57-294)\Road\PI.157 BR\PI.57XS\_SHT\_R.dgn