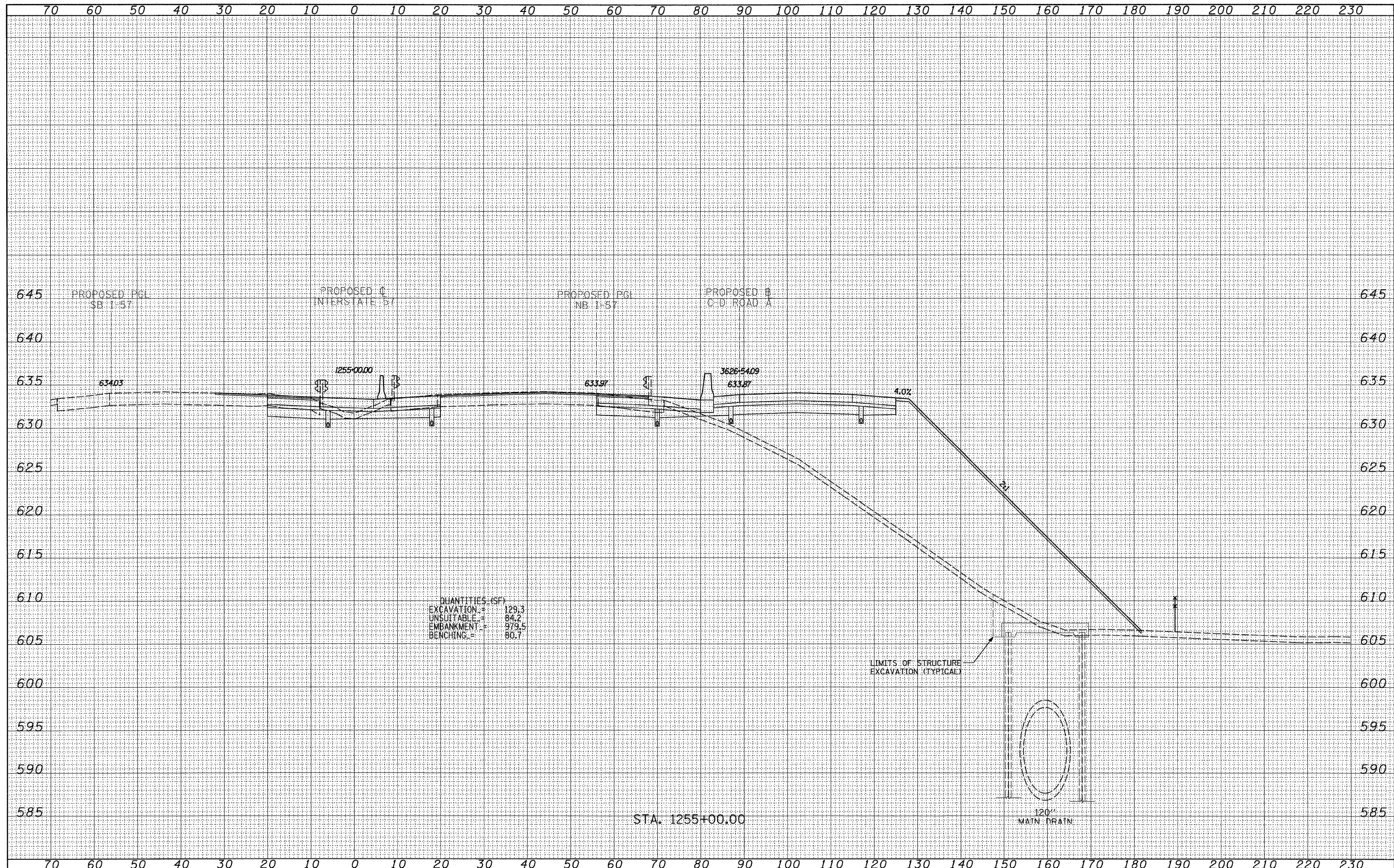


DATE	
BY	
SURVEYED	
PLOTTED	
NOTE BOOK	
AREAS CHECKED	
NO.	

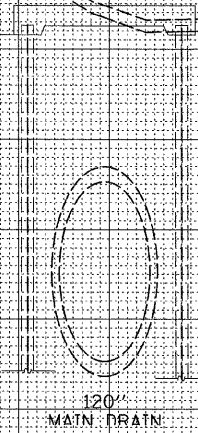
DATE	
BY	
SURVEYED	
PLOTTED	
NOTE BOOK	
AREAS CHECKED	
NO.	



QUANTITIES (SF)

EXCAVATION	=	129.3
UNSUITABLE	=	84.2
EMBANKMENT	=	979.5
BENCHING	=	80.7

LIMITS OF STRUCTURE EXCAVATION (TYPICAL)



STA. 1255+00.00

TYLIN INTERNATIONAL USER NAME = PLOT SCALE = PLOT DATE =	DESIGNED - JDF DRAWN - JDF CHECKED - JPM DATE - 3/18/2010	REVISED - 4/29/2010 REVISED - REVISED - REVISED -	STATE OF ILLINOIS DEPARTMENT OF TRANSPORTATION	I-57 AT I-294 INTERCHANGE PROJECT PROPOSED I-57 CROSS SECTIONS		F.A.I. RTE. 57 SECTION 1414.2B COUNTY COOK FEDERAL ROAD DIST. NO. [ILLINOIS] FED. AID PROJECT	TOTAL SHEETS 516 SHEET NO. 501 CONTRACT NO. 60J27
	SCALE: 1" = 40' H SHEET NO. OF SHEETS STA. 1255+00.00 TO STA. 1255+00.00						

P:\602540(57-294)\Road\PI_157 BR\PI_57XS_SHT_R.dgn