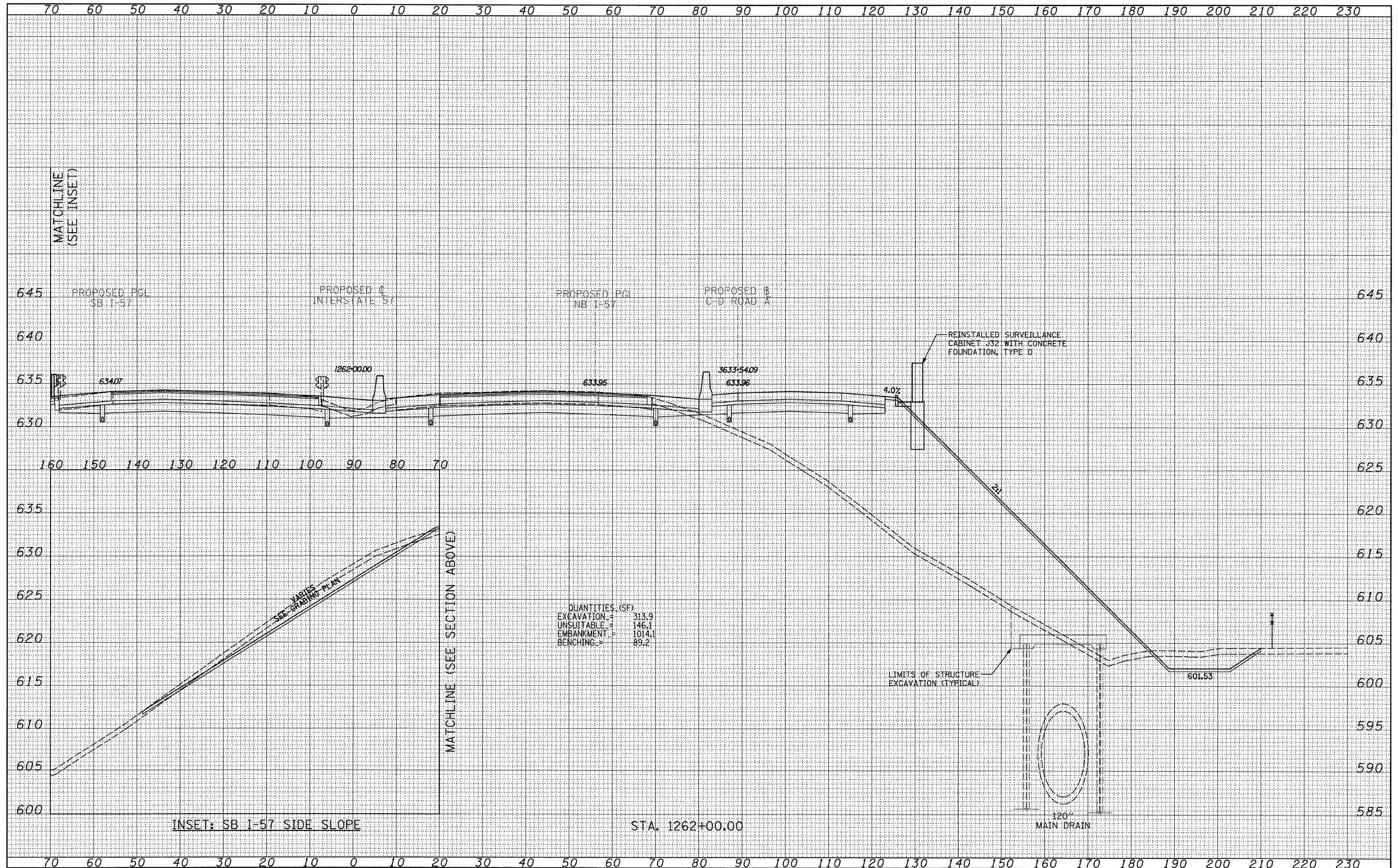


DATE	
BY	
FINAL SURVEY	
NO. OF SHEETS	
NO. OF SHEETS CHECKED	
NO.	

DATE	
BY	
ORIGINAL SURVEY	
NO. OF SHEETS	
NO. OF SHEETS CHECKED	
NO.	



INSET: SB I-57 SIDE SLOPE

STA. 1262+00.00

LIMITS OF STRUCTURE EXCAVATION (TYPICAL)

120" MAIN DRAIN

TYLIN INTERNATIONAL	USER NAME =	DESIGNED - JDF	REVISED - 4/29/2010	STATE OF ILLINOIS DEPARTMENT OF TRANSPORTATION	I-57 AT I-294 INTERCHANGE PROJECT			F.A.I. RTE.	SECTION	COUNTY	TOTAL SHEETS	SHEET NO.
	PLOT SCALE =	DRAWN - JDF	REVISED -		57	1414.2B	COOK	516	505			
	PLOT DATE =	CHECKED - JPM	REVISED -		CONTRACT NO. 60J27			FED. ROAD DIST. NO. ILLINOIS FED. AID PROJECT				
		DATE - 3/18/2010	REVISED -		SCALE: 1" = 10' H	SHEET NO. OF SHEETS	STA. 1262+00.00 TO STA. 1262+00.00					

P:\602540(57-294)\Road\PI\_157 BR\PI\_157XS\_SHT\_R.dgn