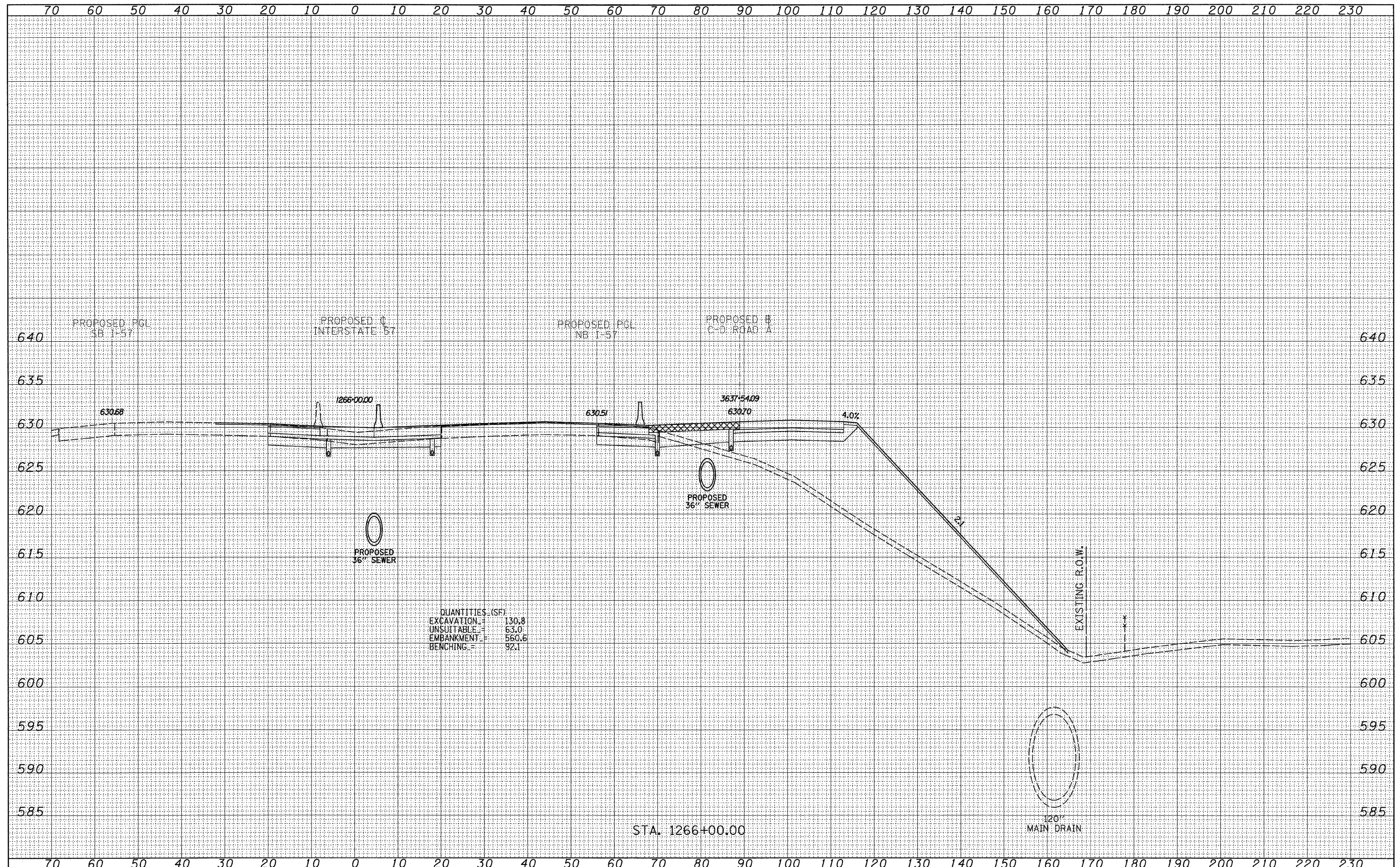


DATE	
BY	
SURVEYED	
PLOTTED	
NOTE BOOK	
AREAS CHECKED	

DATE	
BY	
SURVEYED	
PLOTTED	
NOTE BOOK	
AREAS CHECKED	



QUANTITIES (SF):  
 EXCAVATION = 130.8  
 UNSUITABLE = 63.0  
 EMBANKMENT = 560.6  
 BENCHING = 92.1

STA. 1266+00.00

120\"/>

<b>TYLIN INTERNATIONAL</b> USER NAME = PLOT SCALE = PLOT DATE =	DESIGNED - JDF	REVISED - 4/29/2010	<b>STATE OF ILLINOIS</b> <b>DEPARTMENT OF TRANSPORTATION</b>		<b>I-57 AT I-294 INTERCHANGE PROJECT</b> <b>PROPOSED I-57 CROSS SECTIONS</b>		F.A.I. RTE. 57	SECTION 1414.2B	COUNTY COOK	TOTAL SHEETS 516	SHEET NO. 513
	DRAWN - JDF	REVISED -					CONTRACT NO. 60J27				
	CHECKED - JPM	REVISED -					FED. ROAD DIST. NO. ILLINOIS FED. AID PROJECT				
	DATE - 3/18/2010	REVISED -					SCALE: 1" = 40' H				
			SHEET NO. OF SHEETS		STA. 1266+00.00 TO STA. 1266+00.00						

P:\602540(57-294)\Road\PI\_157 BR\PI\_57XS\_SHT\_R.dgn