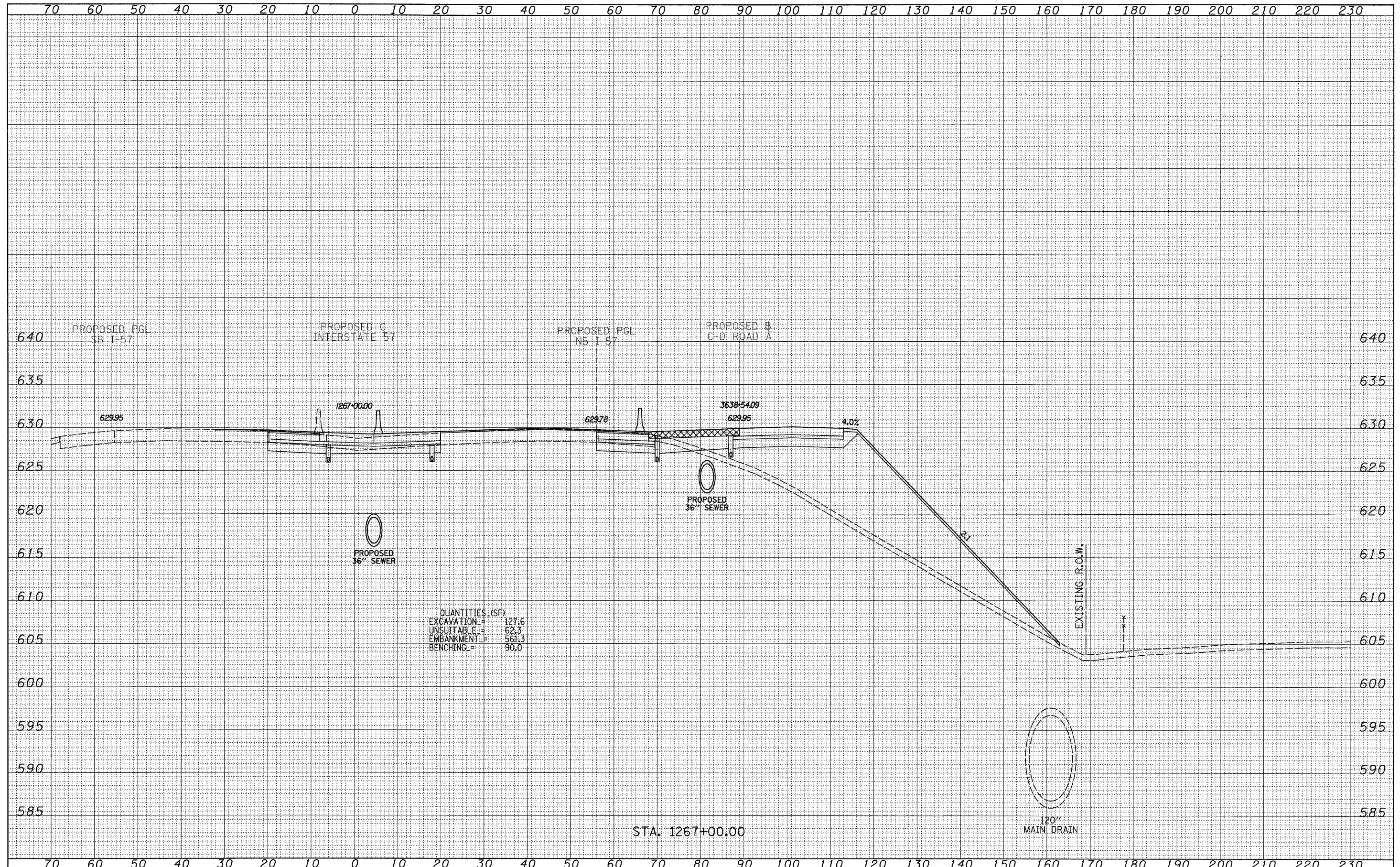


DATE	
BY	
SURVEYED	
PLOTTED	
NOTE BOOK	
AREAS CHECKED	
NO.	

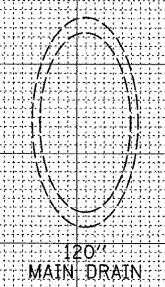
DATE	
BY	
SURVEYED	
PLOTTED	
NOTE BOOK	
AREAS CHECKED	
NO.	



QUANTITIES (SF)

EXCAVATION	=	127.6
UNSUITABLE	=	62.3
EMBANKMENT	=	561.3
BENCHING	=	90.0

STA. 1267+00.00



**TYLIN INTERNATIONAL**

USER NAME =	DESIGNED - JDF	REVISED - 4/29/2010
PLLOT SCALE =	DRAWN - JDF	REVISED -
PLLOT DATE =	CHECKED - JPM	REVISED -
	DATE - 3/18/2010	REVISED -

**STATE OF ILLINOIS  
DEPARTMENT OF TRANSPORTATION**

**I-57 AT I-294 INTERCHANGE PROJECT  
PROPOSED I-57 CROSS SECTIONS**

SCALE: 1" = 10' V, 1" = 40' H

SHEET NO. OF SHEETS STA. 1267+00.00 TO STA. 1267+00.00

F.A.I. RTE.	SECTION	COUNTY	TOTAL SHEETS	SHEET NO.
57	1414.2B	COOK	516	515
CONTRACT NO. 60J27				
FED. ROAD DIST. NO. ILLINOIS FED. AID PROJECT				

P:\602540(57-294)\Road\PI\_157 BR\PI\_57XS\_SHT\_R.dgn