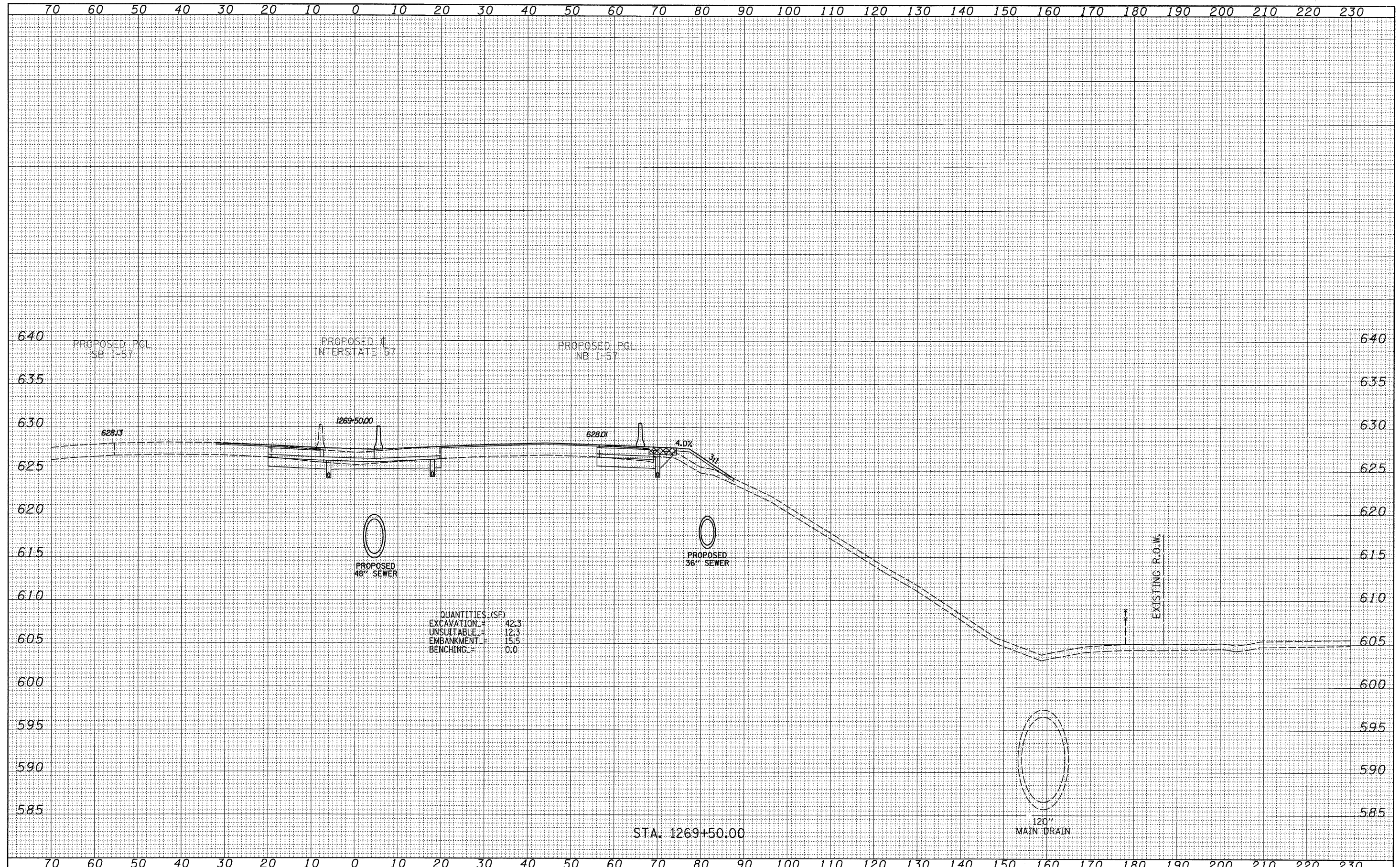


DATE	
BY	
SURVEYED	
PLOTTED	
NOTE DATE	
AREAS CHECKED	
FINAL SURVEY	
NOTE BOOK	
NO.	

DATE	
BY	
SURVEYED	
PLOTTED	
NOTE DATE	
AREAS CHECKED	
ORIGINAL SURVEY	
NOTE BOOK	
NO.	



QUANTITIES (SF)

EXCAVATION	=	42.3
UNSUITABLE	=	12.3
EMBANKMENT	=	15.5
BENCHING	=	0.0

STA. 1269+50.00

TYLIN INTERNATIONAL

USER NAME =	DESIGNED - JDF	REVISED - 4/29/2010
PLLOT SCALE =	DRAWN - JDF	REVISED -
PLLOT DATE =	CHECKED - JPM	REVISED -
	DATE - 3/18/2010	REVISED -

**STATE OF ILLINOIS
DEPARTMENT OF TRANSPORTATION**

**I-57 AT I-294 INTERCHANGE PROJECT
PROPOSED I-57 CROSS SECTIONS**

SCALE: 1" = 10' H

SHEET NO. OF SHEETS STA. 1269+50.00 TO STA. 1269+50.00

F.A.T. RTE.	SECTION	COUNTY	TOTAL SHEETS	SHEET NO.
57	1414.2B	COOK	516	516D
CONTRACT NO. 60J27				
FED. ROAD DIST. NO. ILLINOIS FED. AID PROJECT				

P:\602540(67-294)\Road\PI_167 BR\PI_57XS_SHT_R.dgn