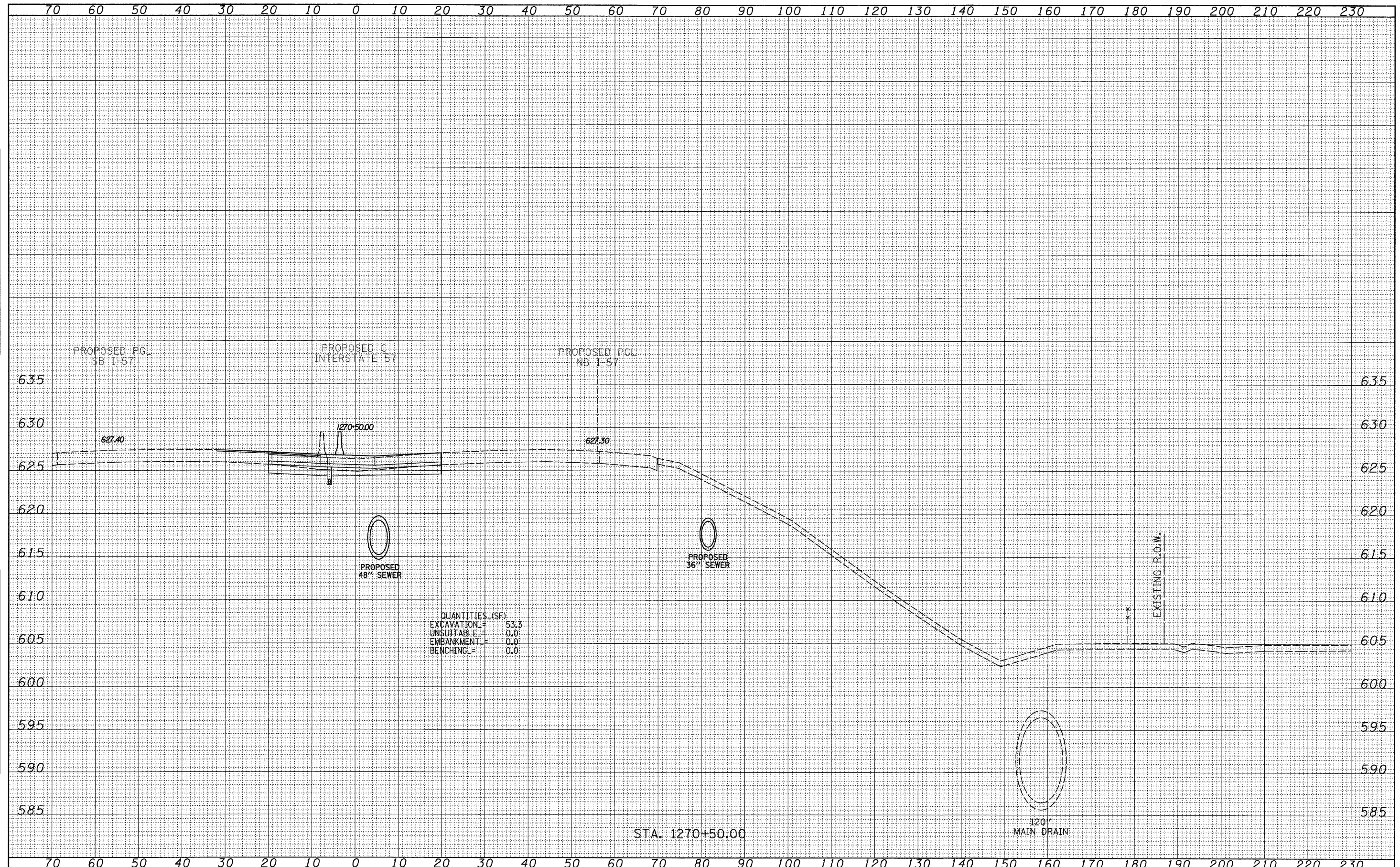


DATE	
BY	
SURVEYED	
PLOTTED	
NOTE BOOK	
AREAS CHECKED	
NO.	

DATE	
BY	
SURVEYED	
PLOTTED	
NOTE BOOK	
AREAS CHECKED	
NO.	



QUANTITIES (SF)
 EXCAVATION = 53.3
 UNSUITABLE = 0.0
 EMBANKMENT = 0.0
 BENCHING = 0.0

STA. 1270+50.00

120\"/>

EXISTING R.O.W.

TYLIN INTERNATIONAL	USER NAME =	DESIGNED - JDF	REVISED - 4/29/2010	STATE OF ILLINOIS DEPARTMENT OF TRANSPORTATION	I-57 AT I-294 INTERCHANGE PROJECT			F.A.I. RTE. =	SECTION	COUNTY	TOTAL SHEETS	SHEET NO.
	PLOT SCALE =	DRAWN - JDF	REVISED -		57	1414.2B	COOK	516	516F			
	PLOT DATE =	CHECKED - JPM	REVISED -		PROPOSED I-57 CROSS SECTIONS			CONTRACT NO. 60J27				
	DATE - 3/18/2010	REVISED -	SCALE: 1" = 10' V, 1" = 50' H		SHEET NO. OF SHEETS	STA. 1270+50.00 TO STA. 1270+50.00	FED. ROAD DIST. NO.	ILLINOIS FED. AID PROJECT				