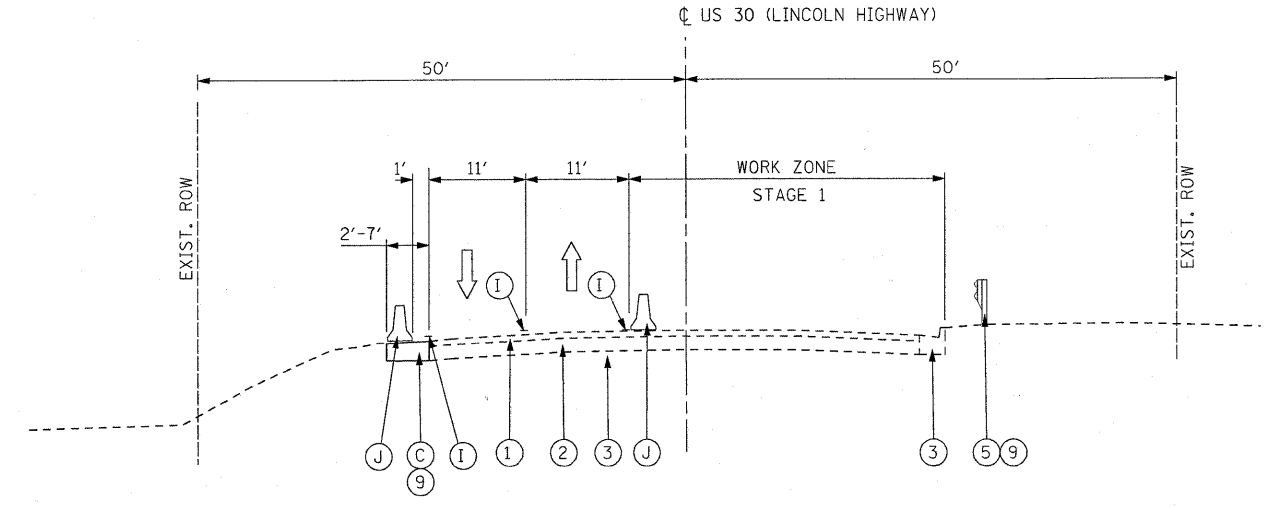


EXISTING TYPICAL SECTION
US 30 (LINCOLN HIGHWAY)
WEST OF BRIDGE



PROPOSED TYPICAL SECTION
TEMPORARY PAVEMENT
FOR MAINTENANCE OF TRAFFIC (STAGE 1)
US 30 (LINCOLN HIGHWAY)
WEST OF BRIDGE

LEGEND

EXISTING CONDITIONS

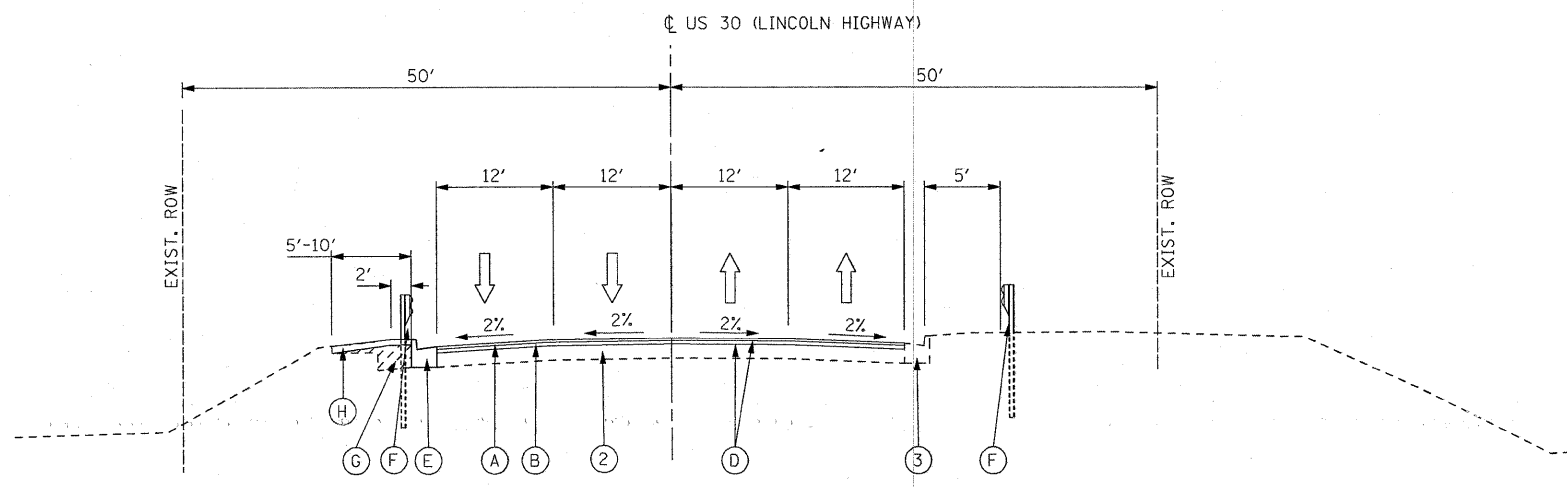
- ① HMA SURFACE
- ② BASE COURSE
- ③ COMB. CONC. C&G TYPE B-6.24
- ④ AGGREGATE SHOULDER
- ⑤ STEEL PLATE BEAM GUARDRAIL TO BE REMOVED
- ⑥ COMB. CONC. C&G TO BE REMOVED
- ⑦ EARTH EXCAVATION
- ⑧ HOT-MIX ASPHALT SURFACE REMOVAL, 2"
- ⑨ PAVEMENT REMOVAL

PROPOSED CONDITIONS

- Ⓐ HOT-MIX ASPHALT SURFACE COURSE, MIX "D", N70 (2")
- Ⓑ LEVELING BINDER (MACHINE METHOD), N70 (2" - 4")
- Ⓒ TEMPORARY PAVEMENT 10" (SEE NOTES 1 & 2)
- Ⓓ BITUMINOUS MATERIAL (PRIME COAT) AGGREGATE (PRIME COAT)
- Ⓔ COMBINATION CONCRETE CURB & GUTTER, TYPE B-6.24
- Ⓕ STEEL PLATE BEAM GUARDRAIL, TYPE A
- Ⓖ FURNISHED EXCAVATION
- Ⓗ PARKWAY/DITCH RESTORATION -TOPSOIL FURNISH AND PLACE, 4 INCH -SEEDING, TYPE 2A
- Ⓘ TEMPORARY PAVEMENT MARKING
- ⓵ TEMPORARY CONCRETE BARRIER

NOTES

1. THE CROSS SLOPE OF THE TEMPORARY PAVEMENT SHALL MATCH THE CROSS SLOPE OF THE EXISTING PAVEMENT (OR AS DIRECTED BY THE ENGINEER).
2. THE TEMPORARY PAVEMENT 10" WILL BE COMPRISED OF:
8 1/2" HOT-MIX ASPHALT BINDER IL-19MM &
1 1/2" HOT MIX ASPHALT SURFACE COURSE, MIX "D", N50 (IL-9.5MM)



PROPOSED TYPICAL SECTION
US 30 (LINCOLN HIGHWAY)
WEST OF BRIDGE

FILE NAME =
#FILE#



DESIGNED	RJD	REVISED	- 5/6/2010 RJD
DRAWN	RJD	REVISED	-
CHECKED	TWL	REVISED	-
DATE	4/20/2010	REVISED	-

**STATE OF ILLINOIS
DEPARTMENT OF TRANSPORTATION**

**TYPICAL SECTIONS
US RTE 30 (LINCOLN HWY)**

SCALE: SHEET NO. OF SHEETS STA. TO STA.

F.A.P. RTE.	SECTION	COUNTY	TOTAL SHEETS	SHEET NO.
353	11-5-B	COOK	39	5
CONTRACT NO. 60J44				
ILLINOIS FED. AID PROJECT				