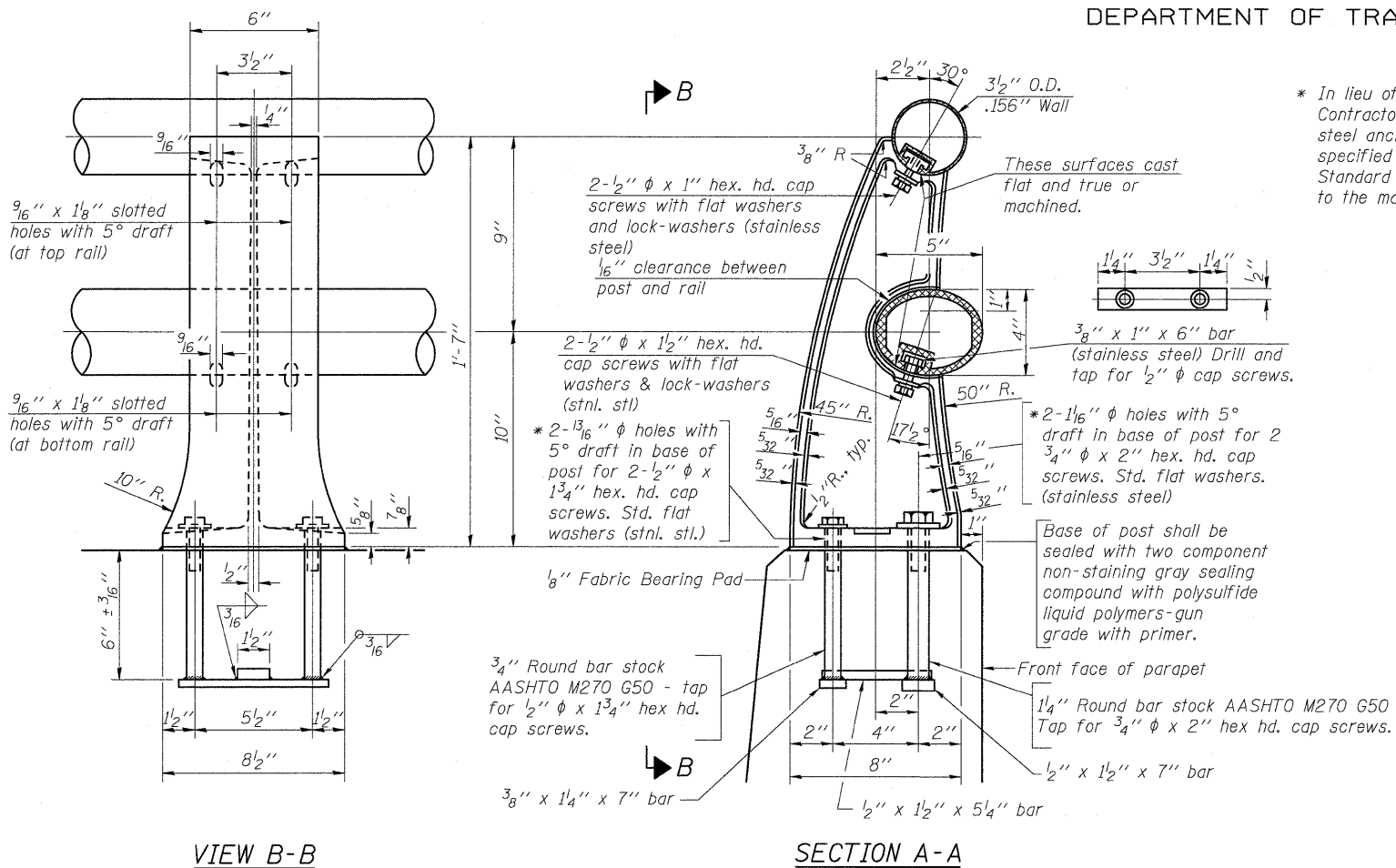
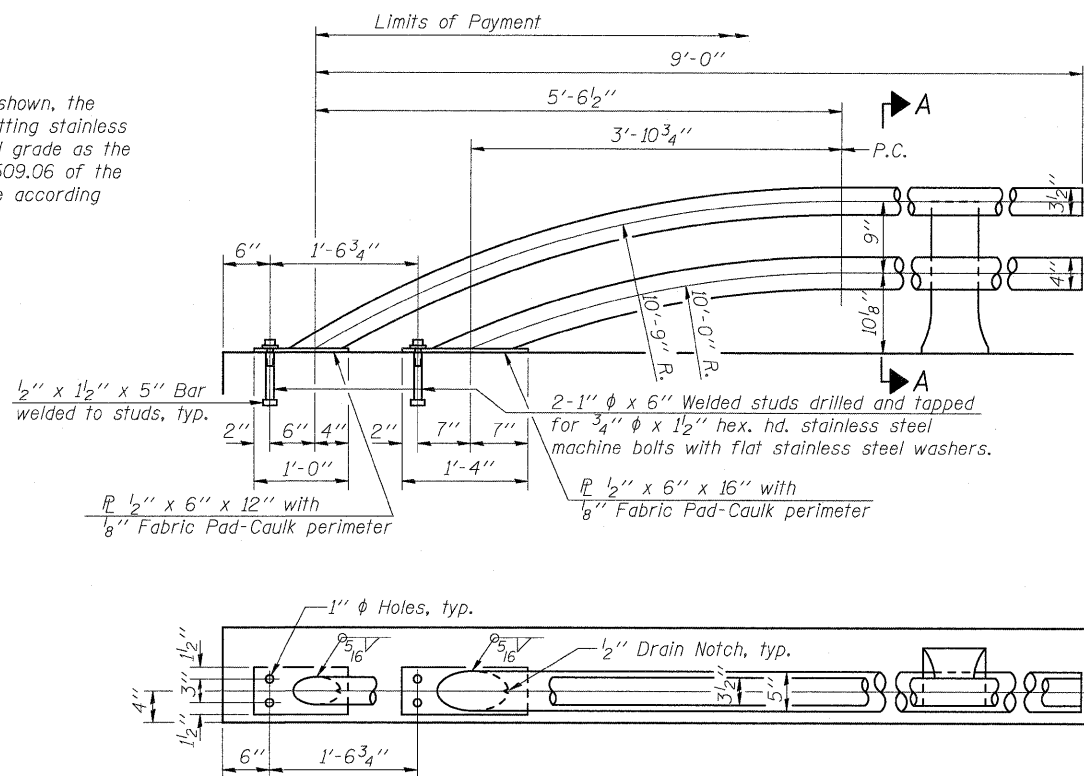
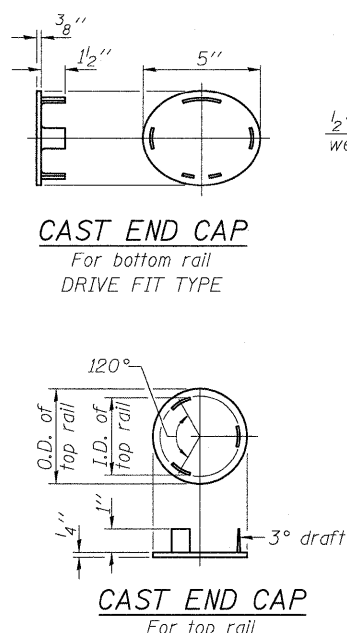


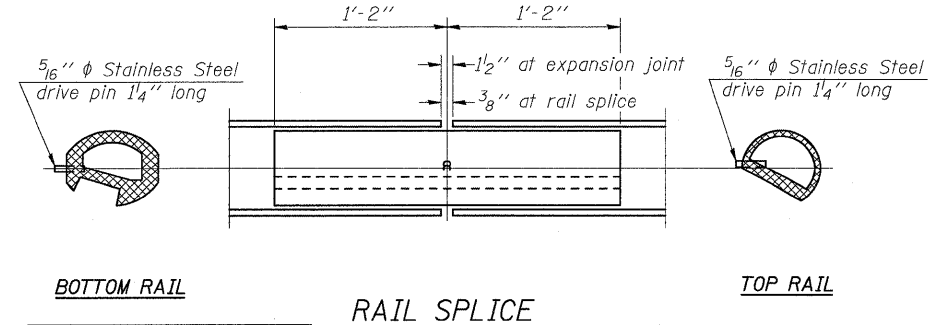
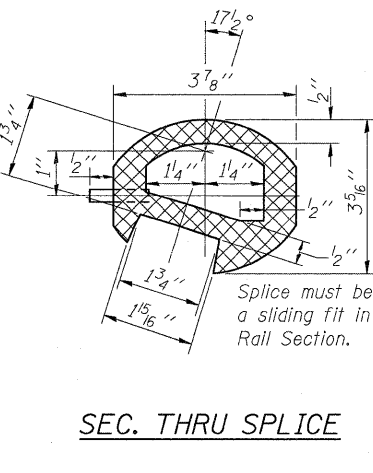
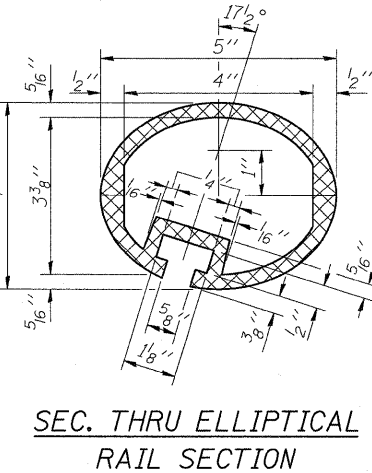
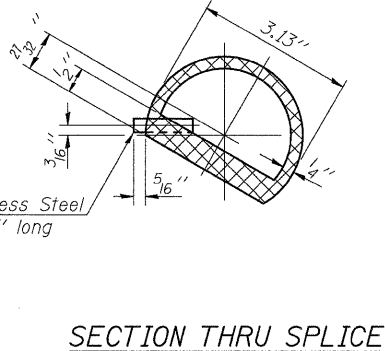
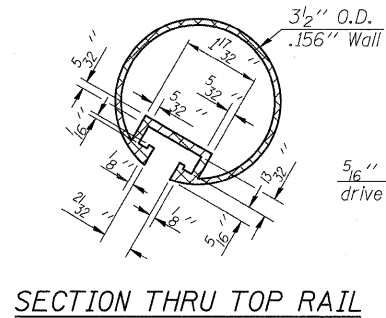
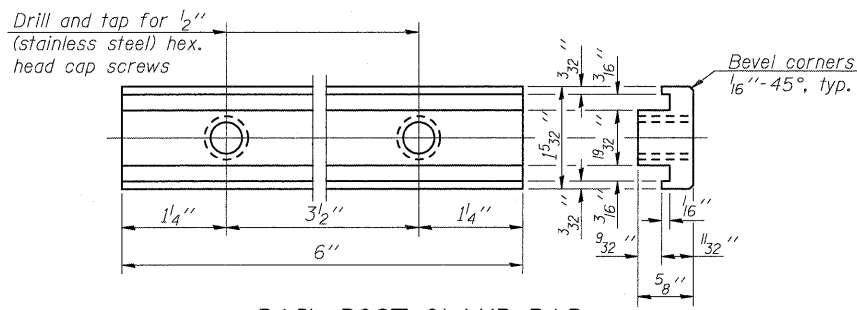
STATE OF ILLINOIS
DEPARTMENT OF TRANSPORTATION



* In lieu of the cast-in-place anchor device shown, the Contractor has the option of drilling and setting stainless steel anchor rods of the same diameter and grade as the specified cap screws according to Article 509.06 of the Standard Specifications. Embedment shall be according to the manufacturer's specifications.



Note:
The end rail post shall be set back as required for the terminal rail section.



RAIL END TREATMENT FOR TYPE 5 AND 6 TERMINAL

Notes:
 All Posts shall be normal to parapet.
 All joints in rail shall be spliced per detail.
 All exposed rail ends shall be capped per detail.
 Provide 1-1/8" and 2-1/16" Aluminum Shims for 25% of the Posts. Rail elements shall be parallel to Grade-high spots will be ground and low spots shimmed.
 See sheet S10 of S18 for rail post spacing.

BILL OF MATERIAL

Item	Unit	Quantity
Aluminum Railing, Type L	Foot	25

ALUMINUM RAILING, TYPE L STRUCTURE NO.016-2503

DESIGNED JPM
CHECKED TG
DRAWN MPS
CHECKED JPM, TG



SHEET NO. S13	F.A.P. RTE. 353	SECTION 11-5-B	COUNTY COOK	TOTAL SHEETS 39	SHEET NO. 25
S18 SHEETS		CONTRACT NO. 60J44		ILLINOIS FED. AID PROJECT	