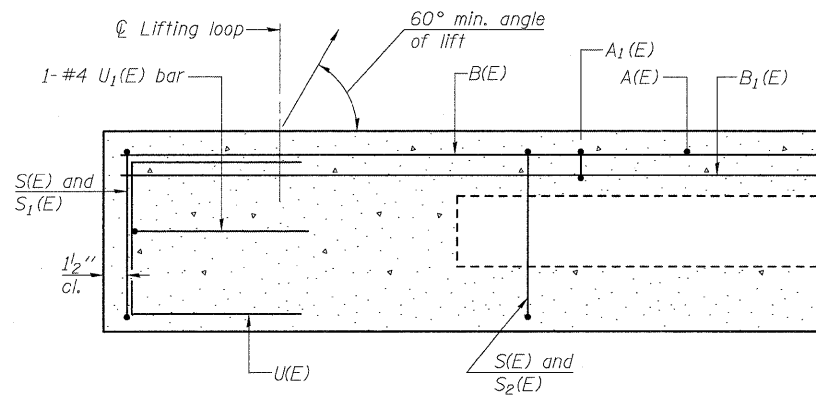
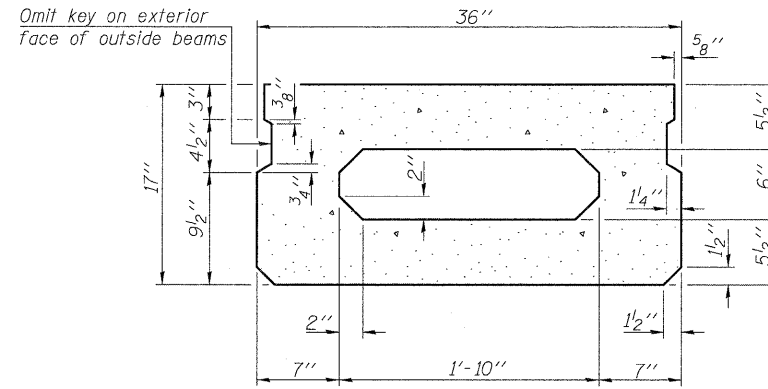


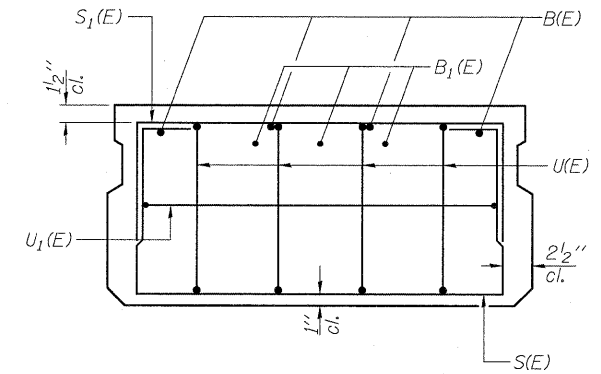
STATE OF ILLINOIS
DEPARTMENT OF TRANSPORTATION



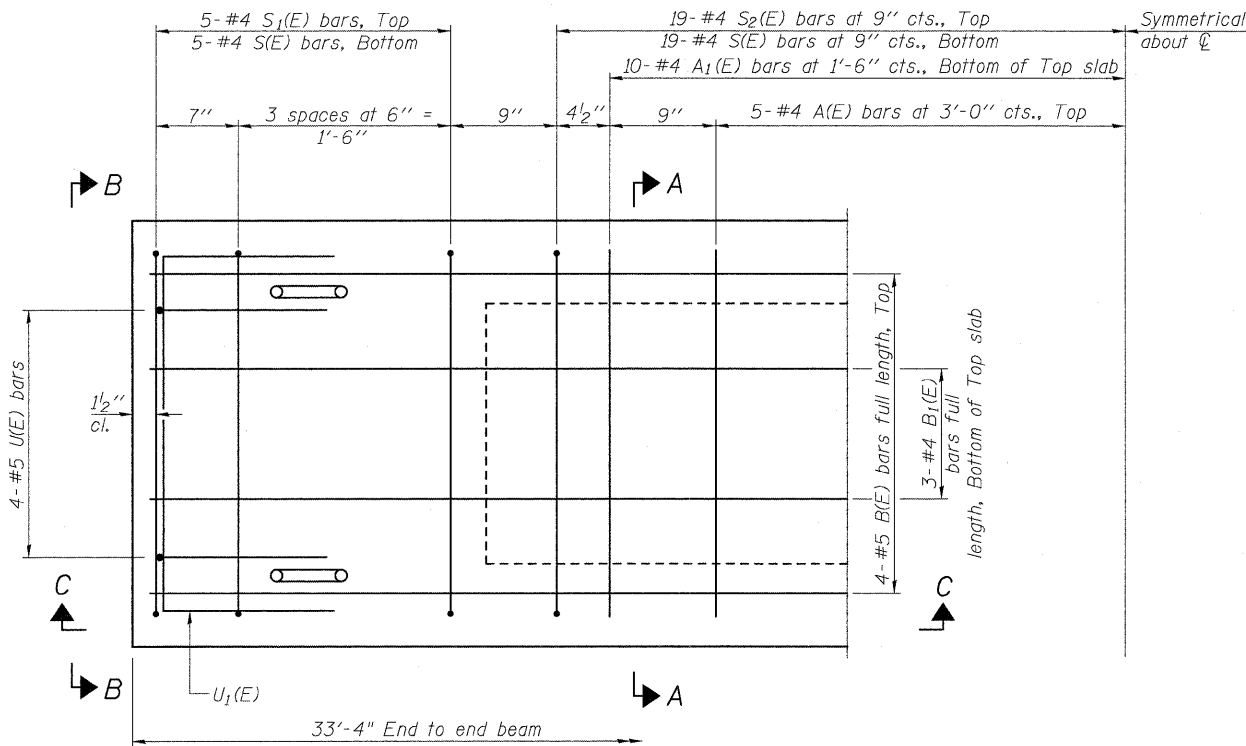
SECTION C-C



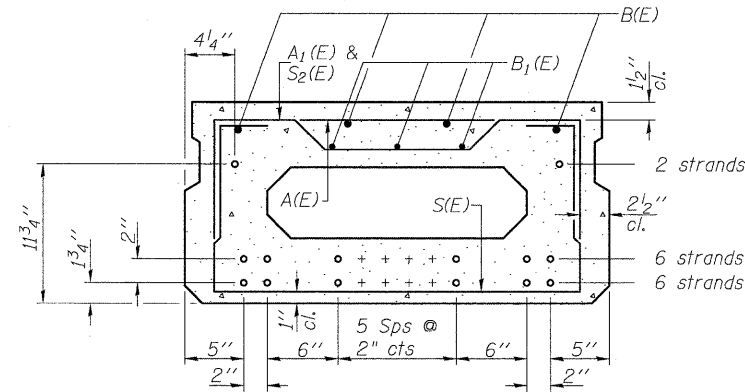
SECTION A-A
(Showing dimensions)



VIEW B-B



PLAN VIEW



SECTION A-A
(Showing reinforcement and permissible strand locations)

Note: Place the number of strands specified in each row symmetrically about the centerline of beam in the permissible strand locations shown.

MINIMUM BAR LAP
#4 bar = 2'-0"
#5 bar = 2'-6"

BAR LIST
ONE BEAM ONLY
(For information only)

Bar	No.	Size	Length	Shape
A(E)	11	#4	2'-7"	—
A1(E)	19	#4	2'-10"	—
B(E)	4	#5	33'-1"	—
B1(E)	3	#4	33'-1"	—
S(E)	47	#4	5'-9"	□
S1(E)	10	#4	4'-3"	□
S2(E)	37	#4	4'-6"	□
U(E)	8	#5	3'-8"	□
U1(E)	2	#4	5'-0"	□

Note: See sheet S15 of S18 for additional details and Bill of Material.

Note: Spacing of S(E) and S2(E) bars may be adjusted up to 4" in the immediate area of the transverse tie diaphragms to miss the block outs for the transverse ties.

DESIGNED	JPM
CHECKED	TG
DRAWN	MPS
CHECKED	JPM, TG



100 S. WACKER DRIVE SUITE 700 • CHICAGO IL 60606 • P:312-686-8910 F:312-686-8415

17" X 36" PPC DECK BEAM
STRUCTURE NO. 016-2503

SHEET NO. S14	F.A.P. RTE.	SECTION	COUNTY	TOTAL SHEETS	SHEET NO.
	353	11-5-B	COOK	39	26
S18 SHEETS		CONTRACT NO. 60J44			
ILLINOIS FED. AID PROJECT					