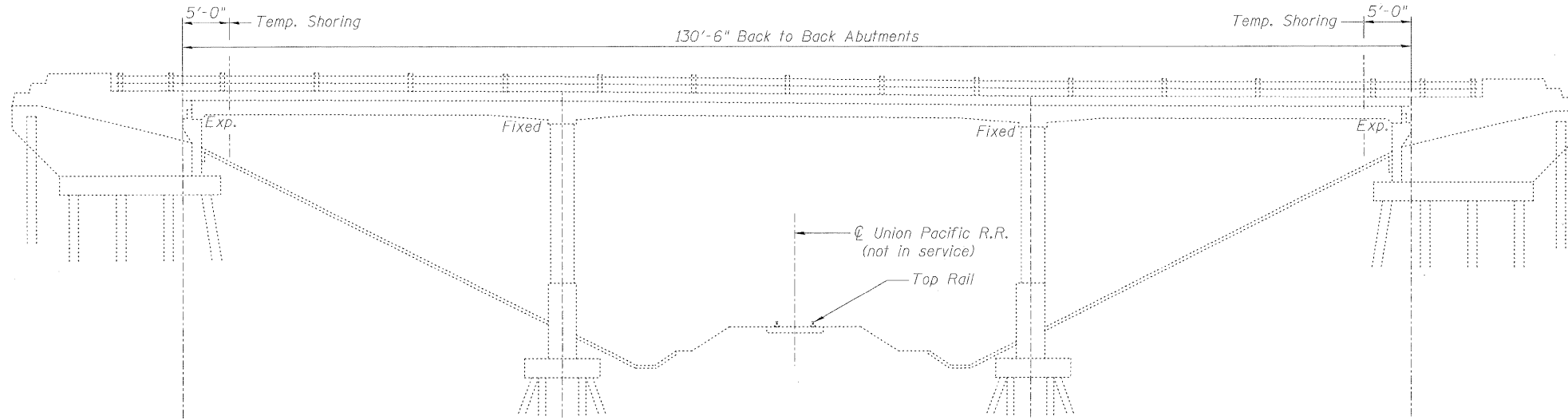


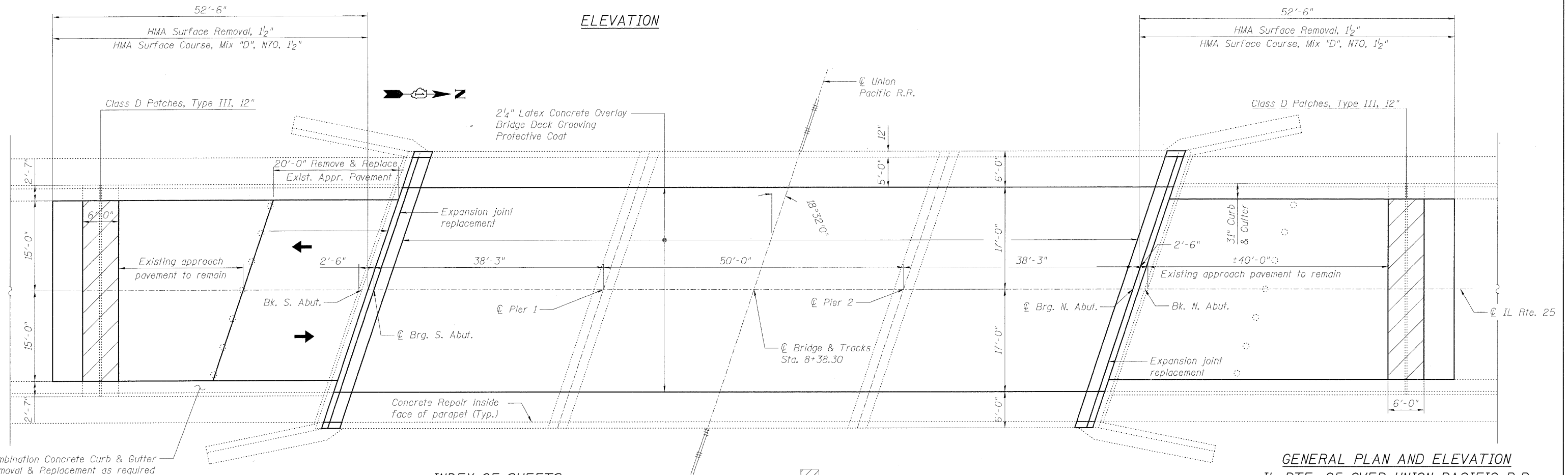
STATE OF ILLINOIS
DEPARTMENT OF TRANSPORTATION



REACTION TABLE FOR TEMP. SHORING	
R DL	5.0 kip/ft
Rs DL	0.5 kip/ft
R TOT	5.5 kip/ft

Reactions are unfactored dead load reactions per unit width of bridge deck. Since the road is to be closed and traffic detoured, live load is not included in the reactions shown above. The Contractor shall adjust the reactions as required to account for actual conditions and anticipated construction live load. The Contractor shall submit details and calculations for approval per the Special Provision "Temporary Shoring and Cribbing".

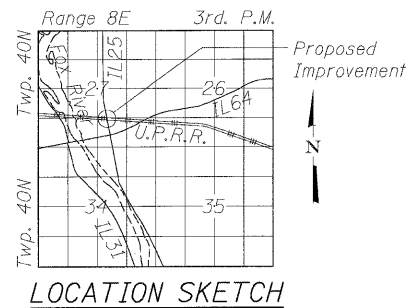
ELEVATION



PLAN

INDEX OF SHEETS:

1. General Plan and Elevation
2. General Notes and Bill of Material
3. Cross Section
4. Deck Repair Plan
5. Expansion Joint Removal
6. Expansion Joint Replacement
7. Preformed Joint Strip Seal
8. Rail Post Details
9. Parapet Repair
10. Substructure Repair
11. Bridge Approach Slab Details
12. Bridge Approach Slab Details
13. Approach Pavement Repair



DESIGNED	BRT
CHECKED	BJM
DRAWN	JNH
CHECKED	BJM

**GENERAL PLAN AND ELEVATION
IL RTE. 25 OVER UNION PACIFIC R.R.
F.A.U RTE. 2503 - SEC. 32-CS
KANE COUNTY
STATION 8+38.30
STRUCTURE NO. 045-0061**



Wight & Company
2500 North Frontage Road . Darien . IL 60561
630.969.7000 630.969.7979 fax
Design Firm Registration 184-000451

SHEET NO. 1 13 SHEETS	F.A.U. RTE.	SECTION	COUNTY	TOTAL SHEETS	SHEET NO.
	2503	39 EXT-VB-1	KANE	27	9
CONTRACT NO. 60J48					
FED. ROAD DIST. NO. _ ILLINOIS FED. AID PROJECT					

G:\ENG\06-5329-02 D1 Various Structure\CAD\450061\Sheet\0450061_001_GPE.dgn
1/28/2010 1:50:18 PM Default