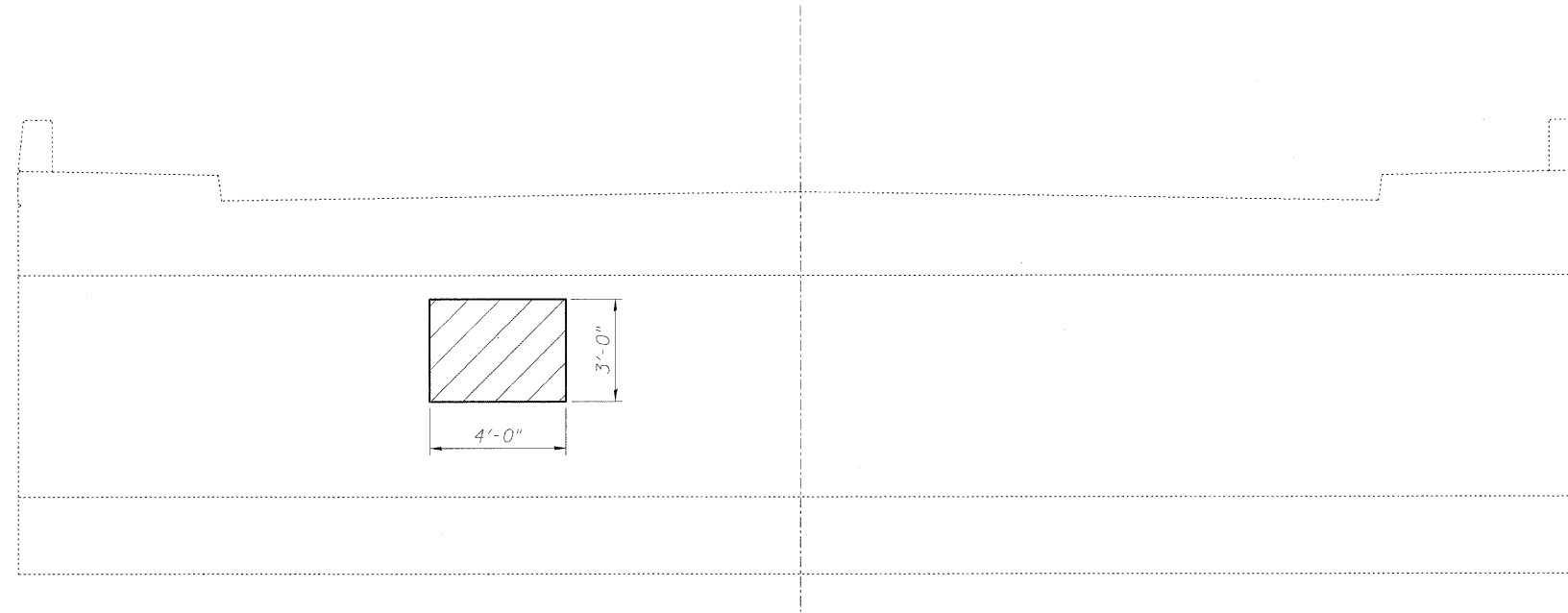


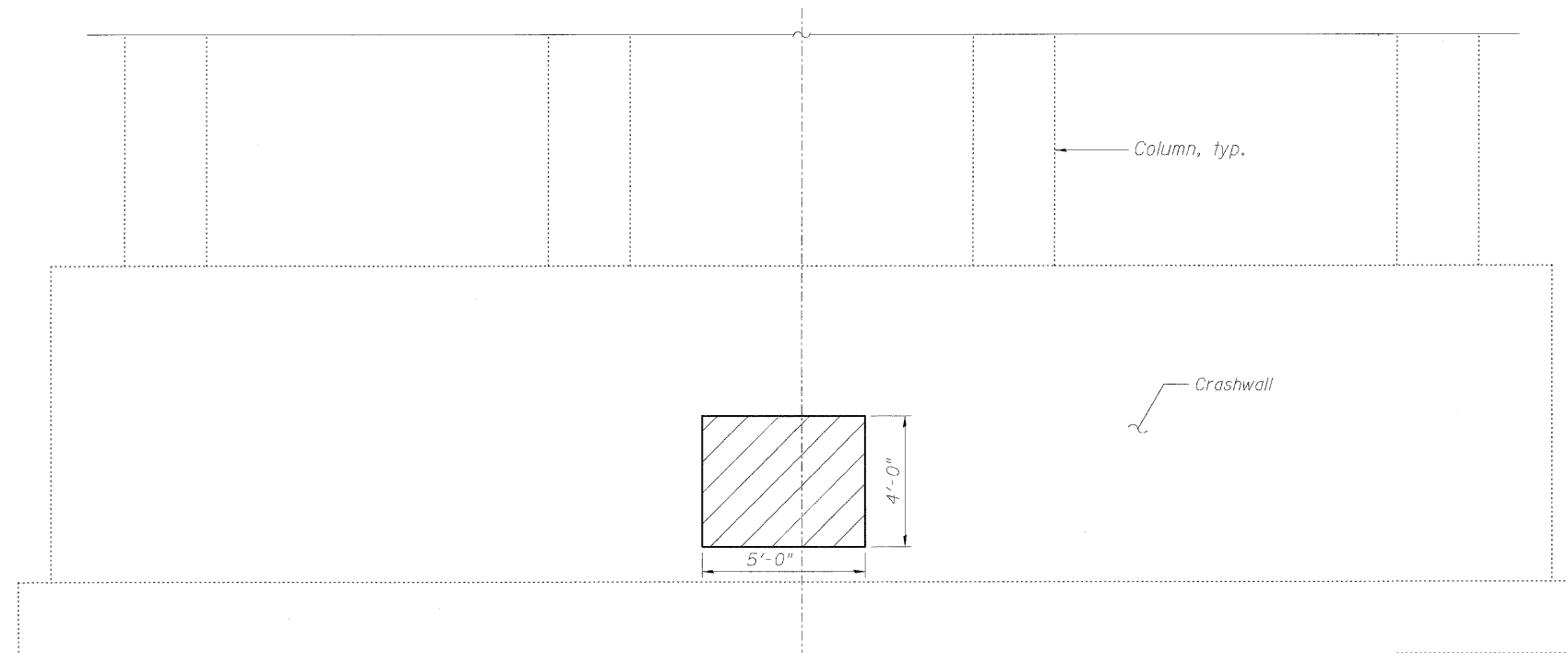
STATE OF ILLINOIS
DEPARTMENT OF TRANSPORTATION



NORTH ABUTMENT ELEVATION
(LOOKING NORTH)


NOTE:

The limits and locations of repair shown on this sheet are taken from the most recent survey performed by the District in October 2009.



PIER 2 ELEVATION
NORTH FACE

LEGEND:

 Structural Repair of Concrete
(Depth Less than or Equal to 5")

SUBSTRUCTURE REPAIR
STRUCTURE NO. 045-0061

DESIGNED	BRT
CHECKED	BJM
DRAWN	JNH
CHECKED	BJM



Wight & Company
2500 North Frontage Road . Darien . IL 60561
630.969.7000 630.969.7979 fax
Design Firm Registration 184-000451

SHEET NO. 10 13 SHEETS	F.A.U. RTE.	SECTION	COUNTY	TOTAL SHEETS	SHEET NO.
	2503	39 EXT-VB-1	KANE	27	18
			CONTRACT NO. 60J48		
FED. ROAD DIST. NO. _ ILLINOIS FED. AID PROJECT					