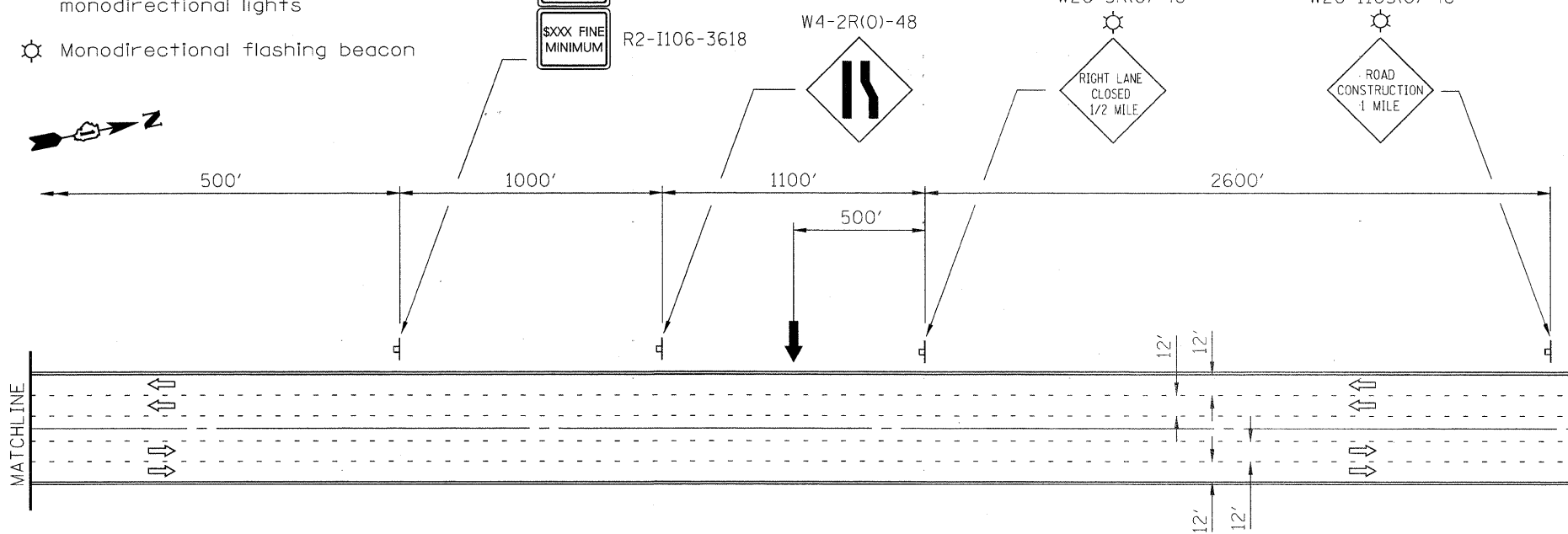


- SYMBOLS**
- Arrow board
 - Work area
 - Sign
 - Drum with steady burn monodirectional light
 - Direction indicator barricade with steady burn monodirectional light
 - Type II barricade with steady burn monodirectional light
 - Flexible delineator
 - Type III barricade with flashing monodirectional lights
 - Monodirectional flashing beacon

WORK ZONE
SPEED LIMIT
35
BEGINS
XXXX FINE MINIMUM

W2-1115(0)-3618
R2-1-3648
W2-1113(0)-3612
R2-1106-3618



GENERAL NOTES

This Standard is used where at any time, any vehicle, equipment, workers or their activities require the closure of two adjacent lanes and a temporary crossover is provided by making use of one lane of pavement normally used by opposing flow of traffic and flexible delineators are used to separate the opposing traffic.

Cones may be substituted for flexible delineators during daytime operations at half the spacing.