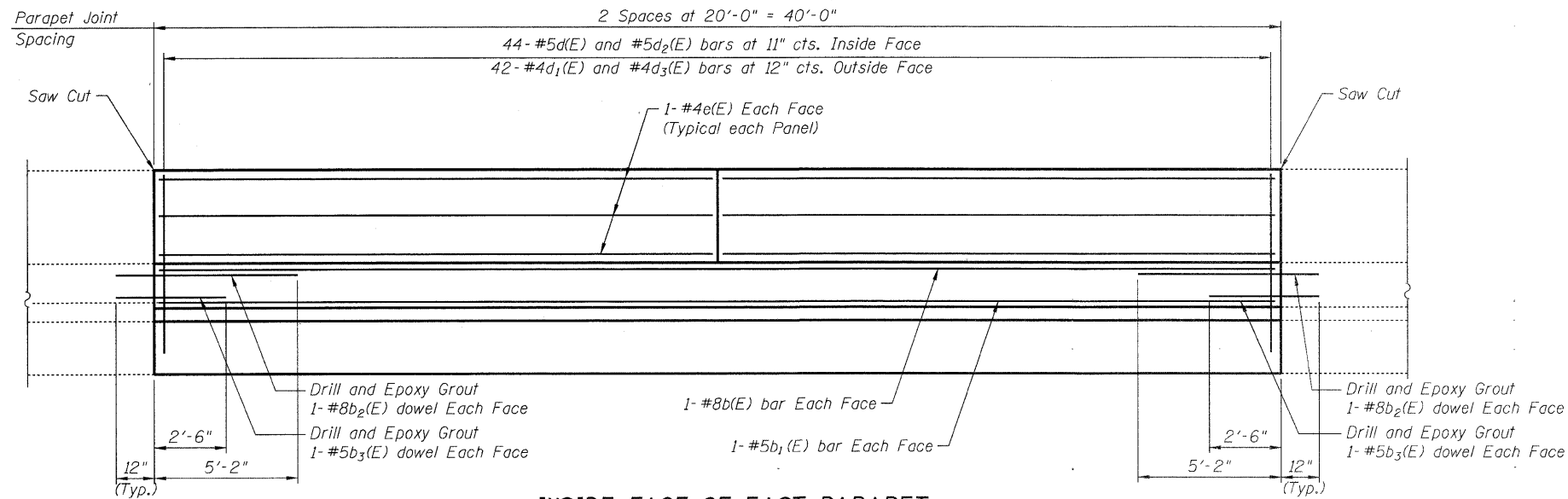


STATE OF ILLINOIS  
DEPARTMENT OF TRANSPORTATION

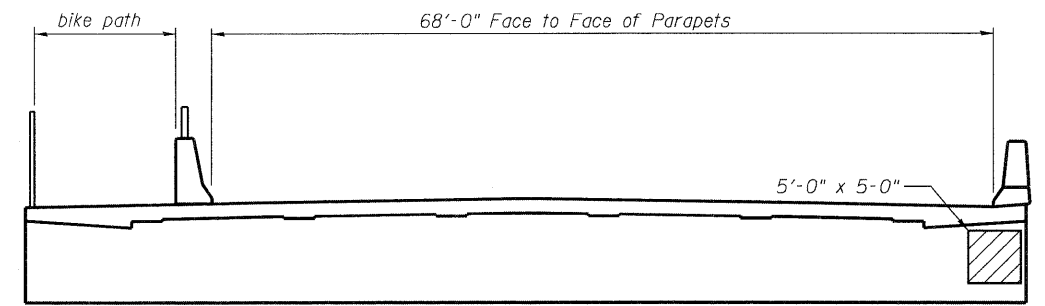


INSIDE FACE OF EAST PARAPET

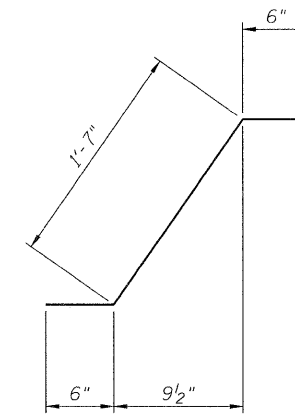
NOTES

The damaged parapet is composed of two (2) twenty (20) foot long sections on the northeast side. The actual location of the two sections will be field determined by the Engineer. The cost of backfill to correct settlement of the damaged barrier is included in the pay item "Concrete Superstructure". The bar lengths in the Reinforcement Bill of Material shall be cut and the epoxy coating repaired as required for the 2 - 20 foot sections.

Care shall be taken during concrete removal for parapet repairs, to preserve, clean and reuse existing reinforcing steel in bridge slab. Locate limits of repairs as directed by the Engineer such that existing adjacent joints are a minimum distance of 5'-0" away. Removal of existing parapet to be paid for as Concrete Removal.

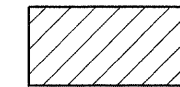


ELEVATION - NORTH ABUTMENT

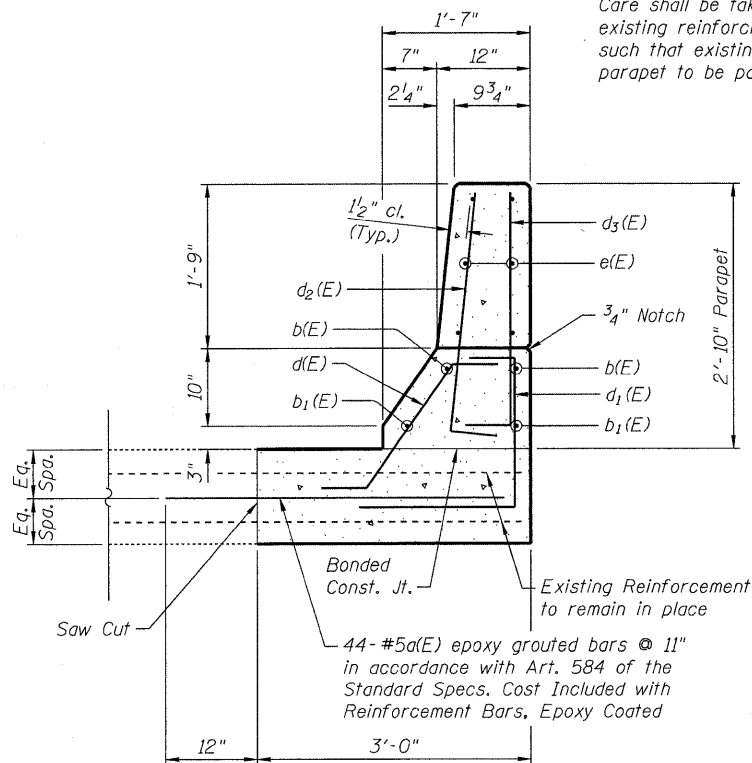


BAR d(E)

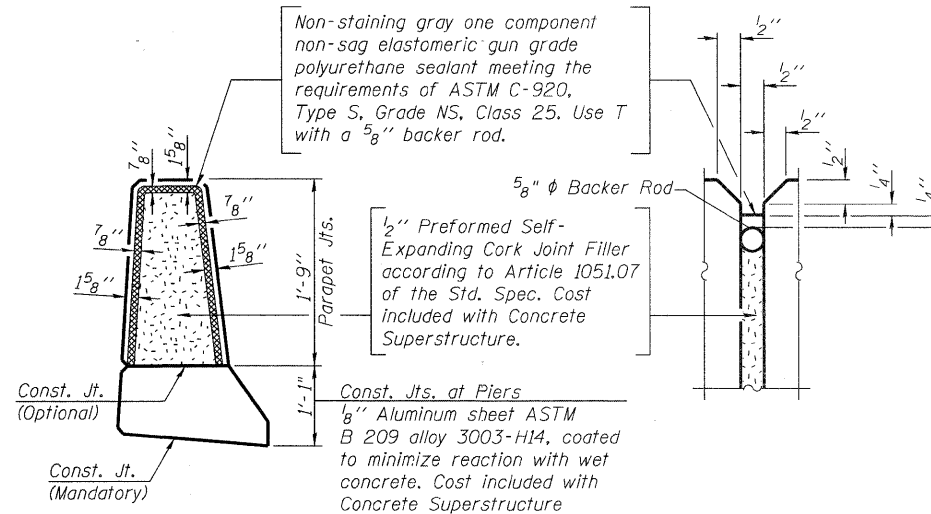
LEGEND



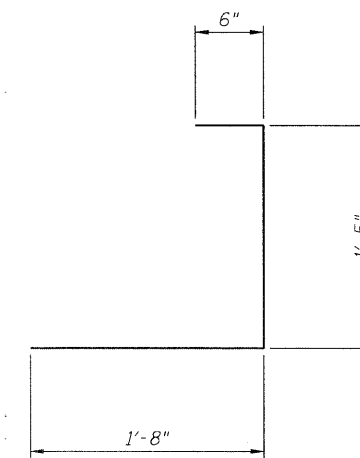
Structural Repair of Concrete  
(Depth equal to or less than 5 in.)



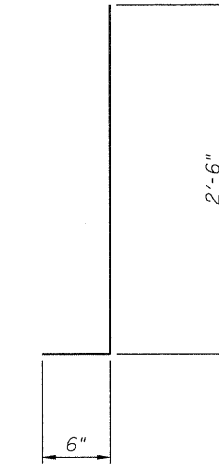
TYPICAL SECTION THRU PARAPET



PARAPET JOINT DETAILS



BAR d1(E)



BAR d2(E) & d3(E)

BILL OF MATERIAL

Bar	No.	Size	Length	Shape
d(E)	44	#5	3'-9"	—
b(E)	2	#8	39'-9"	—
b1(E)	2	#5	39'-9"	—
b2(E)	4	#8	6'-2"	—
b3(E)	4	#5	3'-6"	—
d(E)	44	#5	2'-7"	↘
d1(E)	42	#4	3'-7"	┌
d2(E)	44	#5	3'-0"	└
d3(E)	42	#4	3'-0"	└
e(E)	12	#4	19'-9"	—
Concrete Removal			Cu. Yd.	11.1
Concrete Superstructure			Cu. Yd.	11.1
Reinforcement Bars, Epoxy Coated			Pound	1150

REPAIR DETAILS  
FAU-2744 SHERIDAN RD. OVER BUCKLEY RD.  
SEC. 71 HB-I-1  
LAKE COUNTY  
STATION 120+00.00  
STRUCTURE NO. 049-0161

DESIGNED	TBS
CHECKED	RJL
DRAWN	SCS
CHECKED	TBS

**ABNA**  
9901 S. Western Ave.  
Chicago, IL 60643  
Ph. 773-881-4788  
F. 773.239.3728  
DESIGN FIRM REG. 184.002117

SHEET NO. 3 7 SHEETS	FAU	SECTION	COUNTY	TOTAL SHEETS	SHEET NO.
	2744	71 HB-I-1	LAKE	25	15
			CONTRACT NO. 60J81		
FED. ROAD DIST. NO. _ ILLINOIS FED. AID PROJECT					