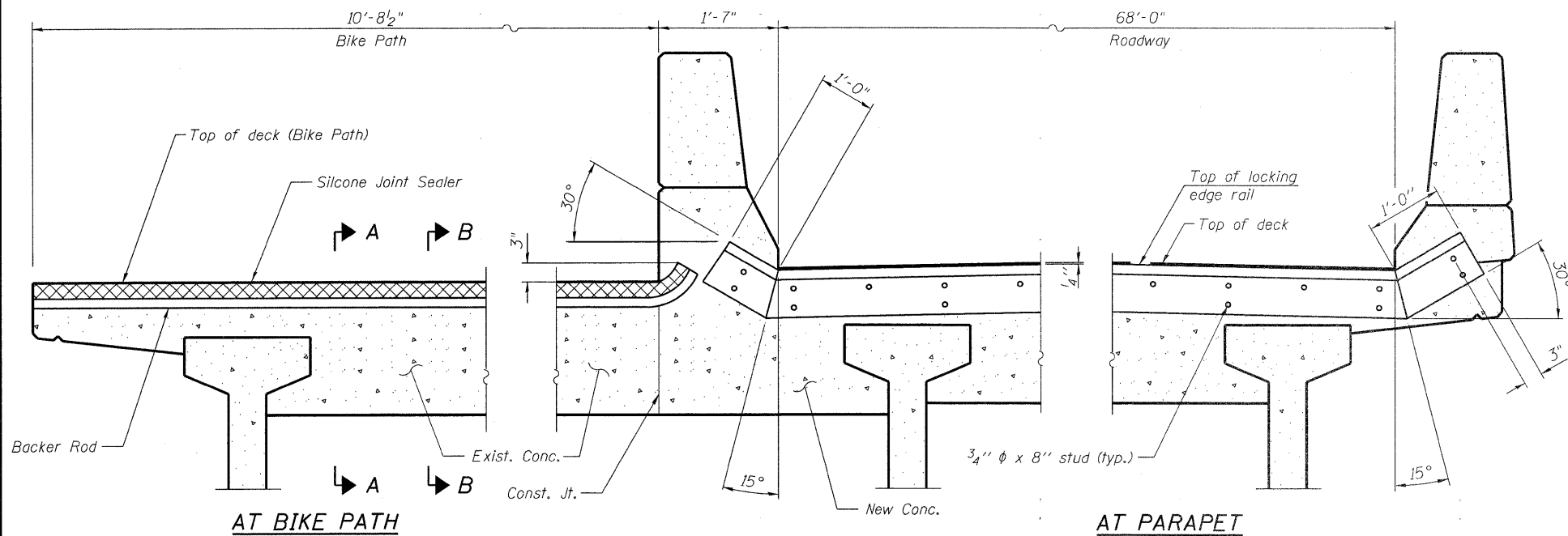


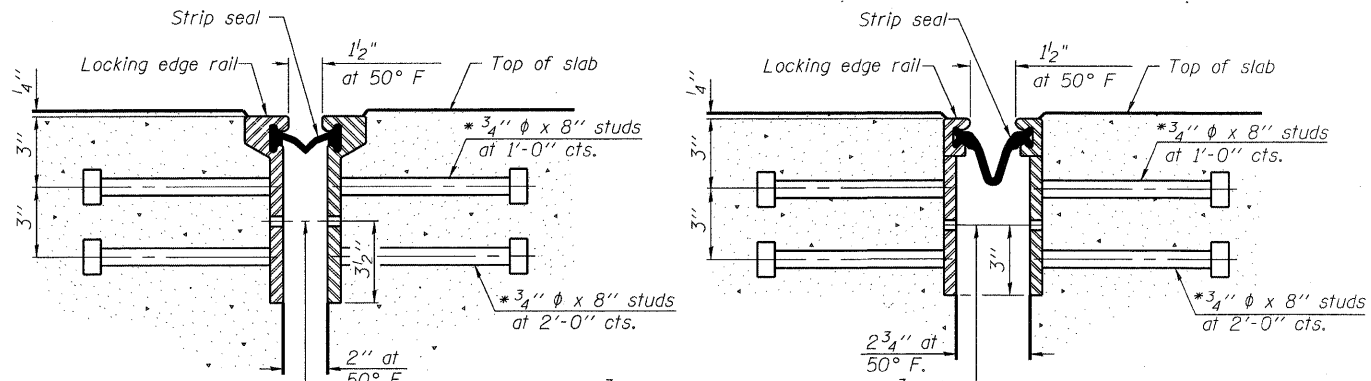
STATE OF ILLINOIS
DEPARTMENT OF TRANSPORTATION



TYPICAL END TREATMENTS

* Granular or solid flux filled headed studs conforming to Article 1006.32 of the Std. Specs., automatically end welded.

Note:
Reinforcement not shown for clarity.



7/16" ϕ holes at 4'-0" cts. for 3/8" ϕ bolts. All bolts shall be burned, sawed, or chipped off flush with the plates after forms are removed, typ.

7/16" ϕ holes at 4'-0" cts. for 3/8" ϕ bolts. All bolts shall be burned, sawed, or chipped off flush with the plates after forms are removed, typ.

SECTION THRU
ROLLED RAIL JOINT

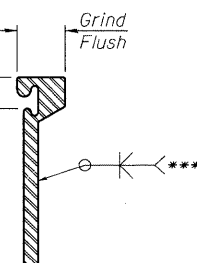
SECTION THRU
WELDED RAIL JOINT

ROLLED
EXTRUDED RAIL
WELDED RAIL

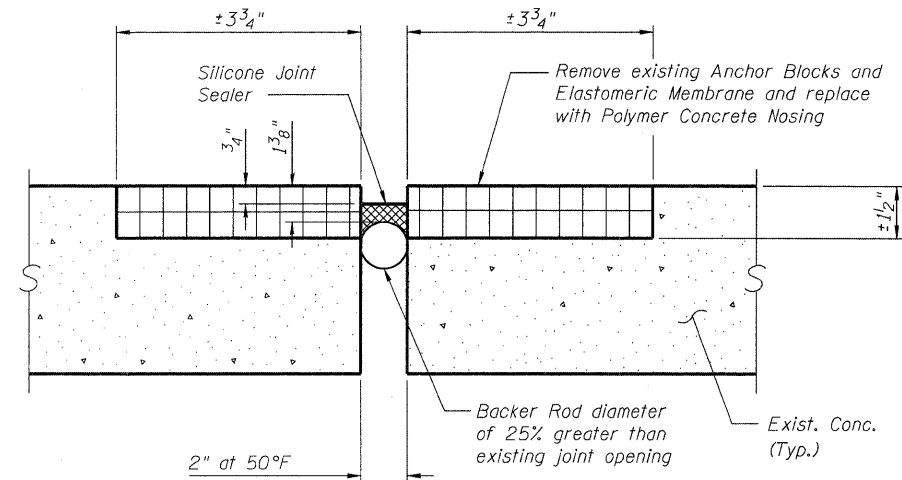
LOCKING EDGE
RAIL SPLICE

The inside of the locking edge rail groove shall be free of weld residue.
Rolled rail shown, welded rail similar.

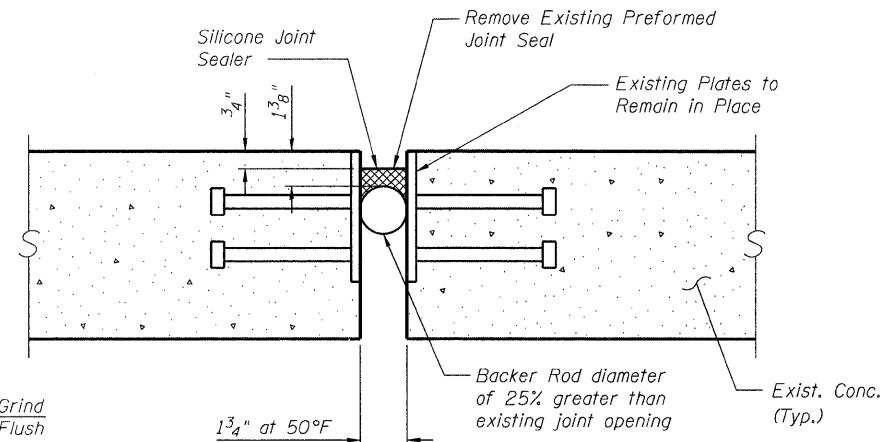
*** Back gauge not required if complete joint penetration is verified by mock-up.



Grind Flush
Omit weld at seal opening

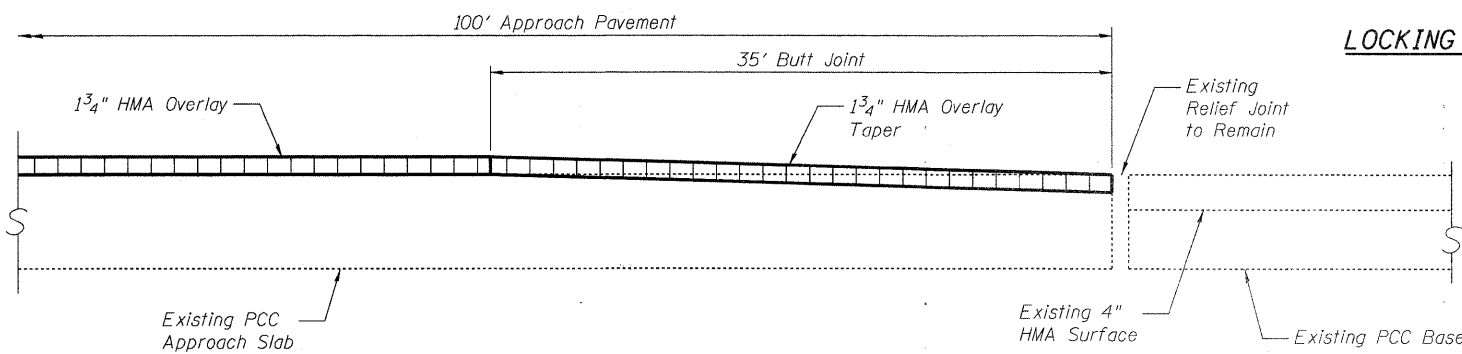


SECTION A-A AT NORTH ABUTMENT



SECTION B-B AT SOUTH ABUTMENT

Notes:
The strip seal shall be made continuous and shall have a minimum thickness of 1/4". The configuration of the strip seal shall match the configuration of the Locking Edge Rails. Open or "webbed" strip seal gland configurations are not permitted. The gland shall be sized for a maximum rated movement of 4 inches.
The Locking Edge Rails depicted are conceptual only, except for the minimum dimensions shown. The actual configuration of the Locking Edge Rails and matching strip seal may vary from manufacturer to manufacturer. Flanged edge rails will not be allowed. Locking Edge Rails may be spliced at slope discontinuities.
The manufacturer's recommended installation methods shall be followed.
The joint opening and deck dimensions detailed on the superstructure are based on a rolled rail expansion joint. If the Contractor elects to use the welded rail expansion joint, the opening and deck dimensions shall be modified according to the dimensions detailed on this sheet. Required modifications shall be made at no additional cost to the State.
All steel components shall be galvanized after fabrication according to Article 520.03 of the Standard Specifications.
Maximum space between rail segments at stage lines shall be 3/16", sealed with a suitable sealant.



OVERLAY TREATMENT AT END OF APPROACHES

DESIGNED	TBS
CHECKED	RJL
DRAWN	SCS
CHECKED	TBS

LOCKING EDGE RAILS

BILL OF MATERIAL

Item	Unit	Total
Preformed Joint Strip Seal	Foot	140
Silicone Joint Sealer	Foot	23
Polymer Concrete	Cu. Ft.	1.0

JOINT DETAILS
FAU-2744 SHERIDAN RD. OVER BUCKLEY RD.
SEC. 71 HB-1-1
LAKE COUNTY
STATION 120+00.00
STRUCTURE NO. 049-0161

ABNA
9901 S. Western Ave.
Chicago, IL 60643
Ph. 773-881-4788
F: 773.239.3728
DESIGN FIRM REG. 184.002117

SHEET NO. 6
7 SHEETS

FAU	SECTION	COUNTY	TOTAL SHEETS	SHEET NO.
2744	71 HB-1-1	LAKE	25	18
CONTRACT NO. 60J81				
FED. ROAD DIST. NO. ILLINOIS FED. AID PROJECT				