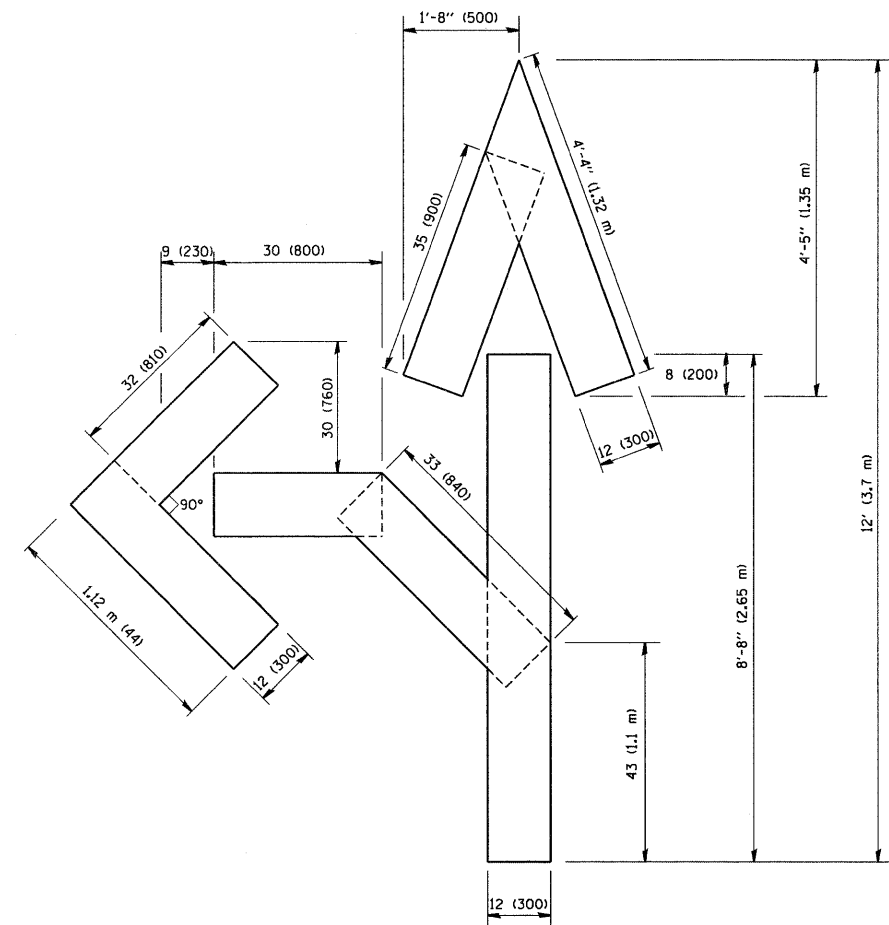
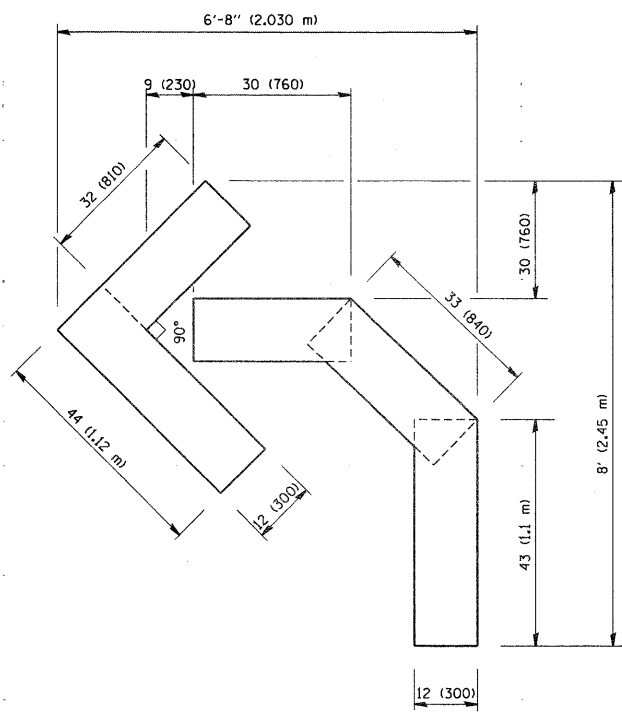


QUANTITY
 4 (100) LINE = 64.1 ft. (19.7 m)
 21.1 sq. ft. (1.97 sq. m)



QUANTITY
 4 (100) LINE = 82.5 ft. (25.3 m)
 27.5 sq. ft. (2.53 sq. m)



QUANTITY
 4 (100) LINE = 45.5 ft. (13.9 m)
 15.2 sq. ft. (1.39 sq. m)

All dimensions are in inches (millimeters) unless otherwise shown.

FILE NAME = W:\diststd\22x34\to16.dgn	USER NAME = gaglianobt	DESIGNED -	REVISED -T. RAMMACHER 06-05-96	STATE OF ILLINOIS DEPARTMENT OF TRANSPORTATION	PAVEMENT MARKING LETTERS AND SYMBOLS FOR TRAFFIC STAGING			F.A.P. RTE. 437	SECTION 71HB-I-1	COUNTY LAKE	TOTAL SHEETS 25	SHEET NO. 24	
	PLOT SCALE = 58.0000" / IN.	DRAWN -	REVISED -T. RAMMACHER 11-04-97		SCALE: NONE	SHEET NO. 1	OF 1	SHEETS	STA.	TO STA.	TC-16		CONTRACT NO. 60J81
	PLOT DATE = 1/4/2008	CHECKED -	REVISED -T. RAMMACHER 03-02-98		FED. ROAD DIST. NO. 1 ILLINOIS FED. AID PROJECT								
		DATE = 09-18-94	REVISED -E. GOMEZ 08-28-00										