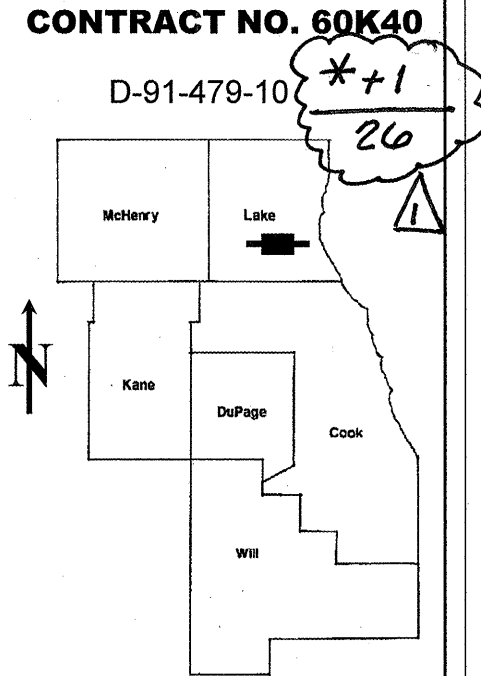


ROUTE	SECTION	COUNTY	TOTAL SHEETS	SHEET NUMBER
VARIOUS	2010-021PP	LAKE	* 25	* 1

STATE OF ILLINOIS
DEPARTMENT OF TRANSPORTATION
DIVISION OF HIGHWAYS
DISTRICT ONE
PROPOSED HIGHWAY PLANS



FOR INDEX OF SHEETS SEE SHEET 2

VARIOUS ROUTES
 SECTION: 2010-021PP
 VARIOUS LOCATIONS IN LAKE COUNTY
 PCC PAVEMENT PATCHING

C-91-479-10

LOCATION OF IMPROVEMENT INDICATED THUS:

DISTRICT ONE - DESIGN - PLAN PREPARATION ENGINEER:
 KEN ENG / (847) 705-4247

CONTRACT NO. 60K40

STATE OF ILLINOIS DEPARTMENT OF TRANSPORTATION DIVISION OF HIGHWAYS
SUBMITTED: <u>March 22 2010</u> DEPUTY DIRECTOR OF HIGHWAYS, REGION ENGINEER
<u>May 7 2010</u> <u>Scott E. Still, P.E.</u> acting ENGINEER OF DESIGN AND ENVIRONMENT
<u>May 7 2010</u> <u>Christine M. Reed</u> DIRECTOR, DIVISION OF HIGHWAYS

PRINTED BY THE AUTHORITY
OF THE STATE OF ILLINOIS

J.U.L.I.E.: JOINT UTILITY LOCATION
INFORMATION FOR EXCAVATION
 (312) 744-7000

Rev. 5-25-10

INDEX OF SHEETS

STATE STANDARDS

GENERAL NOTES

<u>SHEET NO.</u>	<u>DESCRIPTION</u>	<u>STANDARD NO.</u>	<u>DESCRIPTION</u>
1	TITLE SHEET	000001-05	TYPICAL SYMBOLS, ABBREVIATIONS AND PATTERNS
2	INDEX OF SHEETS, STATE STANDARDS AND GENERAL NOTES	420001-07	PAVEMENT JOINTS
3	SUMMARY OF QUANTITIES	420701-02	PAVEMENT FABRIC
4	GENERAL LOCATION MAP	421001-02	BAR REINFORCEMENT FOR CRC PAVEMENT
5	SUMMARY OF PATCHING SCHEDULE	442001-04	CLASS A PATCHES
6-7	PATCHING SCHEDULE	442101-07	CLASS B PATCHES
8-9	TEMPORARY DETOUR PLAN (PETERSON RD. RAMPS)	602306-02	INLET - TYPE B
10-12	TEMPORARY DETOUR PLAN (CLAVEY RD. RAMPS)	701400-04	APPROACH TO LANE CLOSURE, FREEWAY/EXPRESSWAY
13	CURB OR CURB AND GUTTER REMOVAL AND REPLACEMENT	701401-05	LANE CLOSURE, FREEWAY/EXPRESSWAY
14	FREEWAY ENTRANCE AND EXIT RAMP CLOSURE DETAILS	701411-06	LANE CLOSURE, MULTILANE, AT ENTRANCE OR EXIT RAMPS
15	FREEWAY SINGLE AND MULTI-LANE WEAVE	701426-03	LANE CLOSURE, MULTILANE, INTERMITTENT OR MOVING OPERATIONS
16	TRAFFIC CONTROL AND PROTECTION FOR SIDE ROADS, INTERSECTIONS AND DRIVEWAYS	701446-01	TWO LANE CLOSURE, FREEWAY/EXPRESSWAY
17	TYPICAL APPLICATIONS: RAISED REFLECTIVE PAVEMENT MARKERS (SNOW-PLOW RESISTANT)	701901-01	TRAFFIC CONTROL DEVICES
18-19	MULTI-LANE FREEWAY PAVEMENT MARKING DETAILS		
20	DISTRICT ONE TYPICAL PAVEMENT MARKINGS		
21	FREEWAY SHOULDER CLOSURES AND PARTIAL RAMP CLOSURES		
22	TRAFFIC CONTROL AND PROTECTION OF TURN BAYS (TO REMAIN OPEN TO TRAFFIC)		
23	DETOUR SIGNING FOR CLOSING STATE HIGHWAYS		
24	ARTERIAL ROAD INFORMATION SIGN		
25	STANDARD TRAFFIC SIGNAL DESIGN DETAILS		
25A	TRAFFIC CONTROL DETAILS FOR FREEWAY CENTER LANE CLOSURE		

BEFORE STARTING ANY EXCAVATION, THE CONTRACTOR SHALL CALL "JULIE" AT (800) 892-0123 OR 811 FOR FIELD LOCATIONS OF BURIED ELECTRIC, TELEPHONE AND GAS FACILITIES. (48 HOUR NOTIFICATION REQUIRED)

THE CONTRACTOR WILL NOT BE ALLOWED TO SET UP A YARD OR FIELD OFFICE ON STATE (OR TOLLWAY) PROPERTY WITHOUT WRITTEN PERMISSION FROM THE DEPARTMENT (OR ISTHA)

WHEN ARTIFICIAL LIGHTING IS UTILIZED IN NIGHT OPERATIONS, THE CONTRACTOR SHALL EXERCISE THE UTMOST PRECAUTIONS IN PREVENTING ADVERSE VISIBILITY TO THE MOTORING PUBLIC AND ADJOINING RESIDENTIAL AREAS.

BEFORE BEGINNING ANY WORK, THE CONTRACTOR SHALL RETAIN AND RECORD FOR FUTURE REFERENCE, ALL EXISTING PAVEMENT MARKING LINES (AND RAISED REFLECTIVE PAVEMENT MARKERS) IN ORDER THAT THESE LOCATIONS CAN BE RE-ESTABLISHED FOR STRIPING. EXACT LOCATIONS OF ALL PAVEMENT MARKINGS SHALL BE AS DIRECTED BY THE ENGINEER.

ALL PAVEMENT PATCHING LOCATIONS WILL BE DETERMINED IN THE FIELD BY THE ENGINEER.

THE CONTRACTOR SHALL CONTACT THE DISTRICT ONE TRAFFIC CONTROL SUPERVISOR AT (847) 705-4470 A MINIMUM OF 72 HOURS IN ADVANCE OF BEGINNING WORK.

THE ENGINEER SHALL CONTACT MS. DEBBIE HANLON, AREA TRAFFIC FIELD ENGINEER AT (847) 438-2300 MINIMUM OF TWO (2) WEEKS PRIOR TO PLACEMENT OF PERMANENT PAVEMENT MARKINGS.

DOUBLE LANE MARKERS ARE TO BE USED AS SHOWN ON THE DISTRICT ONE DETAIL "TYPICAL APPLICATIONS - RAISED REFLECTIVE PAVEMENT MARKERS (SNOW-PLOW RESISTANT)" SHOWN IN THE PLANS.

THE EXISTING ROADWAY TYPICAL SECTION IS ASSUMED TO BE 9 INCHES OF PORTLAND CEMENT CONCRETE (PCC) PAVEMENT.

THE MINIMUM CLASS A PATCH DIMENSIONS SHALL BE A LENGTH OF 4.5 FEET AND A WIDTH THAT INCLUDES HALF THE WIDTH OF THE TRAVEL WAY. THE MINIMUM CLASS B PATCH DIMENSIONS SHALL BE A LENGTH OF 6 FEET AND A WIDTH THAT INCLUDES THE FULL WIDTH OF THE TRAVEL WAY.

FOR ALL PATCHING ON US 41, CLAVEY RD. RAMPS AND PETERSON RD. RAMPS, CLASS PP-2 PORTLAND CEMENT CONCRETE IS TO BE USED.

JOINT SEALING FOR CLASS B PATCHES IS TO BE REPLACED WITH A SOLID PLASTIC BOND BREAKER (1/8" X T/3"; WHERE T IS EQUAL TO THE THICKNESS OF THE PATCH). THE COST OF THE SOLID PLASTIC BOND BREAKER IS TO BE INCLUDED IN THE COST OF THE CLASS B PATCH.

NO ROUTES WERE IDENTIFIED TO BE PATCHED IN MCHENRY COUNTY.

Rev. Sheet 5-27-10

FILE NAME =	USER NAME = wilgreendp	DESIGNED -	REVISED - 4/30/10 - DW	STATE OF ILLINOIS DEPARTMENT OF TRANSPORTATION	INDEX OF SHEETS, STATE STANDARDS AND GENERAL NOTES	F.A. RTE.	SECTION	COUNTY	TOTAL SHEETS	SHEET NO.
at:\pw_work\pwsdot\wilgreendp\d8183633\Design.dgn	DRAWN -	REVISED -	VAR.			2010-021PP	LK. & MCH.	25	2	
PLOT SCALE = 100.0000' / IN.	CHECKED -	REVISED -	CONTRACT NO. 60K40							
PLOT DATE = 5/3/2010	DATE -	REVISED -	FED. ROAD DIST. NO. 1 ILLINOIS FED. AID PROJECT							
				SCALE: SHEET NO. OF SHEETS STA. TO STA.						

SUMMARY OF QUANTITIES					CONSTRUCTION TYPE CODE					SUMMARY OF QUANTITIES					CONSTRUCTION TYPE CODE				
CODE NO	ITEM	UNIT	TOTAL QUANTITIES	1000						CODE NO	ITEM	UNIT	TOTAL QUANTITIES	1000					
42101300	PROTECTIVE COAT	SO YD	1583	1583						X7013820	TRAFFIC CONTROL SURVEILLANCE, EXPRESSWAYS	CAL DA	6	6					
44001700	COMBINATION CONCRETE CURB AND GUTTER REMOVAL AND REPLACEMENT	FOOT	50	50						70300520	PAVEMENT MARKING TAPE, TYPE III 4"	FOOT	1840	1840					
44200541	CLASS A PATCHES, TYPE II, 9 INCH	SO YD	56	56						70300540	PAVEMENT MARKING TAPE, TYPE III 6"	FOOT	25	25					
44200545	CLASS A PATCHES, TYPE III, 9 INCH	SO YD	92	92						*78000200	THERMOPLASTIC PAVEMENT MARKING-LINE 4"	FOOT	1840	1840					
44200956	CLASS B PATCHES, TYPE II, 9 INCH	SO YD	614	614						*78000300	THERMOPLASTIC PAVEMENT MARKING-LINE 5"	FOOT	25	25					
44200962	CLASS B PATCHES, TYPE III, 9 INCH	SO YD	304	304						70300530	PAVEMENT MARKING TAPE, TYPE III 5"	FOOT	25	25					
44200964	CLASS B PATCHES, TYPE IV, 9 INCH	SO YD	505	505						*78000400	THERMOPLASTIC PAVEMENT MARKING-LINE 6"	FOOT	25	25					
44213000	PATCHING REINFORCEMENT	SO YD	148	148															
44213100	PAVEMENT FABRIC	SO YD	809	809															
44213200	SAW CUTS	FOOT	7560	7560															
60262700	INLETS TO BE RECONSTRUCTED	EACH	1	1															
67000400	ENGINEER'S FIELD OFFICE, TYPE A	CAL MO	6	6															
67100100	MOBILIZATION	L SUM	1	1															
70102550	TRAFFIC CONTROL AND PROTECTION FOR TEMPORARY DETOUR	EACH	6	6															
70106800	CHANGEABLE MESSAGE SIGN	CAL MO	1	1															
*78000210	POLYUREA PAVEMENT MARKING TYPE I LINE 4"	FOOT	1840	1840															
*78000220	POLYUREA PAVEMENT MARKING TYPE I LINE 5"	FOOT	25	25															
*78000230	POLYUREA PAVEMENT MARKING TYPE I LINE 6"	FOOT	25	25															
*78100100	RAISED REFLECTIVE PAVEMENT MARKER	EACH	50	50															
*88600600	DETECTOR LOOP REPLACEMENT	FOOT	50	50															
X0322256	TEMPORARY INFORMATION SIGNING	SO FT	51.4	51.4															
X0325702	NIGHTTIME WORK ZONE LIGHTING	L SUM	1	1															
X7011015	TRAFFIC CONTROL AND PROTECTION (EXPRESSWAYS)	L SUM	1	1															
Z0017202	DOWEL BARS 1 1/2"	EACH	1820	1820															
Z0048665	RAILROAD PROTECTIVE LIABILITY INSURANCE	L SUM	1	1															
Z0075310	TIE BARS 3/4"	EACH	190	190															
44000500	COMBINATION CURB AND GUTTER REMOVAL	FOOT	50	50															
60603000	COMBINATION CONCRETE CURB AND GUTTER, TYPE B-G.12	FOOT	50	50															

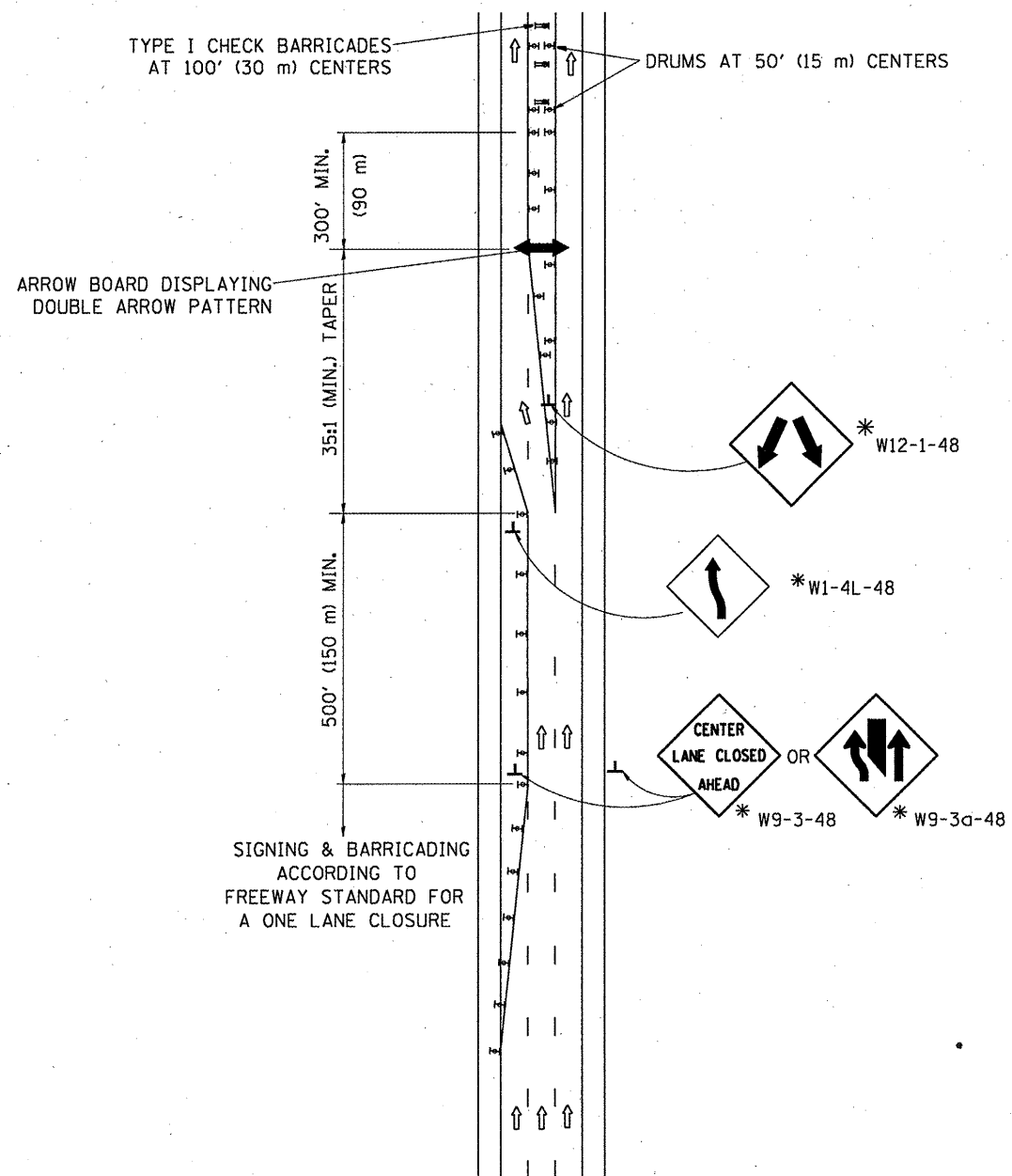
Handwritten notes and circled items in the right-hand table:

- A large hand-drawn circle encompasses the items: X7013820 TRAFFIC CONTROL SURVEILLANCE, EXPRESSWAYS; 70300520 PAVEMENT MARKING TAPE, TYPE III 4"; 70300540 PAVEMENT MARKING TAPE, TYPE III 6"; *78000200 THERMOPLASTIC PAVEMENT MARKING-LINE 4"; *78000300 THERMOPLASTIC PAVEMENT MARKING-LINE 5"; 70300530 PAVEMENT MARKING TAPE, TYPE III 5"; *78000400 THERMOPLASTIC PAVEMENT MARKING-LINE 6".
- A small triangle symbol is drawn next to the item *78000200.
- The word "1000" is written above the "TOTAL QUANTITIES" column header for the right-hand table.

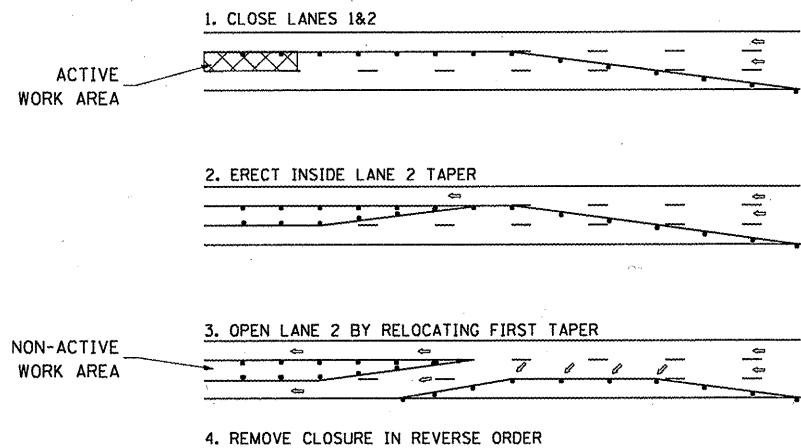
Rev. 5-27-10

Rev.

CENTER LANE CLOSURE



INSTALLATION SEQUENCE

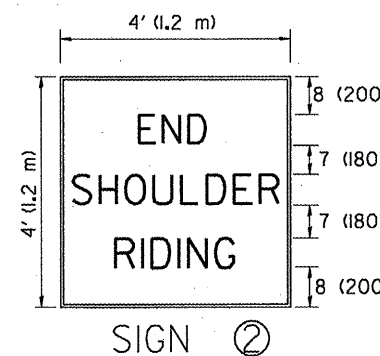
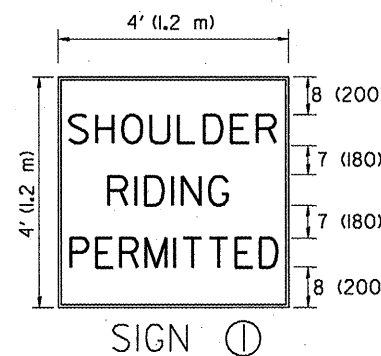
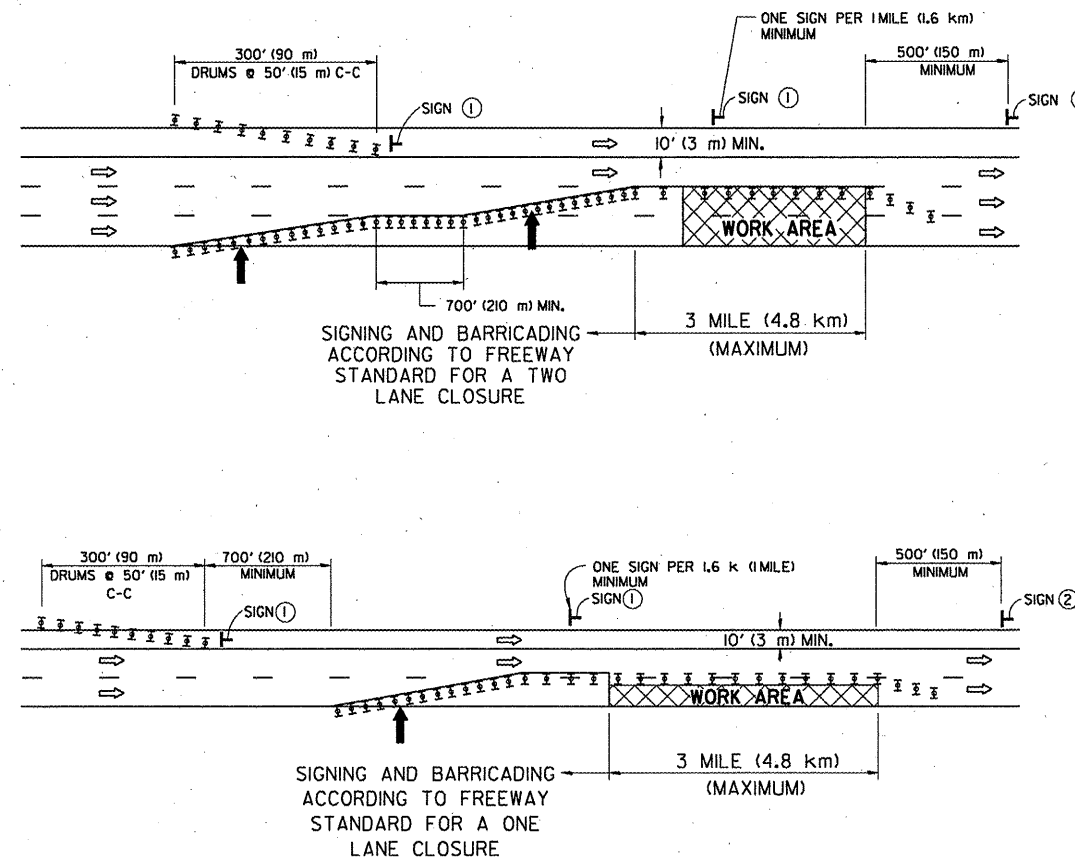


NOTES

- DRUMS WITH STEADY BURN LIGHTS SHALL BE USED AT 50' (15 m) CENTERS ON ALL TAPERS AND TANGENTS IN ADVANCE OF WORK AREA.
- CLOSURE SHALL BE USED ONLY FOR OPERATIONS LASTING 72 HOURS OR LESS.
- CENTER LANE CLOSURE CONFIGURATION IS NOT TO BE USED WITH WORKERS PRESENT.

SHOULDER LANE

NOTE: CLOSURE SHALL BE USED ONLY FOR OPERATIONS LASTING 72 HOURS OR LESS.



6 (150) SERIES "C" LEGEND
BLACK LEGEND
WHITE REFLECT. BACKGROUND
1(25) BORDER

SYMBOLS

- ↑ DIRECTION OF TRAFFIC
- ARROWBOARD
- ▨ ACTIVE WORK AREA
- ⊣ SIGN ON PORTABLE OR PERMANENT SUPPORT *
- ⊥ TYPE II BARRICADE, OR DRUM WITH MONO-DIRECTIONAL STEADY BURN LIGHT

ALL DIMENSIONS ARE IN INCHES (MILLIMETERS) UNLESS OTHERWISE SHOWN

* ALL SIGNS SHALL BE MOUNTED AT A MINIMUM HEIGHT OF 5' (1.5 m).
Added Sheet 5-27-10

FILE NAME =	USER NAME = wilgreendp	DESIGNED -	REVISED - J.A.F. 04-03
ct:\pw_work\p1dot\wilgreendp\d8183633\DistStd.dgn		DRAWN -	REVISED - S.P.B. 01-07
	PLOT SCALE = 1/8" = 1'-0"	CHECKED -	REVISED - S.P.B. 12-09
	PLOT DATE = 5/3/2010	DATE -	REVISED -

STATE OF ILLINOIS
DEPARTMENT OF TRANSPORTATION

TRAFFIC CONTROL DETAILS FOR FREEWAY
CENTER LANE CLOSURE SHOULDER LANE

SCALE: NONE SHEET NO. 1 OF 1 SHEETS STA. TO STA.

F.A. RTE.	SECTION	COUNTY	TOTAL SHEETS	SHEET NO.
VAR.	2010-021PP	L.K. & MCH	25	254
TC-25			CONTRACT NO. 60K40	
FED. ROAD DIST. NO. 1 ILLINOIS FED. AID PROJECT				