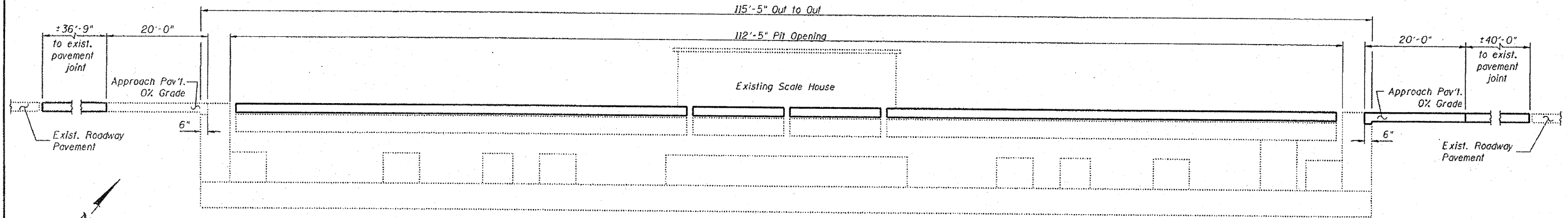
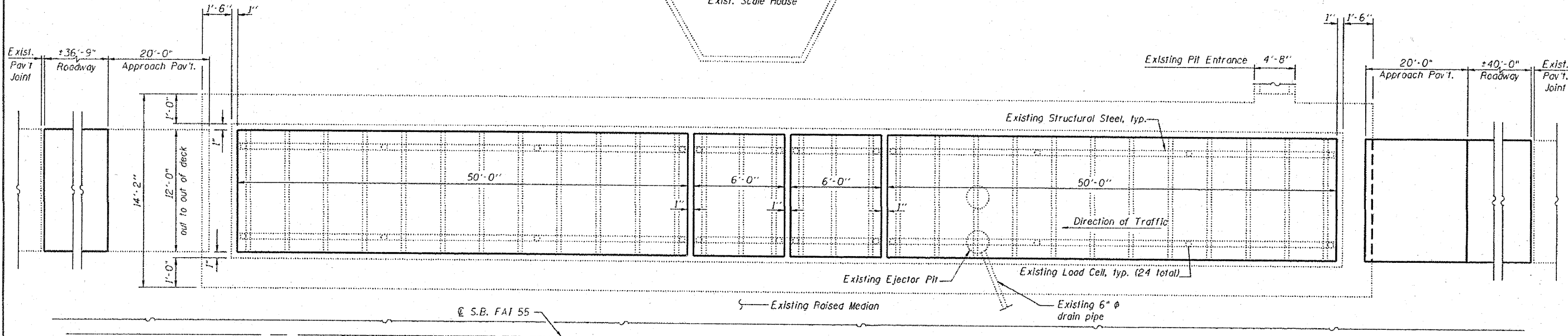
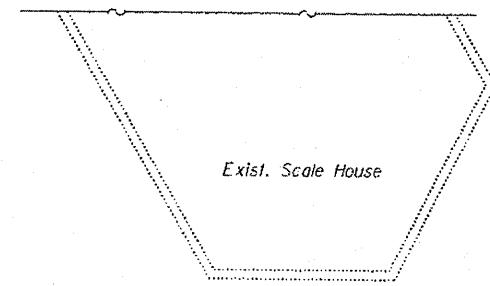


STATE OF ILLINOIS  
DEPARTMENT OF TRANSPORTATION



**LONGITUDINAL SECTION**  
(S.B. Structure)



**PLAN**  
(S.B. Structure)

**GENERAL PLAN AND ELEVATION**  
**BOLINGBROOK WEIGH STATION (SB)**  
**F.A.I. RT. 55 / I-55 - SEC. 2009-017 I**  
**WILL COUNTY**  
**STATION 395+00**

DESIGNED - JSD
CHECKED - GWC
DRAWN - GJS
CHECKED - GWC

**LOCHNER**  
H.W. LOCHNER, INC.  
CONSULTING ENGINEERS & PLANNERS  
20 NORTH WACKER DRIVE SUITE 1200  
CHICAGO, IL 60606

SHEET NO. 2 7 SHEETS	F.A.I. RTE.	SECTION	COUNTY	TOTAL SHEETS	SHEET NO.
	55	99-1-TWS-I-5	WILL	13	5
CONTRACT NO. 60K43					
FED. ROAD DIST. NO. 1   ILLINOIS FED. AID PROJECT					

T:\4265-1-55-SB\_Weigh\_Station\Struct\dgn\60G16-002.dgn