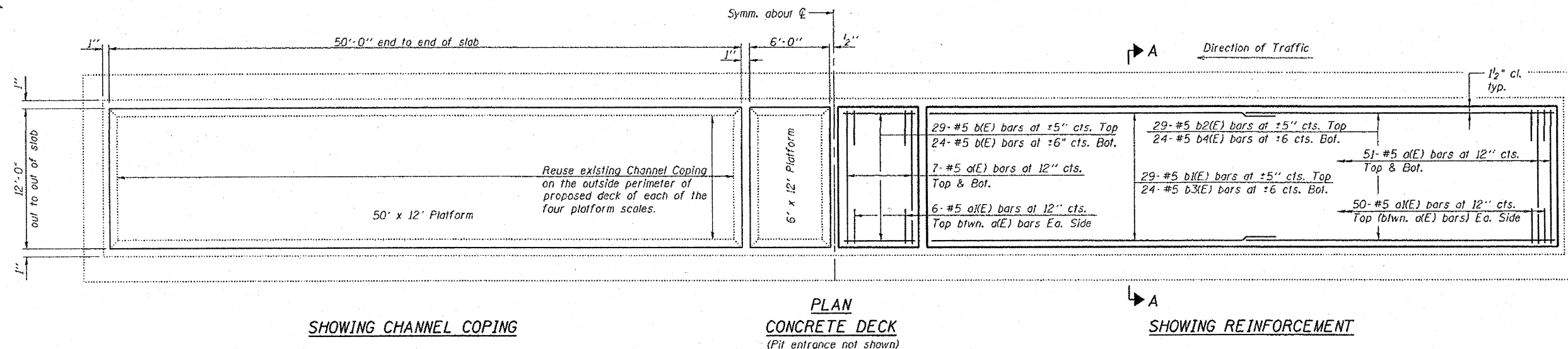


STATE OF ILLINOIS
DEPARTMENT OF TRANSPORTATION

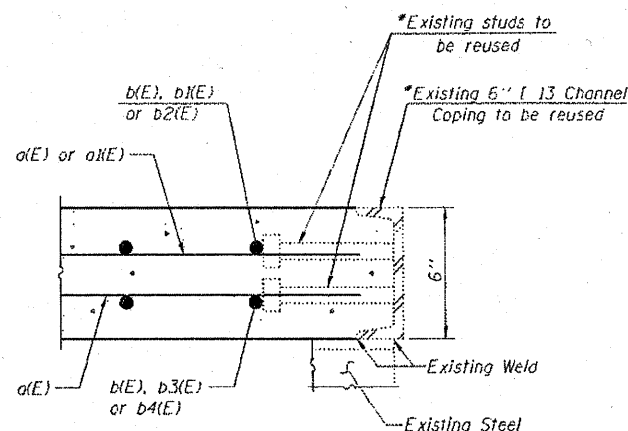
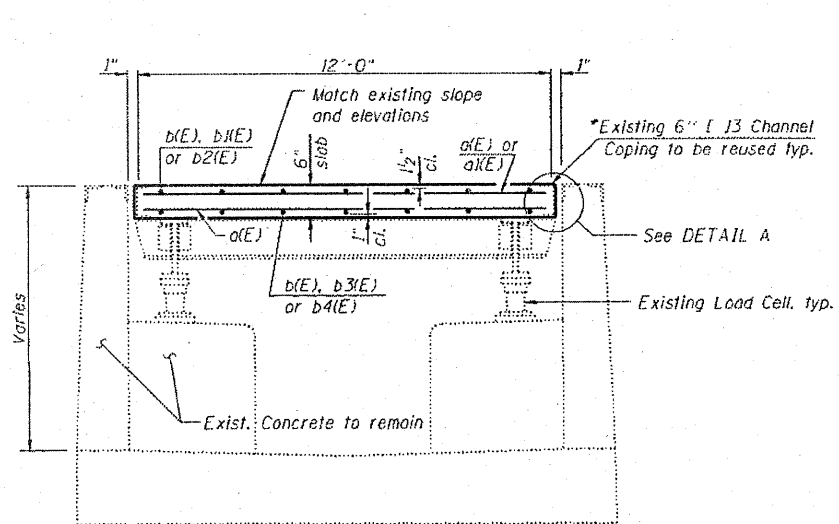


MIN. BAR LAP

#5 Bar = 2'-2"

BILL OF MATERIAL

Bar	No.	Size	Length	Shape
a(E)	232	#5	11'-9"	—
a(E)	224	#5	2'-9"	—
b(E)	106	#5	5'-9"	—
b(E)	58	#5	29'-1"	—
b2(E)	58	#5	22'-10"	—
b3(E)	48	#5	27'-1"	—
b4(E)	48	#5	24'-10"	—
Protective Coat		Sq. Yd.	150	
Conc. Superstructure		Cu. Yd.	25	
Reinforcement Bars, Epoxy Coated		Pound	9860	



Note A:

*The Contractor has the option to remove the existing channel coping (with existing studs) which is welded to the existing steel and replace it with new channel coping (with new studs). If the Contractor chooses to do this, the Bureau of Bridges and Structures shall be contacted for weld information. The Contractor shall exercise care not to damage the existing steel which is to be reused, and there shall be no extra cost to the Department. The cost of removing, cleaning, painting and reinstalling the existing coping channels shall be included with the cost of Removal of Existing Concrete Deck.

NOTE:

See Sheets 6 and 7 of 7 for approach and ramp pavement details.

CONCRETE DECK PLAN AND DETAILS
BOLINGBROOK WEIGH STATION (SB)

DESIGNED - JSD
CHECKED - GWS
DRAWN - GJS
CHECKED - GWS

LOCHNER

H.W. LOCHNER, INC.
CONSULTING ENGINEERS & PLANNERS
20 NORTH WACKER DRIVE SUITE 1200
CHICAGO, IL 60606

SHEET NO. 4	F.A.I. RTE.	SECTION	COUNTY	TOTAL SHEETS	SHEET NO.
	55	99-1-TWS-I-5	WILL	13	7
7 SHEETS	CONTRACT NO. 60K43				
FED. ROAD DIST. NO. 1 ILLINOIS FED. AID PROJECT					

T:\4265-1-55-SB_Weigh_Station\Struct\dgn\60G16-004.dgn