

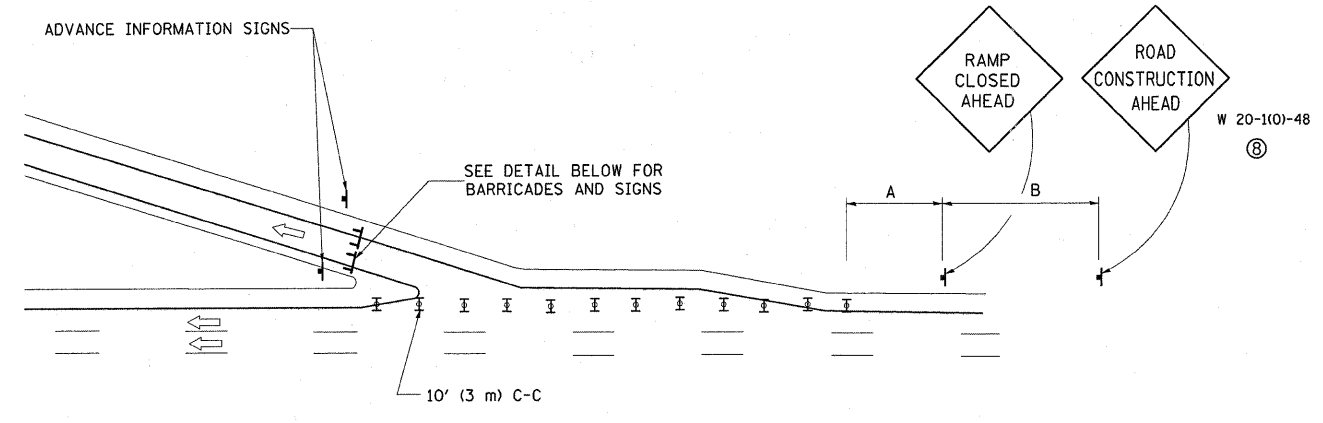
ENTRANCE RAMP CLOSURE

SIGN SPACING TABLE

| FACILITY | DISTANCE BETWEEN SIGNS | |
|----------------------|------------------------|---------------|
| | A | B |
| EXPRESSWAY >24 HOURS | 1000' (300 m) | 1500' (450 m) |
| EXPRESSWAY ≤24 HOURS | 500' (150 m) | 500' (150 m) |
| ARTERIAL ≥45 MPH | 350' (100 m) | 350' (100 m) |
| ARTERIAL <45 MPH | 150' (45 m) | 150' (45 m) |

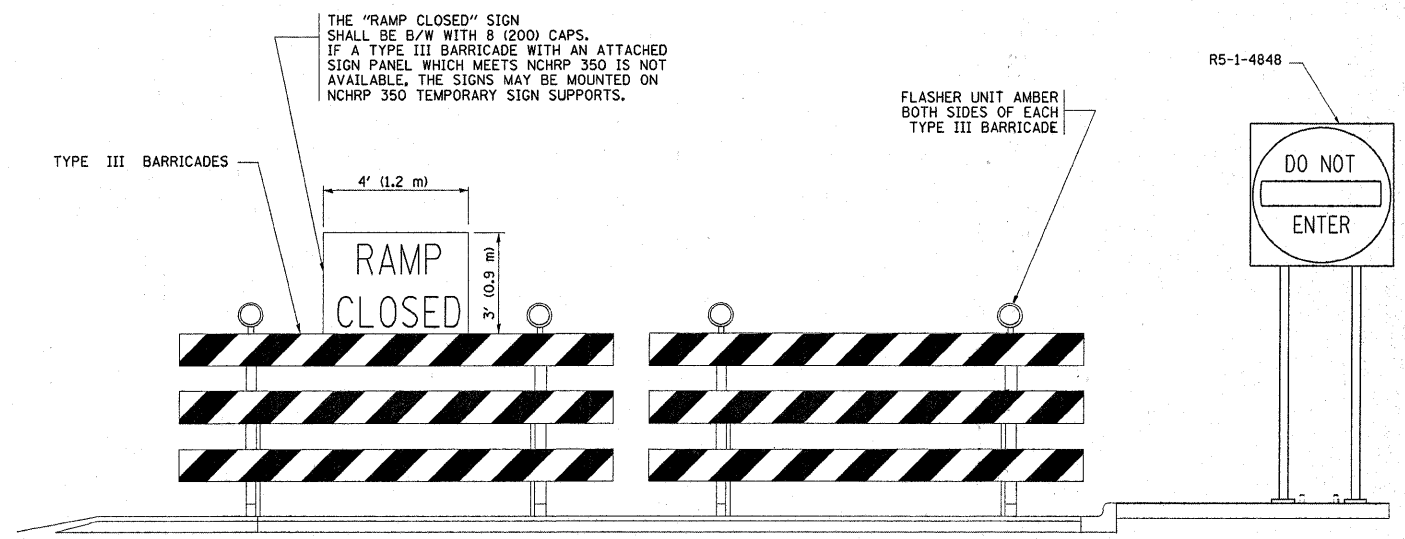
DISTANCES MAY BE SHORTENED DEPENDING UPON THE PROXIMITY OF ADJACENT RAMPS OR INTERSECTIONS.

W 20-1(0)-48
⑧⑨

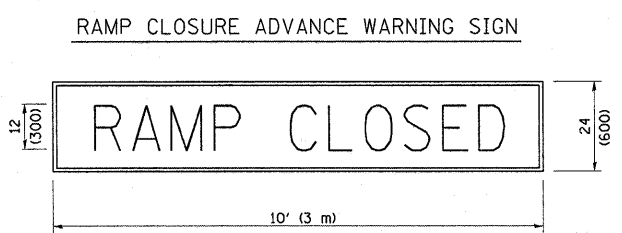


EXIT RAMP CLOSURE

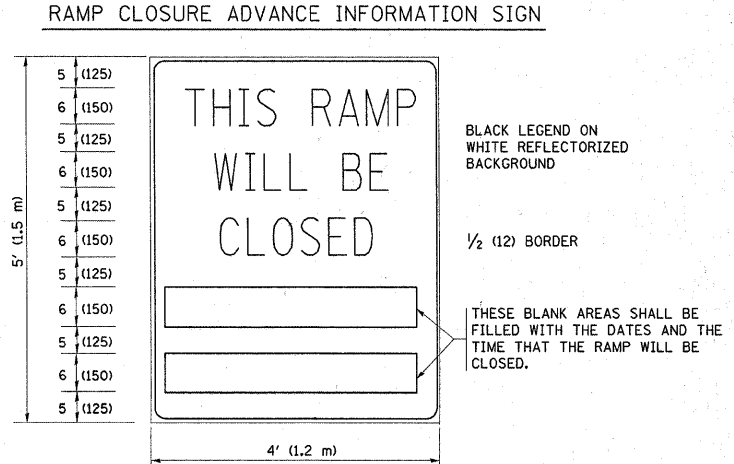
- SYMBOLS**
- ▬ TYPE II BARRICADE, DRUM OR VERTICAL BARRICADE WITH STEADY BURN MONO-DIRECTIONAL LIGHT
 - ▬ TYPE III BARRICADE WITH FLASHING LIGHT



DETAIL FOR REQUIRED BARRICADES & SIGNS



BLACK LEGEND ON ORANGE REFLECTORIZED BACKGROUND
1 (25) BORDER
THESE SIGNS ARE REQUIRED ON ALL THE EXIT GUIDE SIGNS FOR THE CLOSED EXIT RAMPS.



THESE SIGNS ARE REQUIRED ON BOTH SIDES OF THE RAMP, MINIMUM OF 1 WEEK IN ADVANCE OF THE CLOSURE.

GENERAL NOTES:

- ① CONES MAY BE SUBSTITUTED FOR DRUMS OR TYPE II BARRICADES DURING DAY OPERATIONS. CONES SHALL BE A MINIMUM OF 28 (700) HIGH.
- ② STEADY BURN LIGHTS WILL NOT BE REQUIRED FOR DAY OPERATIONS.
- ③ A FLAGGER SHALL BE POSITIONED AT EACH CLOSED RAMP THAT IS OPEN TO CONSTRUCTION VEHICLES.
- ④ ALL ROUTE MARKERS AND TRAILBLAZER ASSEMBLIES WHICH DIRECT MOTORISTS TO A CLOSED ENTRANCE RAMP SHALL BE COVERED.
- ⑤ THE SIGNING AND BARRICADING WHICH IS REQUIRED BY THIS DETAIL SHALL BE INCLUDED IN THE COST OF TRAFFIC CONTROL AND PROTECTION (EXPRESSWAYS).
- ⑥ AUTHORIZATION FROM THE DISTRICT'S BUREAU OF TRAFFIC IS REQUIRED FOR ALL RAMP CLOSURES.
- ⑦ THE RAMP CLOSURE ADVANCE INFORMATION SIGNS SHALL BE ERECTED IF THE CLOSURE TIME EXCEEDS TWENTY-FOUR (24) HOURS. ADDITIONAL ADVANCE WARNING SIGNS ON EXIT GUIDE SIGNING WILL BE REQUIRED FOR EXIT RAMP CLOSURES THAT EXCEED TWENTY-FOUR (24) HOURS IN LENGTH.
- ⑧ ROAD CONSTRUCTION AHEAD SIGNS MAY BE OMITTED WHEN THIS DETAIL IS USED IN CONJUNCTION WITH OTHER TRAFFIC CONTROL THAT ALREADY INCLUDES A ROAD CONSTRUCTION AHEAD SIGN.
- ⑨ ARTERIAL ROAD CONSTRUCTION AHEAD SIGNS MAY BE OMITTED ON CLOSURES LESS THAN 24 HOURS IN DURATION.

ALL DIMENSIONS ARE IN INCHES (MILLIMETERS) UNLESS OTHERWISE SHOWN.

| | | | |
|---|---------------------|----------------|-------------------------|
| FILE NAME = | USER NAME = rosierj | DESIGNED - DWS | REVISED - DWS/JAF 12-02 |
| ca:\pwork\FWIDOT\ROSIEREJM\0184552\Drawings\std.dgn | | DRAWN - | REVISED - JAF 02-06 |
| PLOT SCALE = 50.0000' / IN. | | CHECKED - | REVISED - SPB 01-07 |
| PLOT DATE = 3/20/2010 | | DATE - 02-83 | REVISED - SPB 12-09 |

STATE OF ILLINOIS
DEPARTMENT OF TRANSPORTATION

| | | | |
|--|-------------------------|--------------|--|
| FREWAY ENTRANCE AND EXIST RAMP CLOSURE DETAILS | | | |
| SCALE: NONE | SHEET NO. 1 OF 1 SHEETS | STA. TO STA. | |

| | | | | |
|---|----------------------|--------------------|-----------------|--------------|
| F.A.I. RTE. 55 | SECTION 99-1-TWS-1-5 | COUNTY WILL | TOTAL SHEETS 13 | SHEET NO. 13 |
| TC-08 | | CONTRACT NO. 60K43 | | |
| FED. ROAD DIST. NO. 1 ILLINOIS FED. AID PROJECT | | | | |