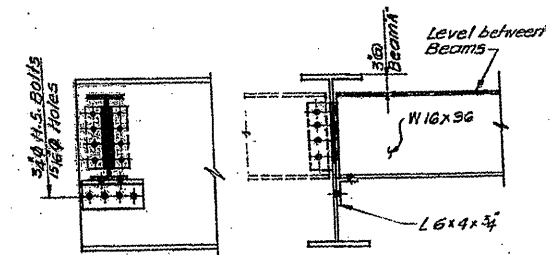
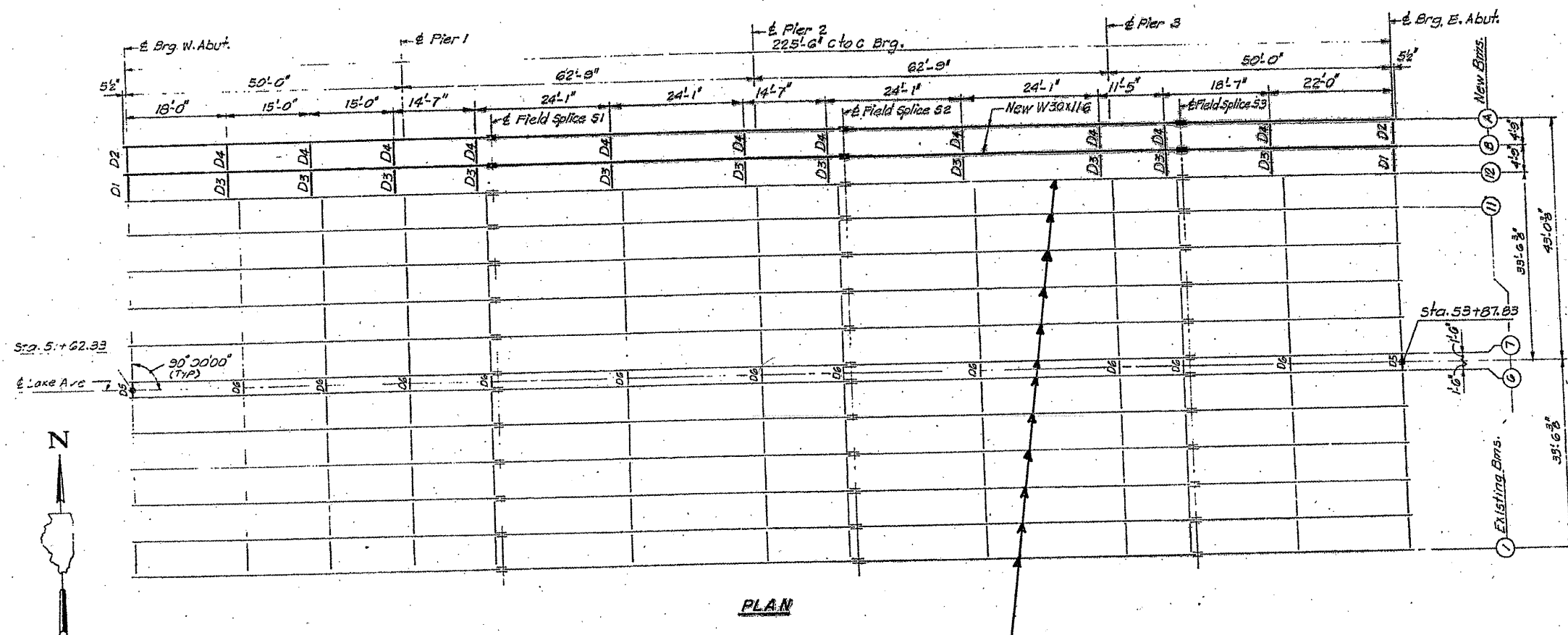


ROUTE VARIOUS	SECTION 2010-023 BP	COUNTY VARIOUS	TOTAL SHEETS 93	SHEET NUMBER 21
------------------	------------------------	-------------------	--------------------	--------------------

CONTRACT NO. 60K48



DIAPHRAGM D1, D2 & D5
 D1 (2 Required)
 D2 (2 Required)
 D5 (2 Required)

BEAMS ① - ⑫ 30 WF 124
 - ALL DIAPHRAGMS 16 WF 36

PLAN

SH. 2 OF 3

ILLINOIS DEPARTMENT OF
 TRANSPORTATION
 EXISTING BRIDGE PLAN
 LOCATION 3: SN 016-0545
 LAKE AVE. OVER I-94