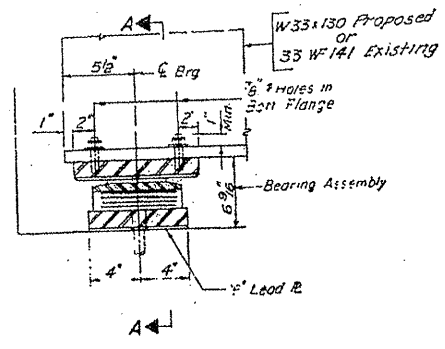
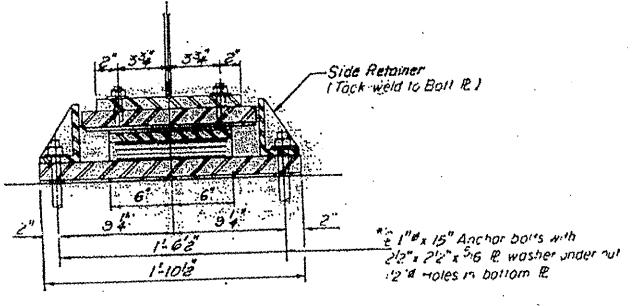


ROUTE VARIOUS	SECTION 2010-023 BP	COUNTY VARIOUS	TOTAL SHEETS 93	SHEET NUMBER 29
------------------	------------------------	-------------------	--------------------	--------------------

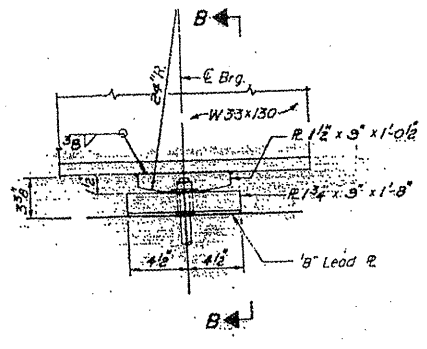
CONTRACT NO. 60K48



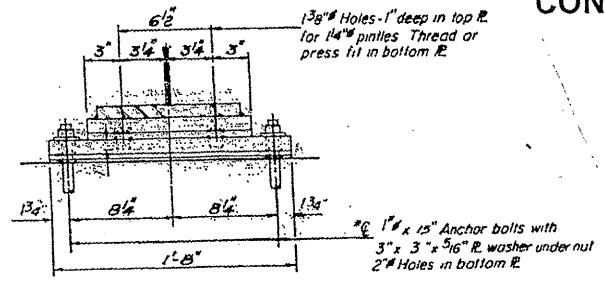
SECTION AT ABUT.



SECTION A-A

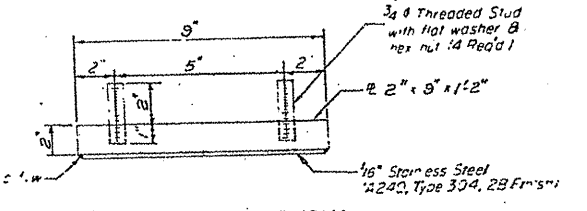


ELEVATION AT PIER

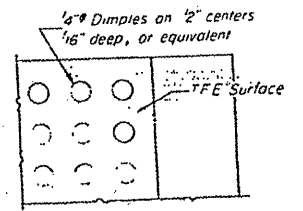


SECTION B-B

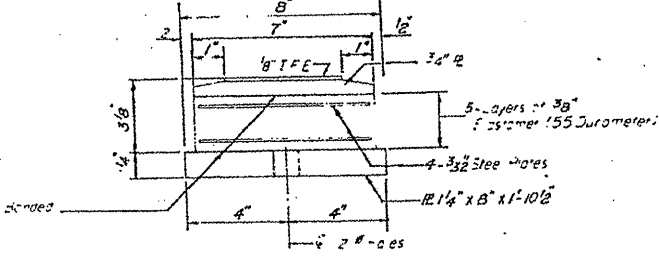
**TYPE II TFE ELASTOMERIC EXP BRG.**  
(ABUTMENTS "A" & "E")



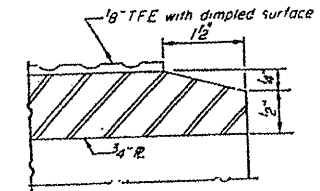
TOP BEARING ASSEMBLY



PLAN-TFE SURFACE

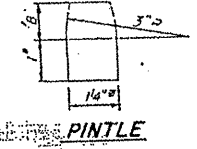


BOTTOM BEARING ASSEMBLY



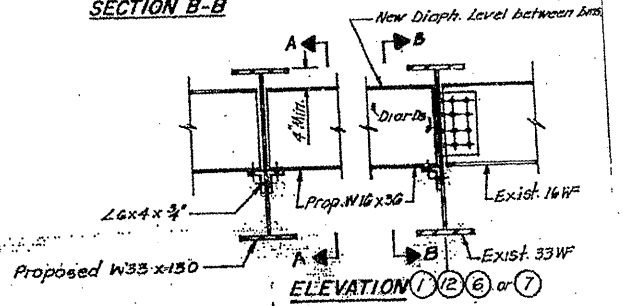
SECTION THRU TFE

Note: After girders have been erected holes at expansion bearings shall be drilled and anchor bolts grouted in place. Anchor bolts at fixed bearings may be drilled into the masonry. See sheet No. 22 for Anchor Bolt installation details.

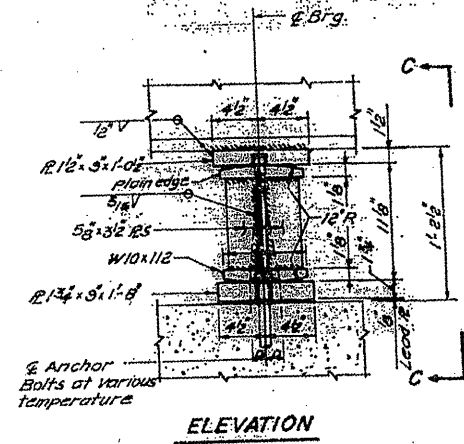


PINTLE

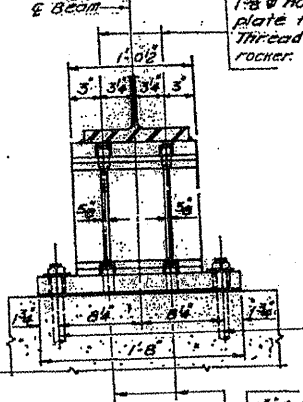
**FIXED BEARING (AT PIER "C")**  
(4-Required)



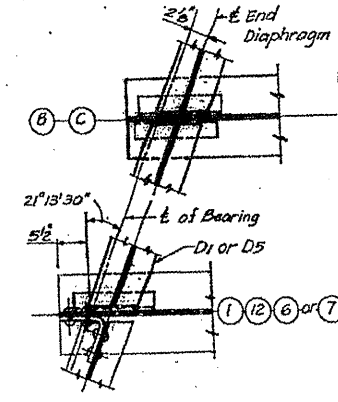
ELEVATION (1)(2)(6) or (7)



ELEVATION

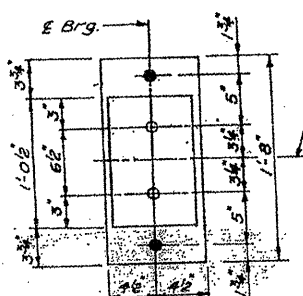


VIEW C-C



PLAN

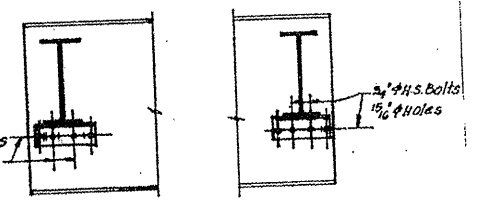
Note: The 1/8" TFE sheet shall be bonded directly to the top steel plate with a two-component, medium viscosity epoxy resin, conforming to the requirements of the Federal Specification MMM-A-134, Type 1. The bond agent shall be applied on the full area of the contact surfaces. Bonding of 1/8" TFE sheet during vulcanizing process will be permitted and the process and method of adjusting assembly height is approved by the Engineer.



PLAN

\*\* Remove existing bearing including top plate welded to the beam. Grind 1/4" continuous fillet weld smooth after removing top plate. Anchor bolts to be left in place & out flush with surface. The contractor shall submit the jacking detail of existing stringers and the sequence of operations for an approval by the Engineer. Minimum Jacking Force = 10T/Beam.

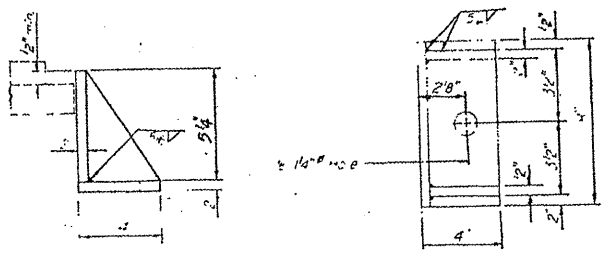
**EXPANSION BEARING (AT PIER "B" & "D")**  
(8-Required)



SECTION A-A

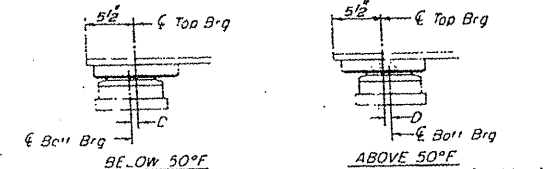
SECTION B-B

END DIAPHRAGMS  
D1 (4-Req'd), D2 (4-Req'd), D5 (2-Req'd)



SIDE RETAINER

(Equivalent rolled angle with stiffeners will be allowed in lieu of welded plates)



SETTING ANCHOR BOLTS AT EXP BRG.

D = 1/8" for each 100° of expansion for every 15° temp change from the normal temp at 50°F.

**ILLINOIS DEPARTMENT OF TRANSPORTATION**

**EXISTING BRIDGE PLAN**

LOCATION 5: SN 016-0943  
IL 58 (DEMPSTER ST.) OVER I-94