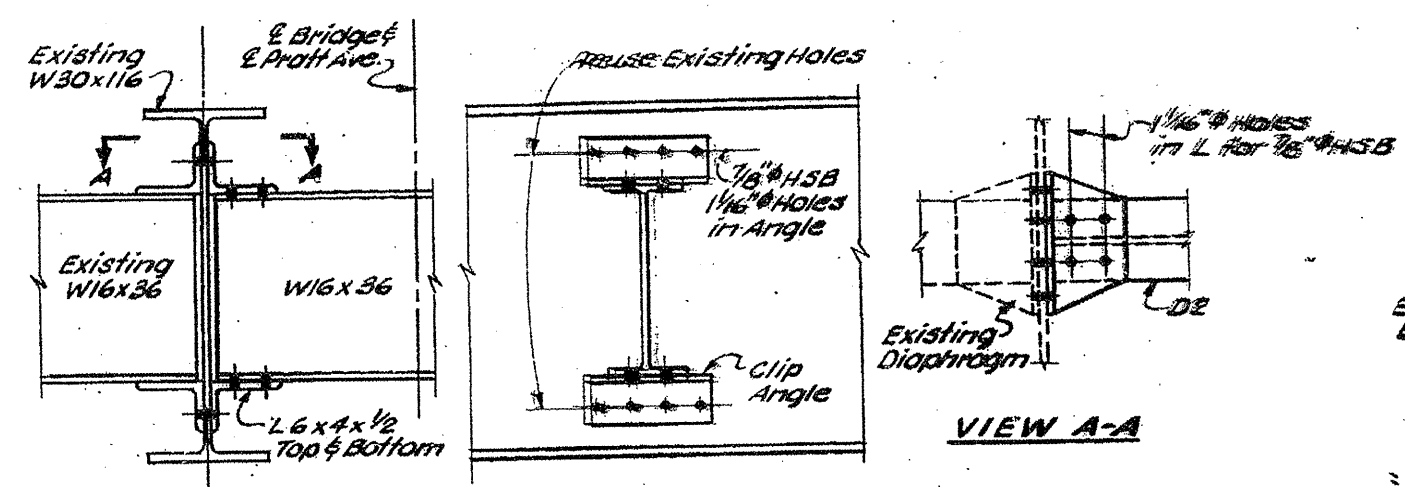


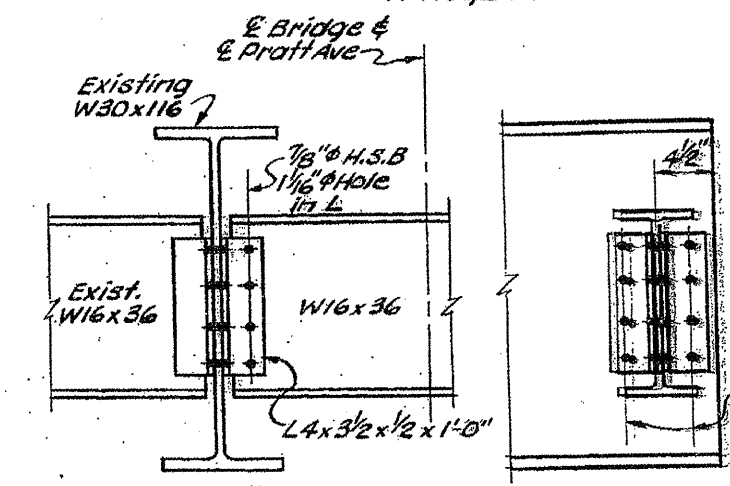
ROUTE	SECTION	COUNTY	TOTAL SHEETS	SHEET NUMBER
VARIOUS	2010-023 BP	VARIOUS	93	32

CONTRACT NO. 60K48

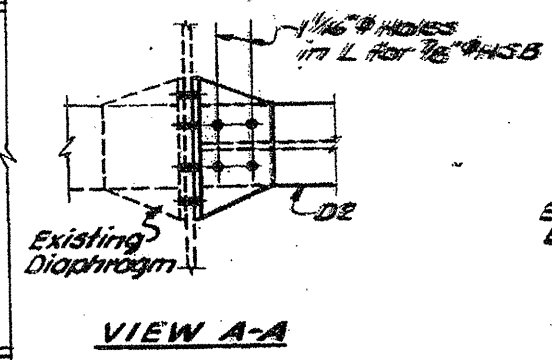


DIAPHRAGM D2
11 Required

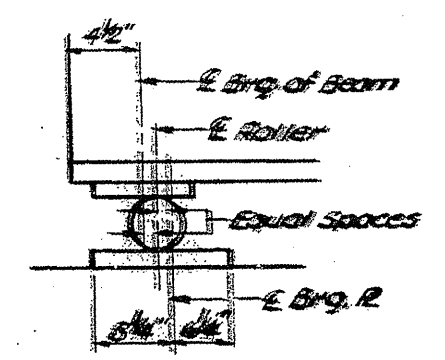
Note: Hardened washers shall be used over 1 1/8\"/>



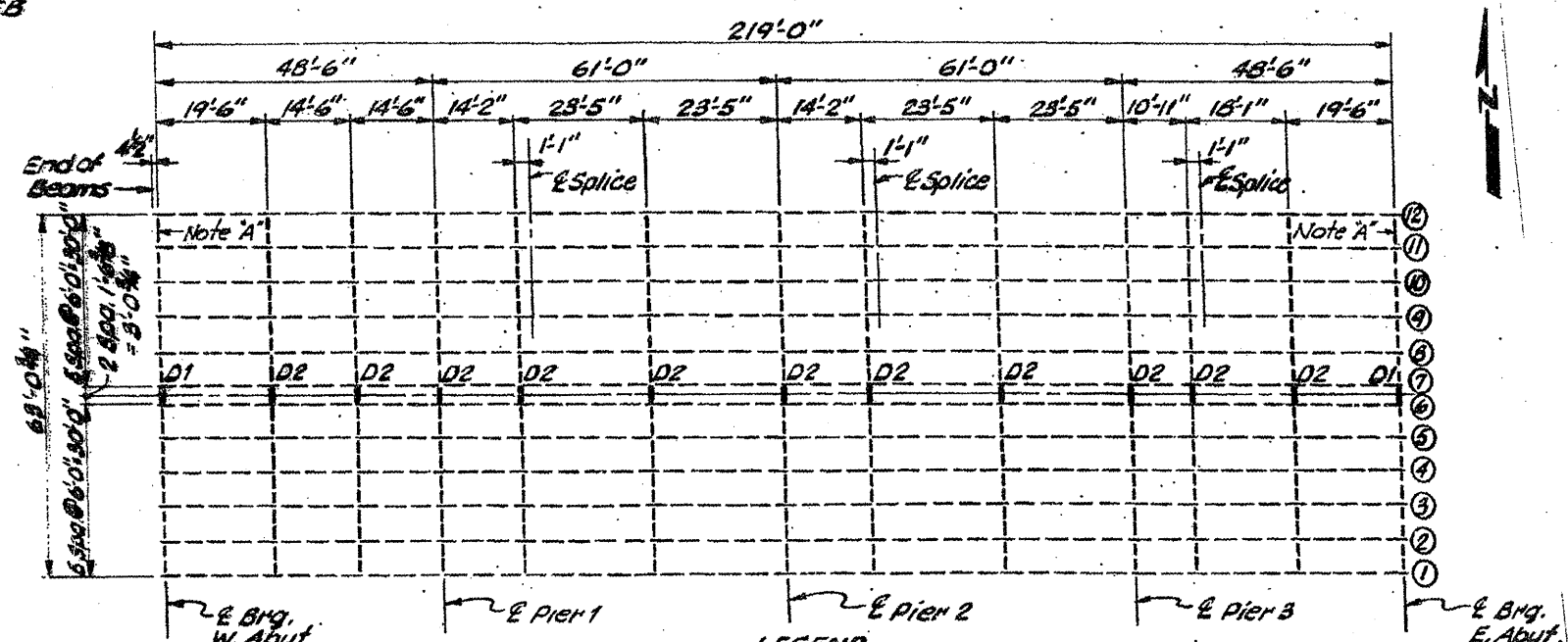
DIAPHRAGM D1
2 Required



VIEW A-A



DETAIL FOR SETTING ROLLERS
(Shown for temperature of erection above 50°F)



LEGEND
 - - - New Member (Diaphragms D1 & D2) or exist. member repositioned
 — Existing Member to remain
FRAMING PLAN

ILLINOIS DEPARTMENT OF
TRANSPORTATION

EXISTING BRIDGE PLAN

LOCATION 6: SN 016-0831
PRATT AVE. OVER I-94