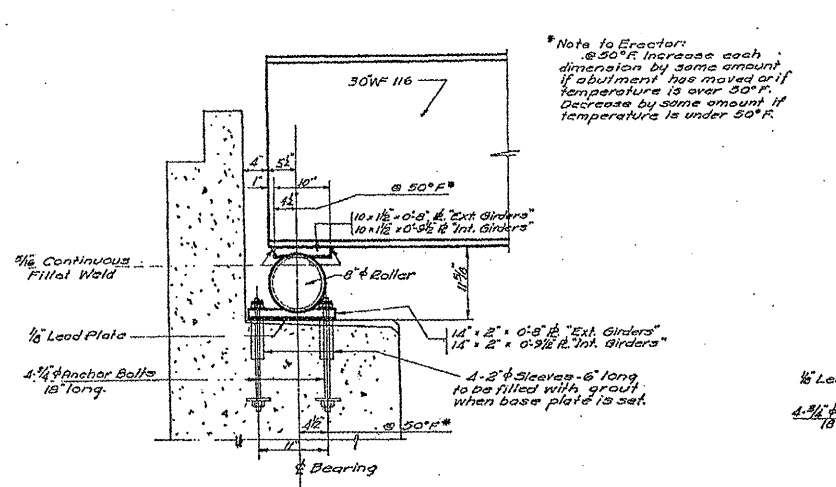
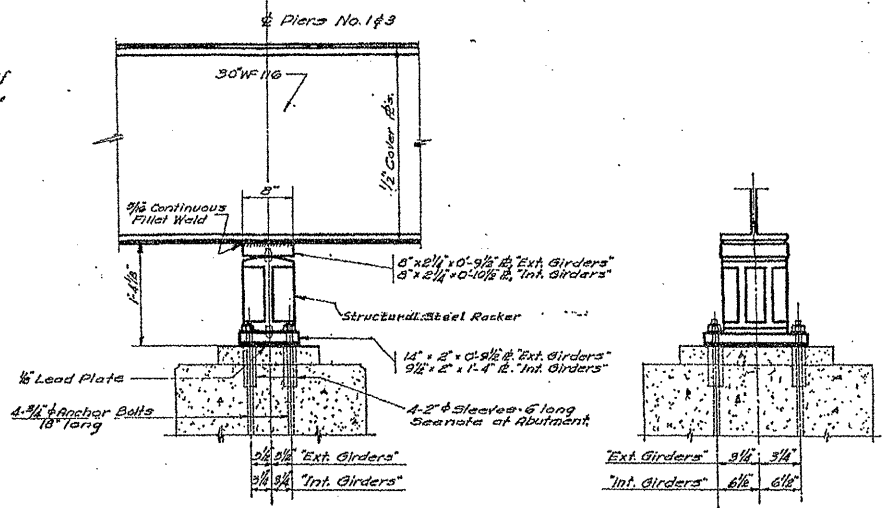


ROUTE VARIOUS	SECTION 2010-023 BP	COUNTY VARIOUS	TOTAL SHEETS 93	SHEET NUMBER 36
------------------	------------------------	-------------------	--------------------	--------------------

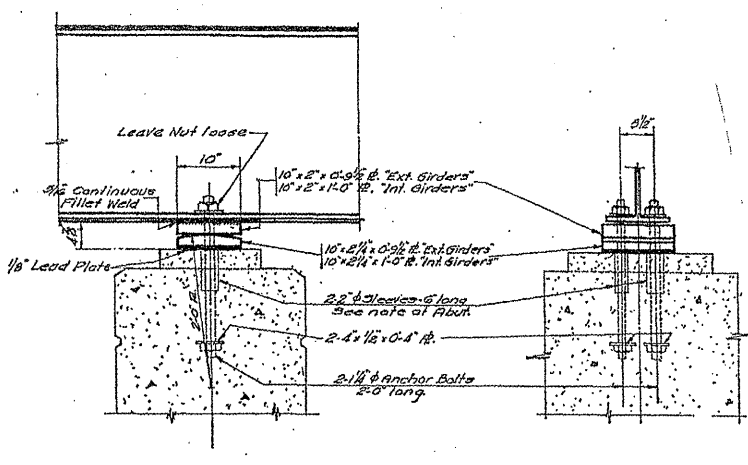
CONTRACT NO. 60K48



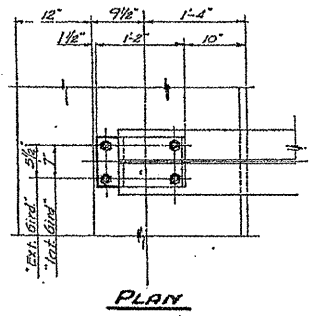
SECTION THRU ABUTMENT
Scale 1"=1'-0"



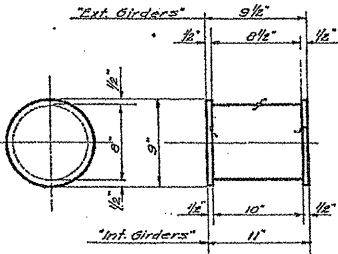
SECTION THRU PIERS No. 1&3
Scale 1"=1'-0"



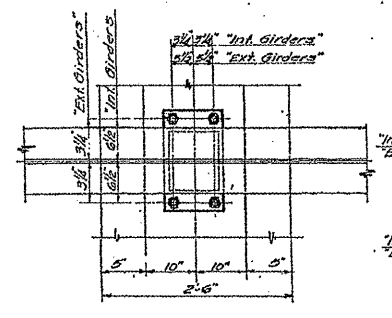
SECTION THRU PIER No. 2
Scale 1"=1'-0"



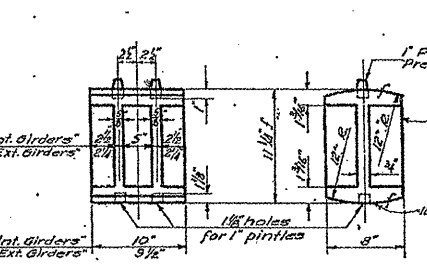
PLAN



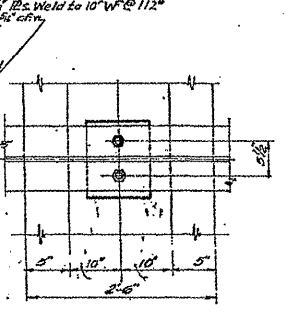
DETAIL OF ROLLERS
Scale: 1/2"=1'-0"
20-Req'd. Int. Girders - Wt. 3966 lbs.
4-Req'd. Ext. Girders - Wt. 688 lbs.



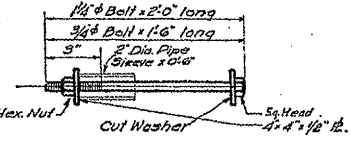
PLAN



DETAIL OF STRUCTURAL STEEL ROCKERS AT PIERS No. 1&3
Scale: 1/2"=1'-0"
20-Req'd. Int. Girders - Wt. 2416 lbs.
4-Req'd. Ext. Girders - Wt. 462 lbs.



PLAN

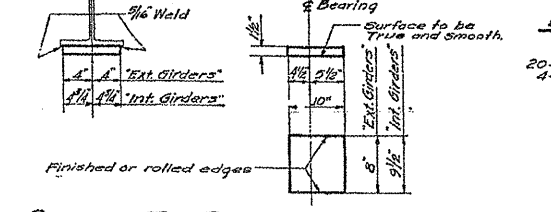


DETAIL OF ANCHOR BOLTS

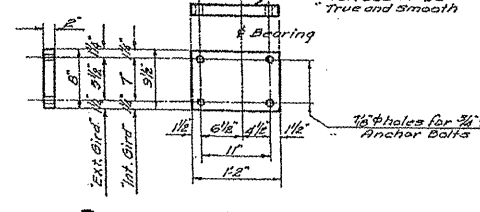
- 1 1/2" - 2 1/2" Req'd. Wt. 226 lbs.
- 3/4" - 1 1/2" - 478
- 1/2" - 2 1/2" - 490
- Cut Washers - 28
- 2" Pipe Sleeves - 594

NOTES:
Rollers shall be turned down from a solid bar for all plates in contact with the rollers. The edges adjacent to the rollers shall be rolled edges.
Estimated weights of rollers, steel plates, lead plates and anchor bolts are included in the Weight of Structural Steel.

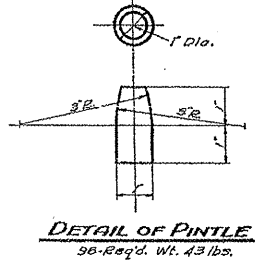
All rollers, rockers, bearing lvs., lead lvs. and anchor bolts shall be furnished, painted & set in accordance with Art. 54.3 (d) of the Std. Specs.
Total Weight Structural Steel on this sheet 17,250 lbs.



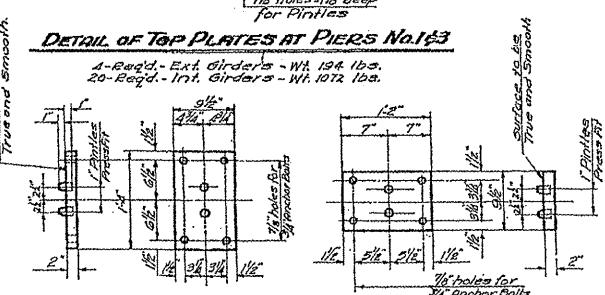
DETAIL OF TOP PLATE AT ABUTMENTS
4-Req'd. Ext. Girders - Wt. 136 lbs.
20-Req'd. Int. - Wt. 800 lbs.



DETAIL OF BOTTOM PLATE AT ABUTMENTS
4-Req'd. Ext. Girders - Wt. 277 lbs.
20-Req'd. Int. - Wt. 1844 lbs.
Includes Lead Plates



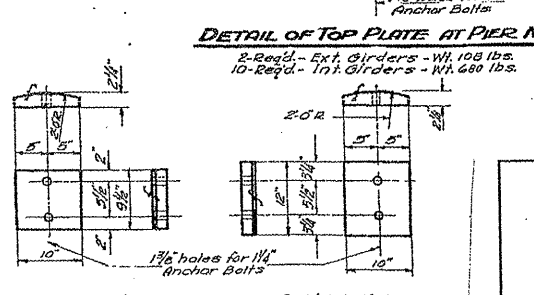
DETAIL OF PINTLE
36-Req'd. Wt. 43 lbs.



DETAIL OF TOP PLATES AT PIERS No. 1&3
4-Req'd. Ext. Girders - Wt. 194 lbs.
20-Req'd. Int. Girders - Wt. 1072 lbs.

20-Req'd. Int. Girders - Wt. 1895 lbs. 4-Req'd. Ext. Girders - Wt. 329 lbs.
Includes Lead Plates

DETAIL OF BOTTOM PLATES AT PIERS No. 1&3



DETAIL OF TOP PLATE AT PIER No. 2
2-Req'd. Ext. Girders - Wt. 108 lbs.
10-Req'd. Int. Girders - Wt. 600 lbs.

2-Req'd. Ext. Girders - Wt. 130 lbs. 10-Req'd. Int. Girders - Wt. 826 lbs.
Includes Lead Plates

DETAIL OF BOTTOM PLATE AT PIER No. 2

ILLINOIS DEPARTMENT OF
TRANSPORTATION

EXISTING BRIDGE PLAN

LOCATION 6: SN 016-0831
PRATT AVE. OVER I-94

SH. 7 of 7