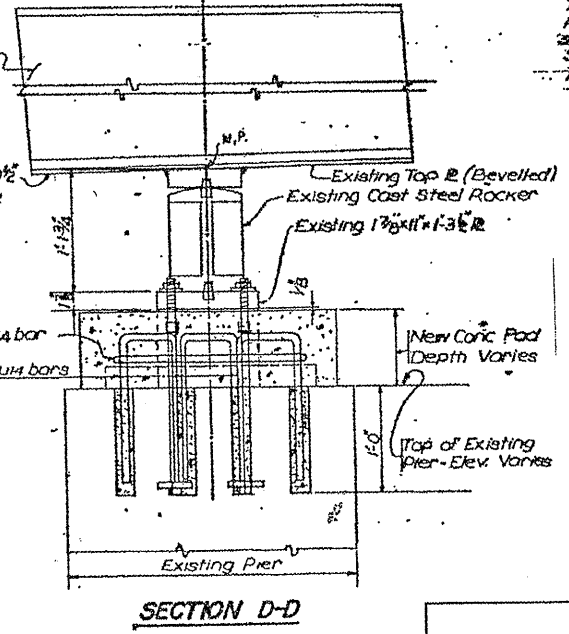
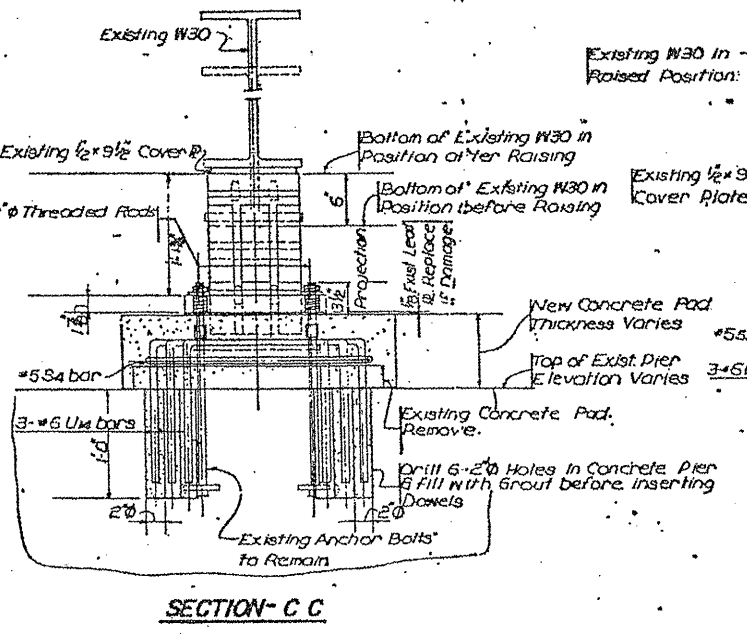
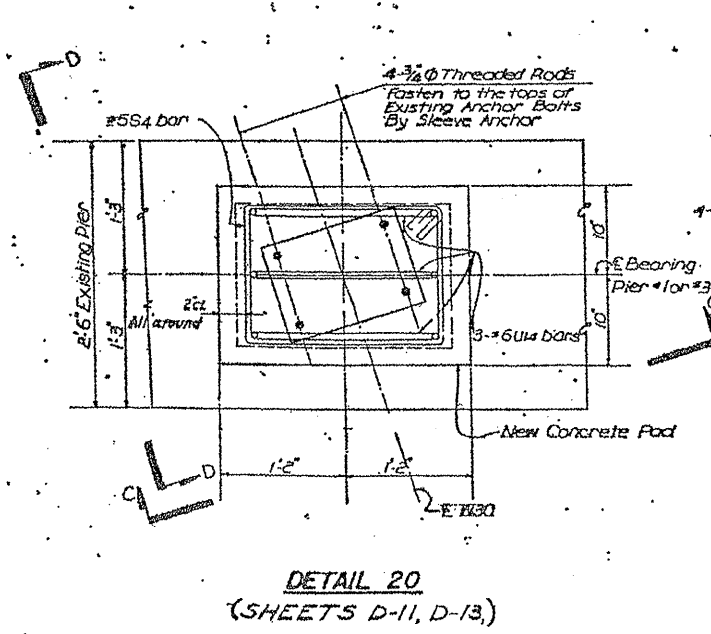
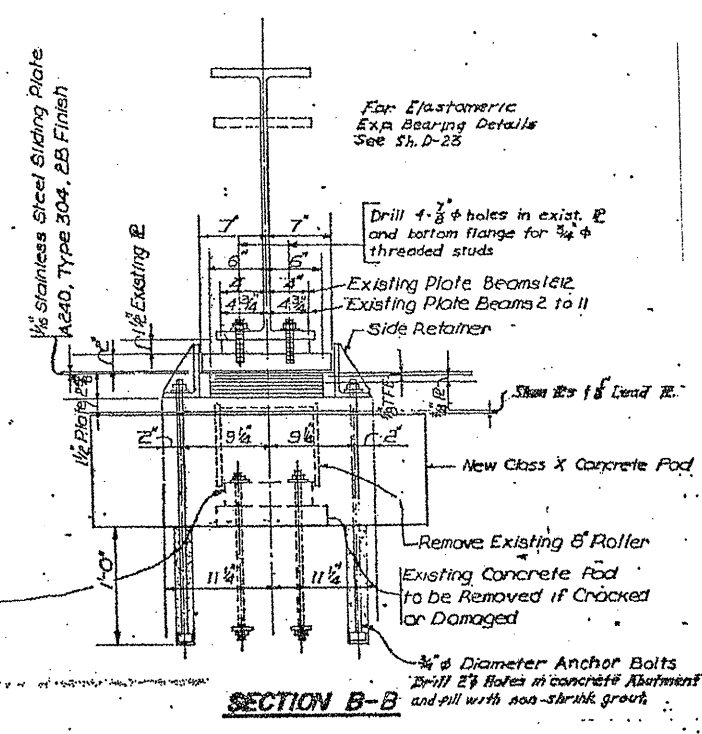
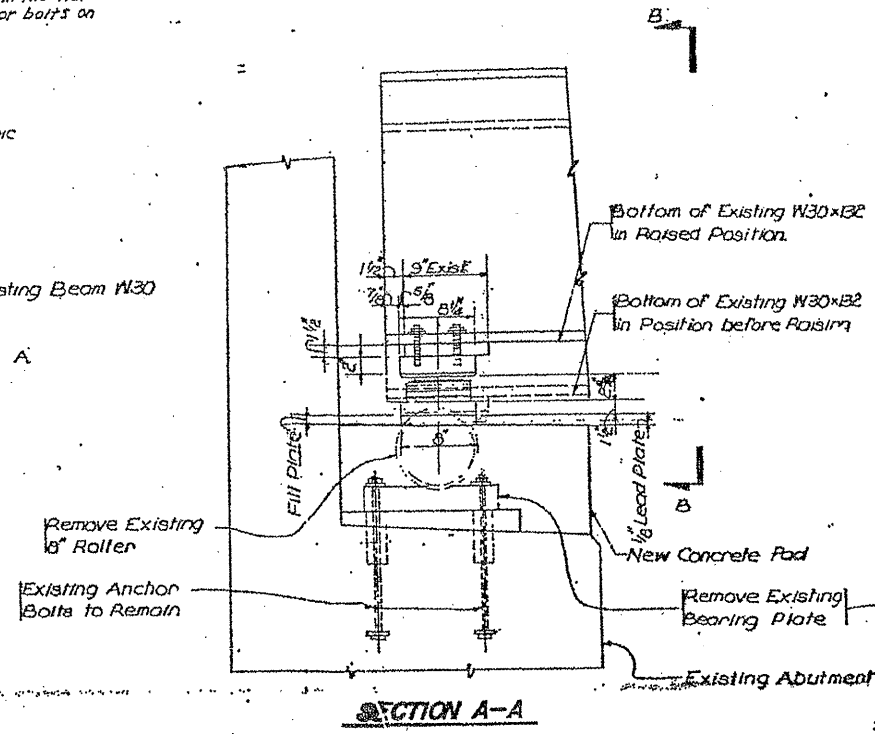
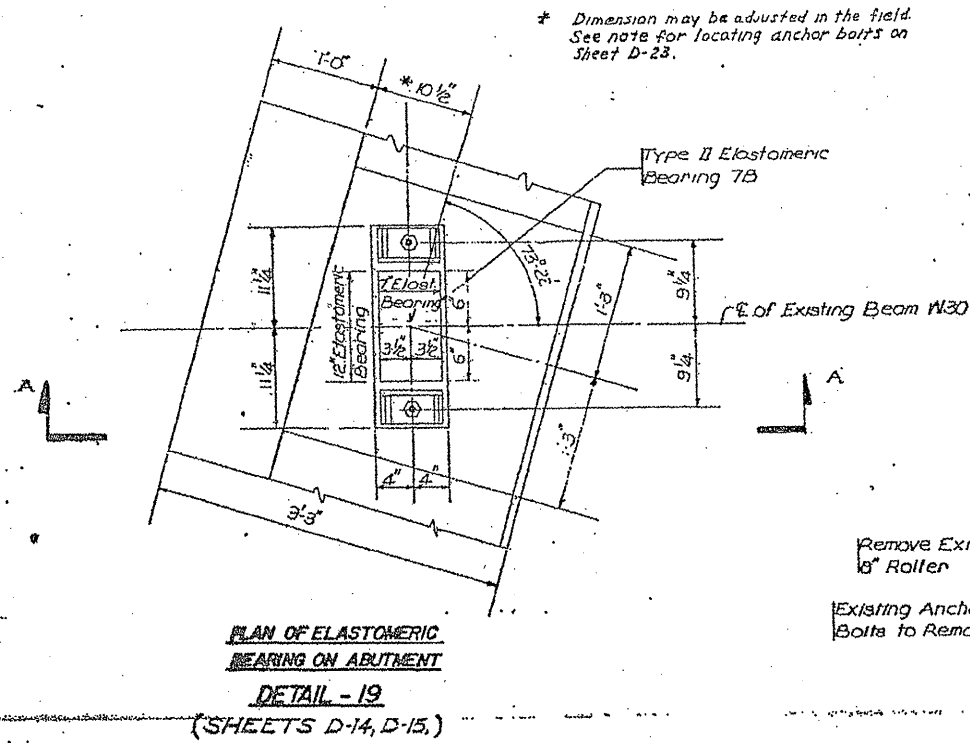


ROUTE	SECTION	COUNTY	TOTAL SHEETS	SHEET NUMBER
VARIOUS	2010-023 BP	VARIOUS	93	42

CONTRACT NO. 60K48



Notes:
For Dead and Live Load REACTIONS on Abutment and Pier Bearings See Sh. D-7.
See general notes on Sheet D-3 for shim Plate Requirement under bearing assemblies.

ILLINOIS DEPARTMENT OF
TRANSPORTATION

EXISTING BRIDGE PLAN

LOCATION 7: SN 016-0834
DEVON AVE. OVER I-94

SH. 6 of 6