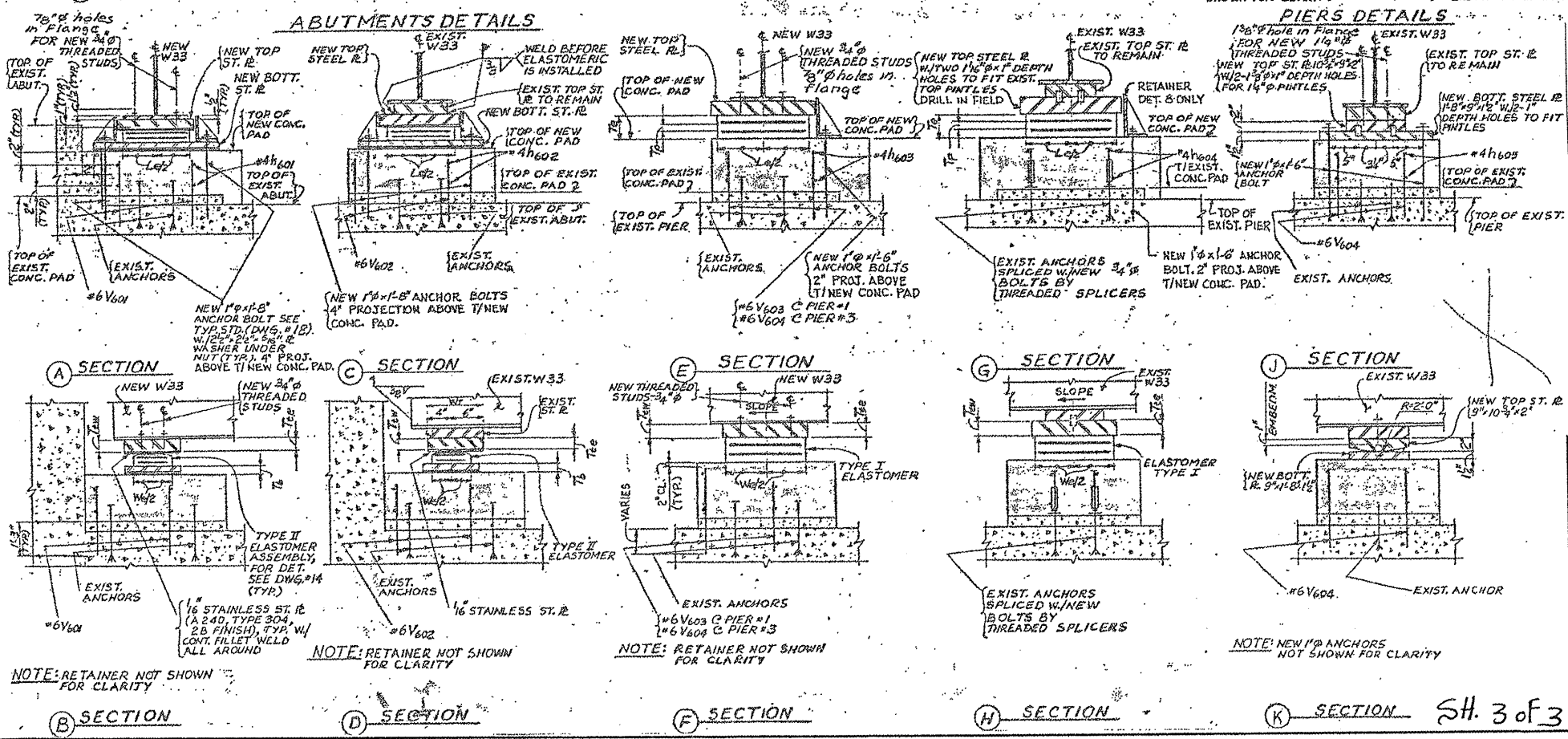
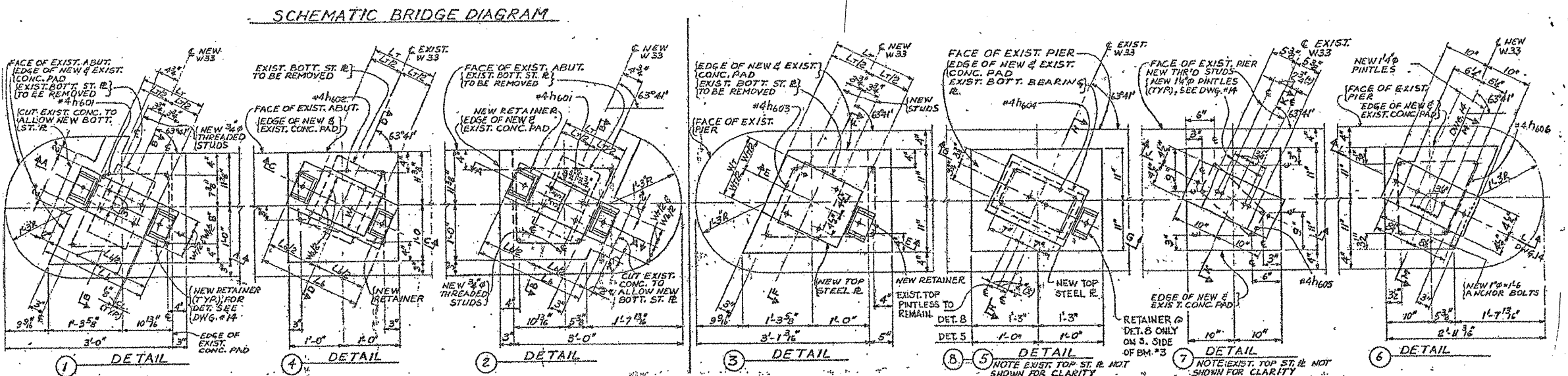
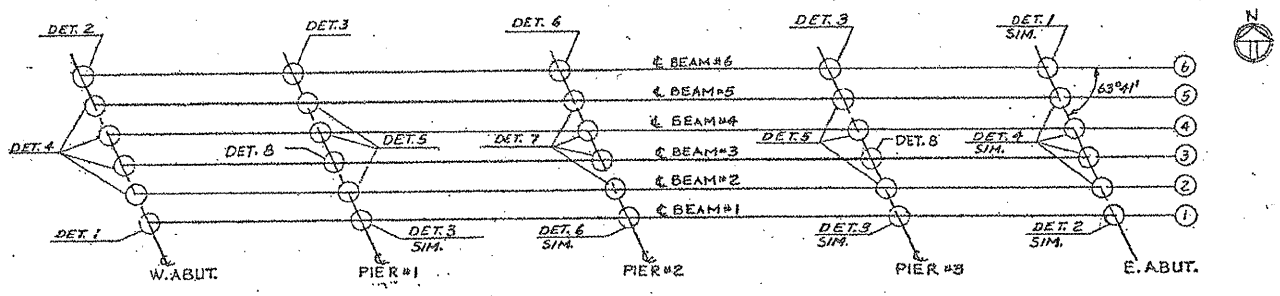


ROUTE VARIOUS	SECTION 2010-023 BP	COUNTY VARIOUS	TOTAL SHEETS 93	SHEET NUMBER 53
------------------	------------------------	-------------------	--------------------	--------------------

CONTRACT NO. 60K48



ILLINOIS DEPARTMENT OF
TRANSPORTATION

EXISTING BRIDGE PLAN

LOCATION 10: SN 016-0815
TOWER RD. OVER I-94

SH. 3 OF 3