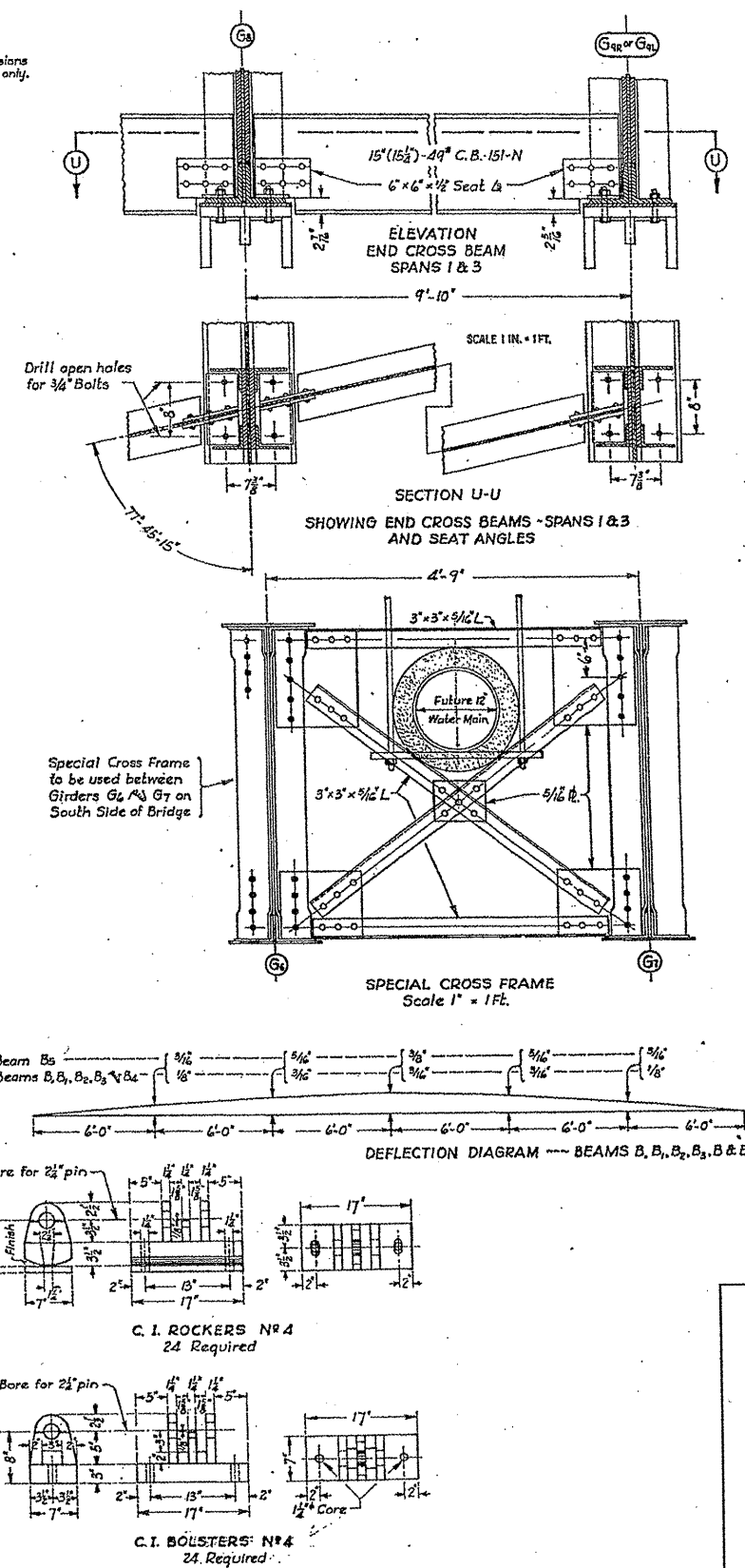
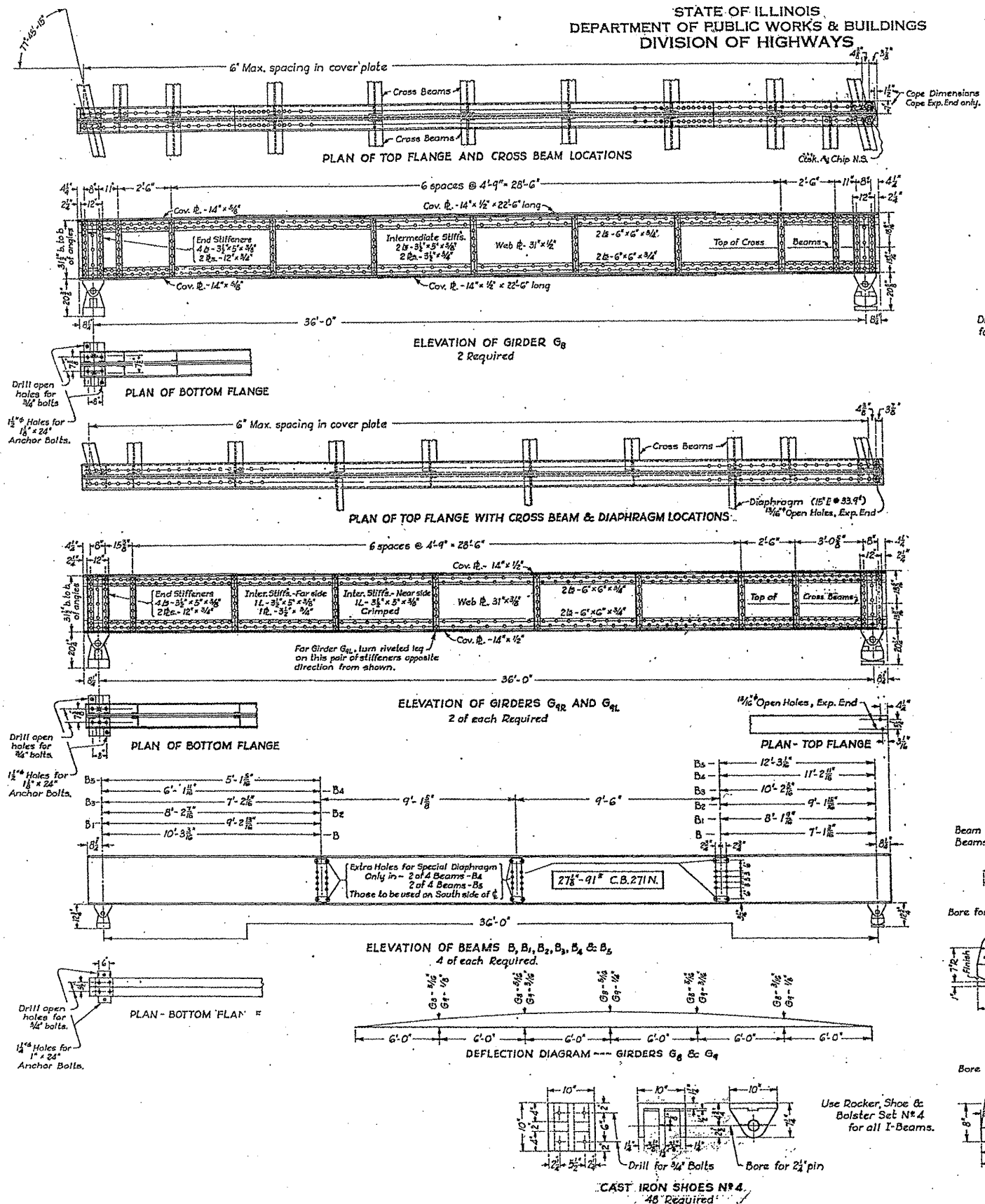


ROUTE VARIOUS	SECTION 2010-023 BP	COUNTY VARIOUS	TOTAL SHEETS 93	SHEET NUMBER 63
------------------	------------------------	-------------------	-----------------------	-----------------------

CONTRACT NO. 60K48

STATE OF ILLINOIS
DEPARTMENT OF PUBLIC WORKS & BUILDINGS
DIVISION OF HIGHWAYS



ILLINOIS DEPARTMENT OF
TRANSPORTATION
EXISTING BRIDGE PLAN
LOCATION 13: SN 016-0367
PETERSON AVE. OVER NORTH SHORE CHANNEL

SH. 2 of 15