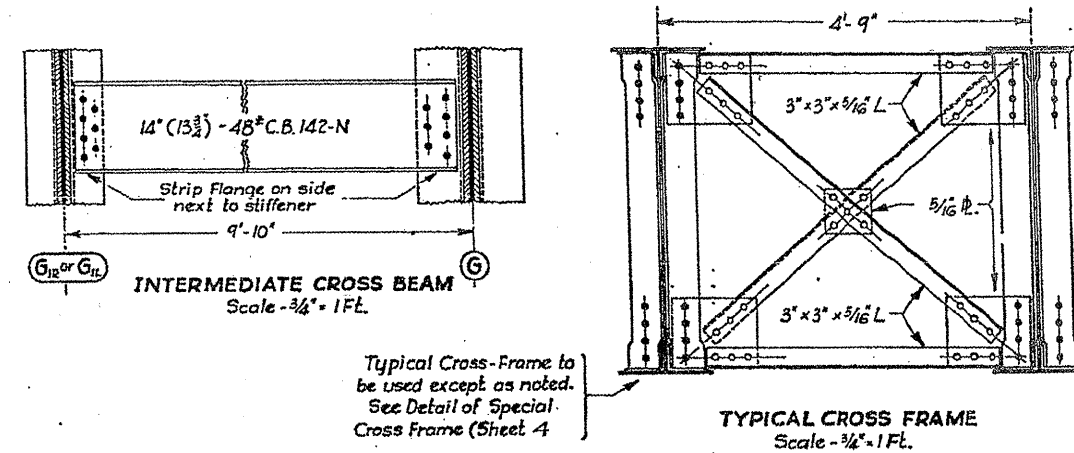
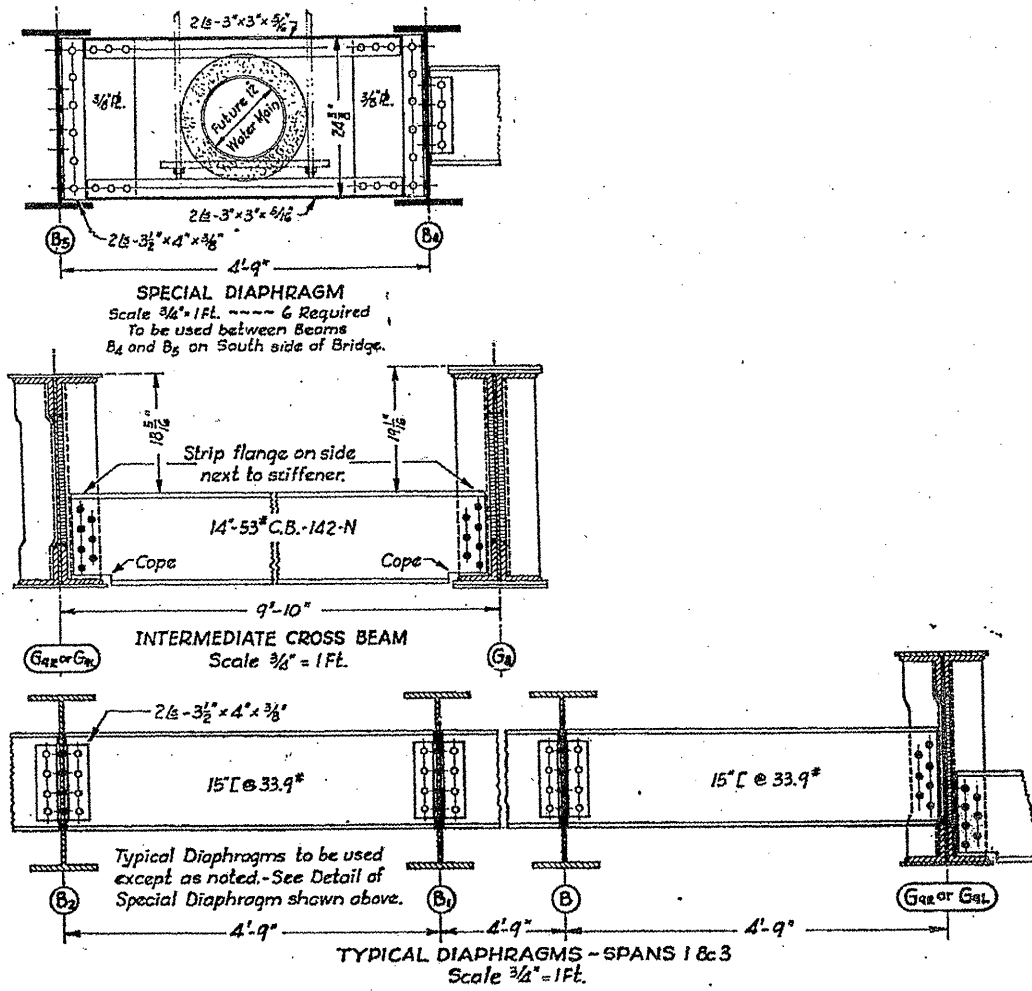


ROUTE	SECTION	COUNTY	TOTAL SHEETS	SHEET NUMBER
VARIOUS	2010-023 BP	VARIOUS	93	64

CONTRACT NO. 60K48



ILLINOIS DEPARTMENT OF
TRANSPORTATION

EXISTING BRIDGE PLAN

LOCATION 13: SN 016-0367
PETERSON AVE. OVER NORTH SHORE CHANNEL

SH 3 of 15