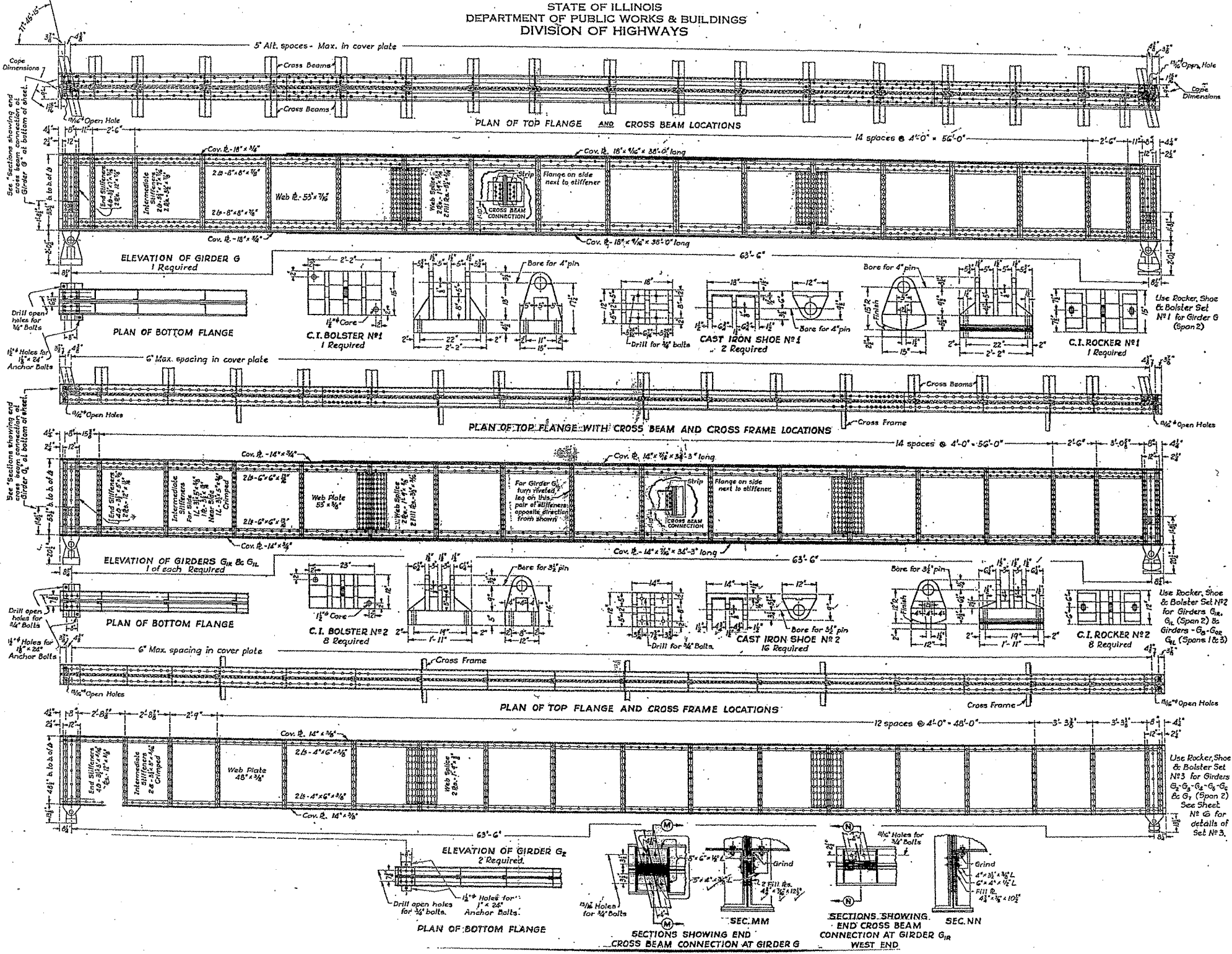


ROUTE VARIOUS	SECTION 2010-023 BP	COUNTY VARIOUS	TOTAL SHEETS 93	SHEET NUMBER 65
------------------	------------------------	-------------------	--------------------	--------------------

CONTRACT NO. 60K48

STATE OF ILLINOIS  
DEPARTMENT OF PUBLIC WORKS & BUILDINGS  
DIVISION OF HIGHWAYS



ILLINOIS DEPARTMENT OF  
TRANSPORTATION

EXISTING BRIDGE PLAN

LOCATION 13: SN 016-0367  
PETERSON AVE. OVER NORTH SHORE CHANNEL

SH. 4 of 15