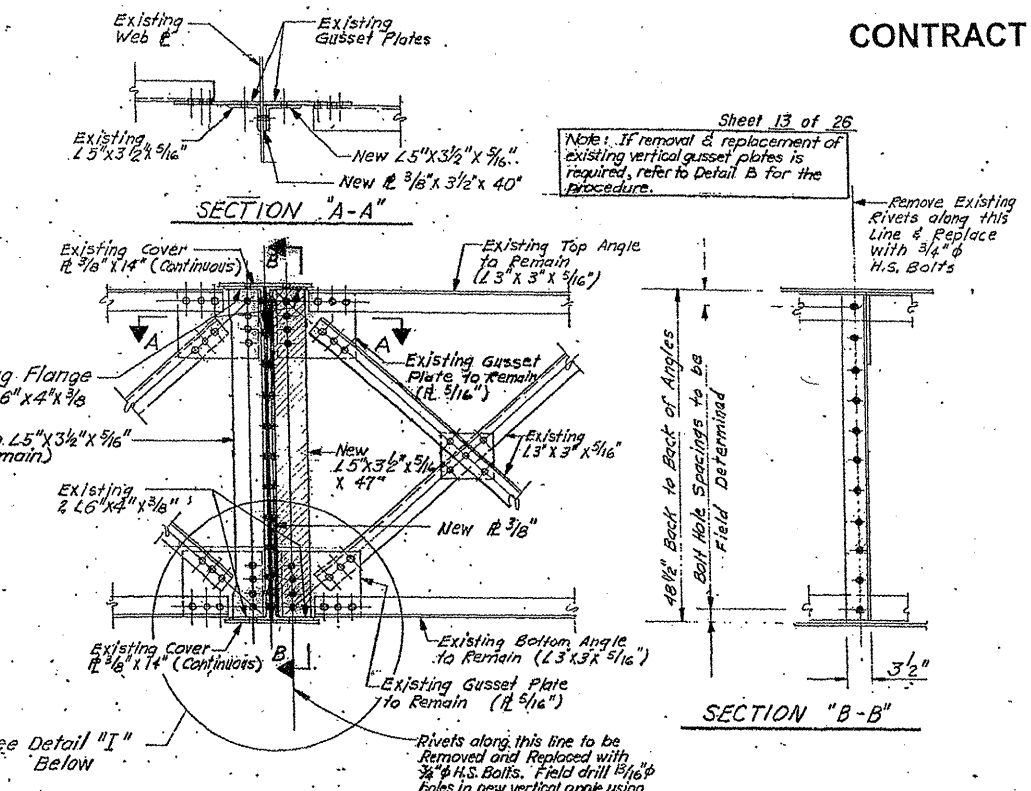
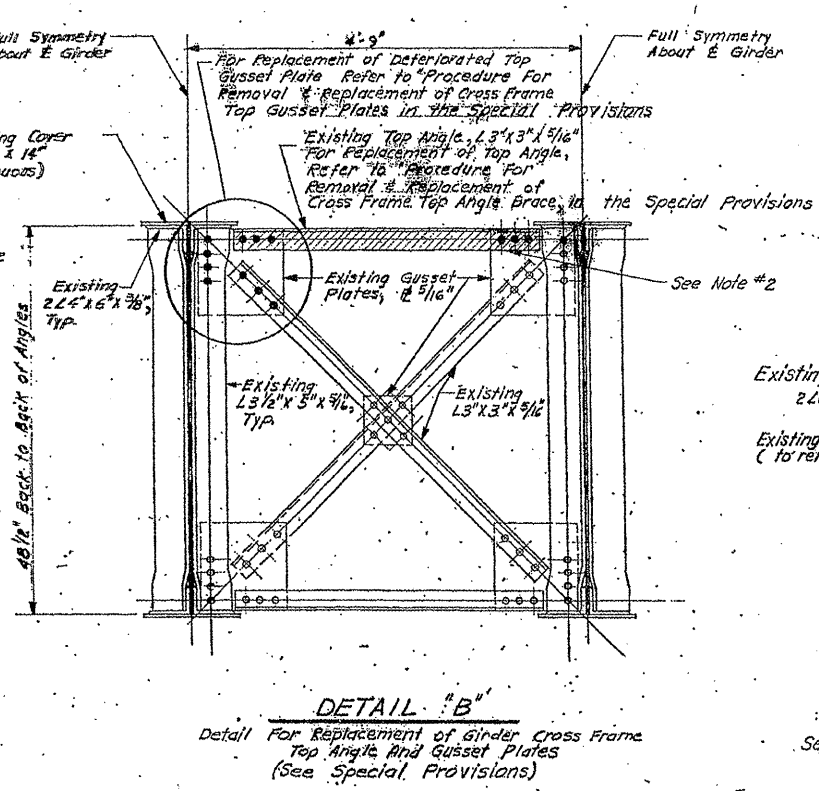
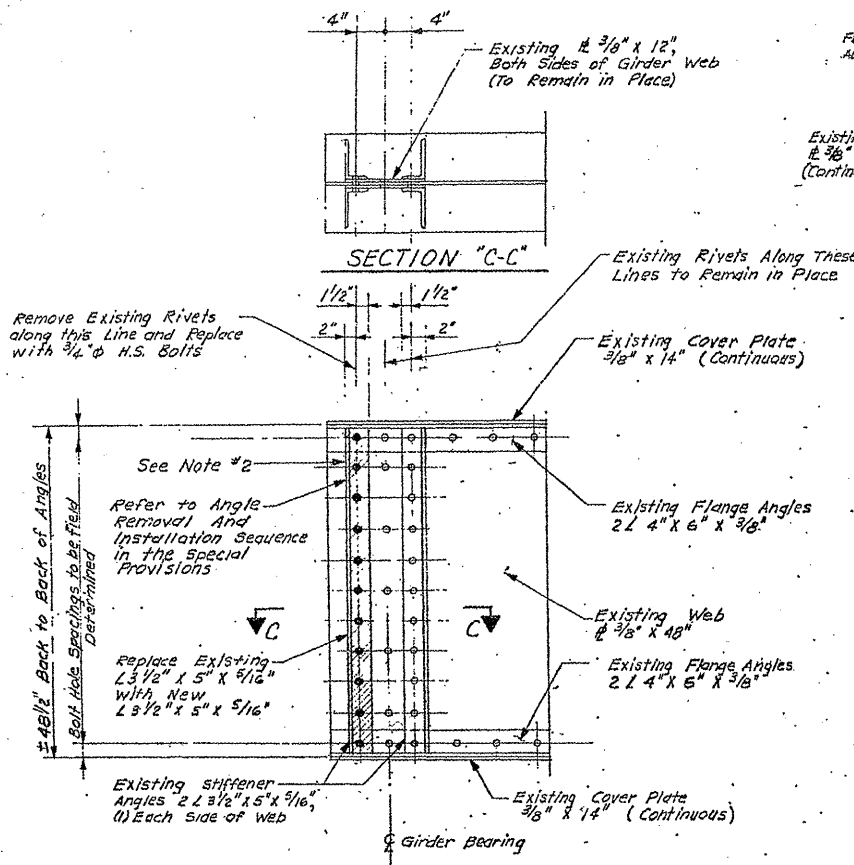


ROUTE	SECTION	COUNTY	TOTAL SHEETS	SHEET NUMBER
VARIOUS	2010-023 BP	VARIOUS	93	70

CONTRACT NO. 60K48



Sheet 13 of 26

Note: If removal & replacement of existing vertical gusset plates is required, refer to Detail B for the procedure.

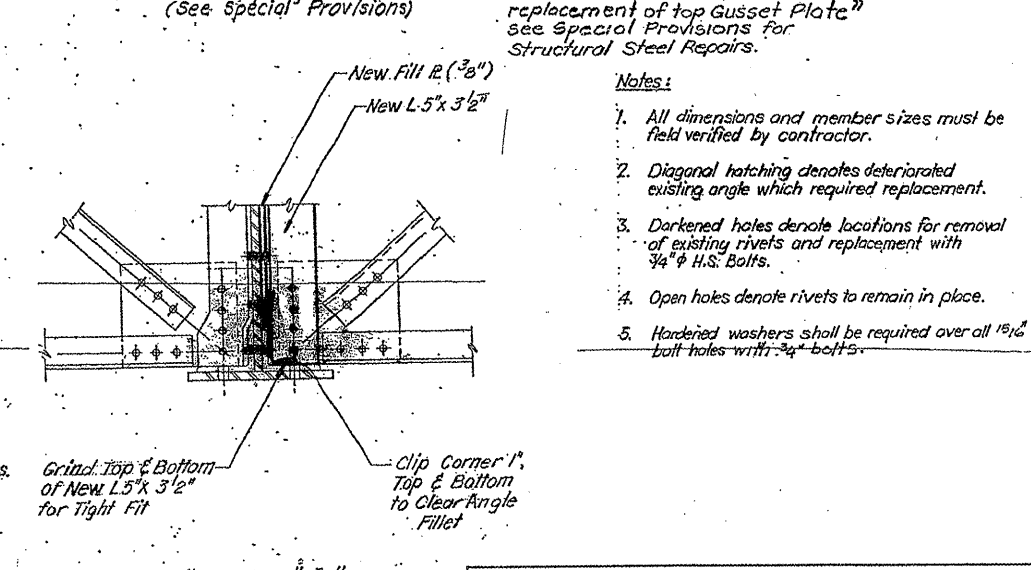
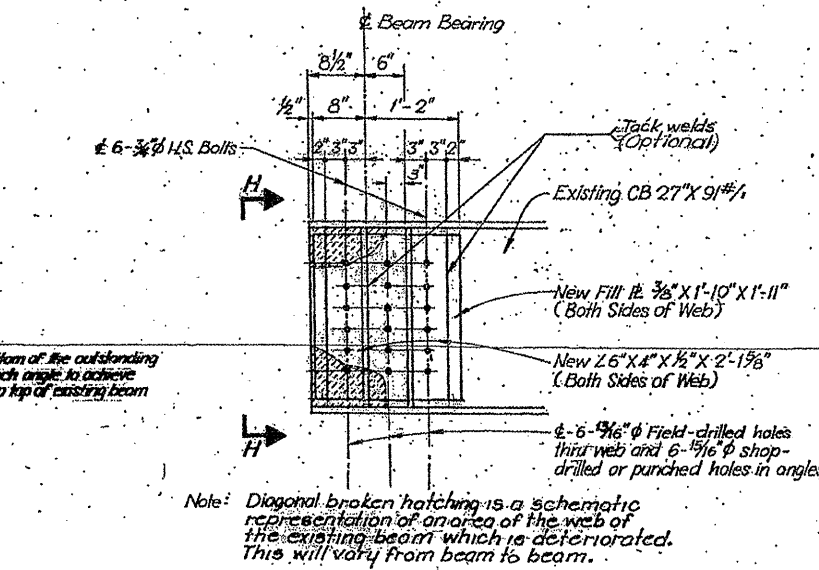
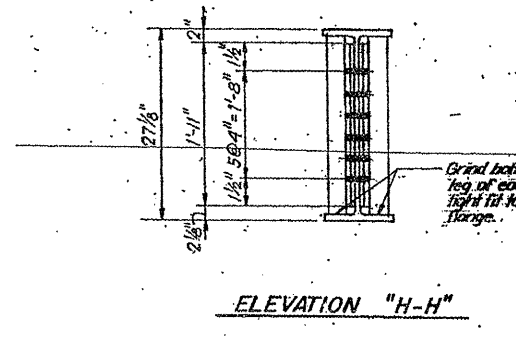
Remove Existing Rivets along this Line & Replace with 3/4" H.S. Bolts

48 1/2" Back to Back of Angles
 Bolt Hole Spacings to be Field Determined

3 1/2"

Notes:

- All dimensions and member sizes must be field verified by contractor.
- Diagonal hatching denotes deteriorated existing angle which required replacement.
- Darkened holes denote locations for removal of existing rivets and replacement with 3/4" H.S. Bolts.
- Open holes denote rivets to remain in place.
- Hardened washers shall be required over all 1 1/2" & bolt holes with 3/4" bolts.



ILLINOIS DEPARTMENT OF TRANSPORTATION
 EXISTING BRIDGE PLAN
 LOCATION 13: SN 016-0367
 PETERSON AVE. OVER NORTH SHORE CHANNEL

SH. 9 of 15